

TEXAS A&M UNIVERSITY-KINGSVILLE®

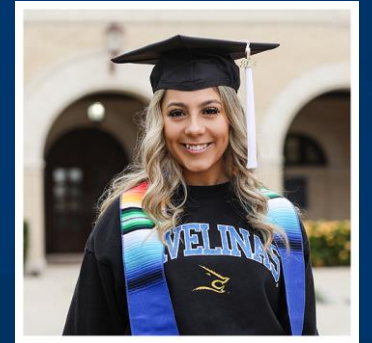


Dr. Rosalind Alderman
Vice President
of
Enrollment Management





Ariana De La Garza
Miss Texas A&M University-
Kingsville



TEXAS A&M UNIVERSITY-KINGSVILLE®

Agenda

Texas A&M University-Kingsville®

HOGGIE DAYS SCHEDULE

MAY 20, 2025

Student and Family Tracks

STUDENTS AND FAMILIES ARE TOGETHER DURING THIS TIME

MORNING SESSION SCHEDULE

8 - 9 A.M. Music Education Complex (MUEB) Lobby	Check-in
9 - 10:15 A.M. Performance Hall	Welcome & Key Services

STUDENTS AND FAMILIES SEPARATE DURING THIS TIME

STUDENT TRACK SCHEDULE

10:30 - Noon Campus Wide	Academic Sessions and Campus Tours
Noon - 12:45 P.M. Jones Auditorium Music Room 160 Music Patio	Blue Group - Lunch Gold Group - Academic Advising Javelina Group - Organization Fair
12:45 - 1:30 P.M. Music Room 160 Music Patio Jones Auditorium	Blue Group - Academic Advising Gold Group - Organization Fair Javelina Group - Lunch
1:30 - 2:15 P.M. Music Patio Jones Auditorium Music Room 160	Blue Group - Organization Fair Gold Group - Lunch Javelina Group - Academic Advising
2:15 - 2:45 P.M. Performance Hall	TAMUK Talks

FAMILY TRACK SCHEDULE

10:30 - 10:45 A.M. Performance Hall	Student Panel
11 - 11:45 P.M. Blue Group Gold Group	Lunch - Javelina Dining Hall Break - On your own
11:45 - 12:30 P.M. Blue Group Gold Group	Break - On your own Lunch - Javelina Dining Hall
12:45 - 2 P.M. Peacock Auditorium	★ Afternoon Presentations
2 - 2:45 P.M. James C. Jernigan Library 1 st Floor	Resource Expo & Ice Cream

Residence Hall Tours are available from 3 - 5 P.M. Please visit the lobby of Lucio Hall, Lynch Hall, Martin Hall or Mesquite Village West.

Texas A&M University-Kingsville®

HOGGIE DAYS

STUDENT & FAMILY ACTIVITY DESCRIPTIONS

STUDENT TRACK ACTIVITIES

Welcome & Key Services

This opening session is your formal welcome to the Javelina Family! You'll hear from UPD, Office of Compliance, Registrar, Student Health and Wellness, Financial Aid and the Business Office.

Academic Sessions and Campus Tours

Your orientation leader will take you on a campus tour based on colleges.

Lunch

You'll be eating lunch with your orientation leaders. This is a great time to ask them about their college experience, and ask any questions you may have about TAMUK, Kingsville, or the transition to college!

Organization Fair

Take a walk around the student organization fair to explore what TAMUK has to offer!

TAMUK Talks

Learn about some of the departments around campus! You'll hear from the Student Success and Student Engagement and Campus Life.

Academic Advising

Meet with your academic advisor to plan out your next semester!

FAMILY TRACK ACTIVITIES

Welcome & Key Services

This opening session is your formal welcome to the Javelina Family! You'll hear from UPD, Office of Compliance, Registrar, Student Health and Wellness, Financial Aid and the Business Office.

Student Panel

Families will have the opportunity to chat with current TAMUK students to discuss their transition to college and learn about campus services.

Lunch

Lunch will be provided at the Javelina Dining Hall. Lunch is a buffet-style with a main entree, salad bar and desserts.

Break

This is a time to explore the campus and get any "to do's" done! Visit the Blue and Gold Central, Bookstore or take in the views of the campus.

★ Afternoon Presentations

Hear from Student Engagement and Campus Life, the Associate Dean of Academic Success, Library Resources, Housing, Dining and Student Health and Wellness. There is time to ask your questions at the end of each presentation!

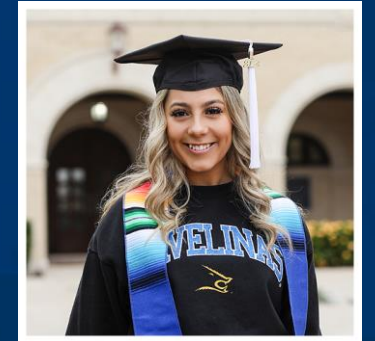
★ Resource Expo & Ice Cream

Cool down with ice cream and walk through our resource expo for your chance to speak directly with departments such as UPD, Veterans Affairs, Career Engagement and more!



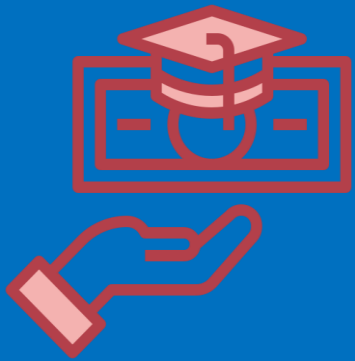
QUESTIONS?

Text us at 361.600.4929.



TEXAS A&M UNIVERSITY-KINGSVILLE®

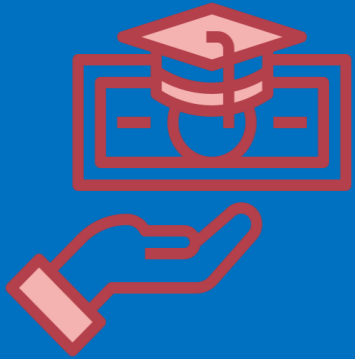
Financial Aid & Business Services



Presented by
**Financial
Aid
and
Student
Business
Services**

WELCOME

Polling question

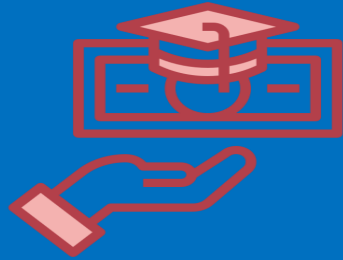


How much do you think full-time (12+hrs) college tuition costs?

1. \$0 - \$3000
2. \$3001 - \$5000
3. \$5001 - \$8000
4. \$8001 - \$11000



Let's Focus on the Process



Financial Aid

Complete
FAFSA/TASFA

Complete All
Requirements

Accept Aid



Registration

Meet Academic
Advisor

Register for classes



Student Business Services

Tuition Calculated

Financial Aid Applied
to Student Account

Balance to be paid by
payment deadline

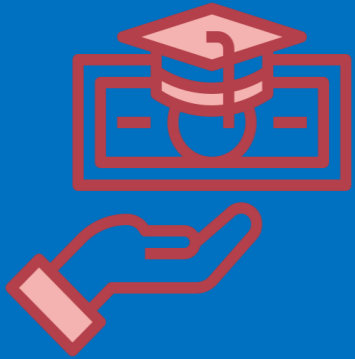


Student Refund

Process through
BankMobile

Refunds are not
immediate

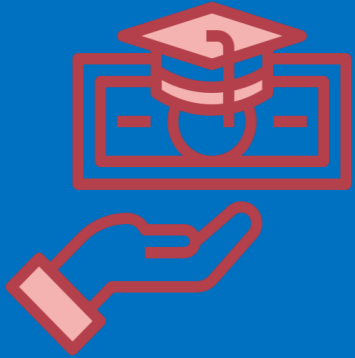
Polling question



Have you
completed
your FAFSA?
Yes or No



Financial Aid Key Points



Financial Aid

1. Types of Aid
2. Take note of Key Dates
3. Refer to Award Package
4. Outstanding Requirements
5. Student Loans



**Student Business
Services**

Interested in Enrolling in a Payment Plan?

****TIP****- if receiving aid, wait until aid pays out before enrolling into a plan!

15% plan- available if not in Housing

- Requires 15% of the entire balance as first installment down payment
- Setup fee of \$30
- Remaining balance is broken down into three varying % additional installments
- Late fee of \$50

25% plan- required if in Housing

- Requires 25% of entire balance as first installment down payment
- Set up fee of \$30
- Remaining balance broken down into three 25% additional installments
- Late fee of \$50

How Much Do I Need Per Semester?



Jack Javelina

Tuition and Fees	\$4,946
<u>Room and Food</u>	<u>\$5,745</u>
Current Balance:	\$10,691
<u>Gift Aid</u>	<u>-\$7,000</u>
Balance	\$3,691
Student Loans (if acpt'd)	<u>-\$2,227</u>
Estimated Balance	\$1,464



Student Refund

Direct Deposit

Check

BankMobile
Vibe Account



Now that Jack has a remaining balance, what are his options?

- 1.No need to worry about it
- 2.See if he can get more aid and wait for the decision
- 3.Get into a payment plan
- 4.Get into a payment plan
5. #3 or #4

How Much Do I Need Per Semester?



Student Refund

Jack Javelina

Tuition and Fees	\$4,946
Room and Food	\$5,745
Current Balance:	\$10,691
Gift Aid	-\$7,000
Balance	\$3,691
Student Loans (if acpt'd)	-\$2,227
Estimated Balance	\$1,464
25% down payment of	\$366**

**Due by payment deadline on August 13, 2025

Jill Javelina

Tuition and Fees	\$4,946
Room and Food	\$ 0
Current Balance:	\$4,946
Gift Aid	-\$5,000
Balance	-\$54
Student Loans (if acpt'd)	-\$2,227
Estimated Balance	-\$2,281*

*Set up BankMobile Preference

What Resources Can I Use to Pay for College?



**Student Business
Services**

Financial Aid

- Federal Aid – Processed through FAFSA application *studentaid.gov*
- Scholarships – Internal and External
 - *Tamuk.ScholarshipUniverse.com*

Student Business Services

- Payment Plans
 - Down payment and setup fee required
- Third-party Resources – *3rdparty@tamuk.edu*
 - Texas Tomorrow; VA benefits; College Savings Plans; Sponsorships

How Do I Get my Balance Paid?



Student Business Services

Balance changes can occur if

Step 1: Verify that all Financial Aid requirements are completed

Login into JNET and complete FA requirements

Getting loans? More steps to complete at studentaid.gov

Step 2: Aid applies on Aug. 11 After 5:00 PM- before payment deadline

Payment required by 8/13

Balance over \$500.00 = Drop for nonpayment on 8/15

Step 3: Does a balance remain?

Pay in full

Enroll into a payment plan

August 2025

Sunday	Monday	Tuesday	Wednesday	Thursday	Friday	Saturday
<i>Welcome to Javelina Nation!</i>					1 <u>Ebills sent</u> Payment Plans Open	2
3	4	5	6	7	8	9
10	11 Financial Aid begins disbursements after 5 p.m.	12	13 Payment Deadline	14 Late fees charged	15 <u>Drop for Non- Payment</u>	16
17	18	19	20 1st Class Day!!	21	22	23
24	25	26 5 th Class Day!	27 5 th Class Day <u>Drop!</u>	28	29	30
31						

Fall Dates

Fall Bills

August 1, 2025

Fin. Aid Disbursement

August 11, 2025 after
5 p.m.

Payment Deadline

August 13, 2025

Dropped for nonpayment

August 15, 2025

First Class Day

August 20, 2025

Polling question



Student Refund

Direct Deposit

Check

BankMobile
Vibe Account

By when should you complete your outstanding requirements?

1.July 1

2.August 11

3.August 20

4.October 1





Are you ready for college?



Nearly 7 million college students were **diagnosed with anxiety** by a healthcare professional in 2023.



64% of students reporting concussions **say it caused a delay** in graduating.



The flu seriously affected **2.5 MILLION** college students in 2023.



GradGuard's **Tuition Insurance** can help students and parents avoid a financial loss due to a covered leave of absence from school.



gradguard.com/tuition

Numbers based on American College Health Assoc. Spring 2023 Survey
Copyright ©2024 GradGuard. All rights reserved. Terms, conditions, and exclusions apply, including for pre-existing conditions. v6 050724

Nosotros
Somos

T

A

M

U

K

Thank You!



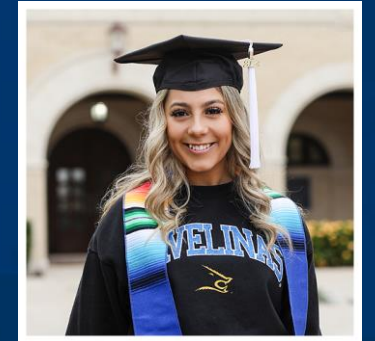
TEXAS A&M
UNIVERSITY
KINGSVILLE®



TEXAS A&M UNIVERSITY - KINGSVILLE®

IS PROUD TO SERVE YOU AS A CARING CAMPUS

THIS PANEL OF EXPERTS REPRESENTS:
The University Police Department (UPD)
Office of Compliance
The Office of The Registrar
Student Health & Wellness



TEXAS A&M UNIVERSITY-KINGSVILLE®



COLLEGE OF BUSINESS ADMINISTRATION

Group: BLUE



College of Agriculture & Natural Resources

Group: GOLD



COLLEGE OF ARTS AND SCIENCES

Group: BLUE



College of Education & Human Performance

Group: JAVELINAS



COLLEGE OF ENGINEERING

Group: JAVELINAS



PSA Students

Group: GOLD

Nosotros
Somos

T

A

M

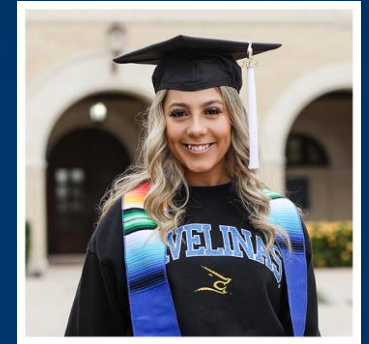
U

K

Thank You!

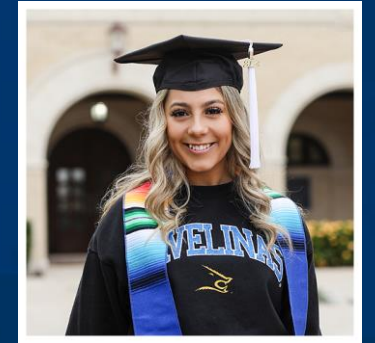


TEXAS A&M
UNIVERSITY
KINGSVILLE®



THANK YOU FOR ATTENDING

BELOW YOU WILL FIND ADDITIONAL
RESOURCES ON SUPPORT SERVICE TO
REVIEW



TEXAS A&M UNIVERSITY-KINGSVILLE®
University Police Department



- **Department of Public Safety
University Police**

- *“Integrity, Commitment, Accountability”*

HOGGIE DAYS

TEXAS A&M UNIVERSITY-KINGSVILLE



University Police



The mission of the Texas A&M University-Kingsville Police Department is to provide a safe campus that is conducive to a learning, living, teaching, and working environment by providing quality police service and a secure campus for all students and the university community.

The department operates 24 hours a day, 7 days a week.

UPD is charged with enforcing federal, state, and local laws, as well as Texas A&M University-Kingsville's Rules and Regulations.

UPD has STATE-WIDE JURISDICTION



HOGGIE DAYS

TEXAS A&M UNIVERSITY-KINGSVILLE



Contact Information



Texas A&M University-Kingsville
University Police Department
Lorine Lewis Hall
855 N. University Blvd.,
Kingsville, Texas 78363
(361) 593-2611

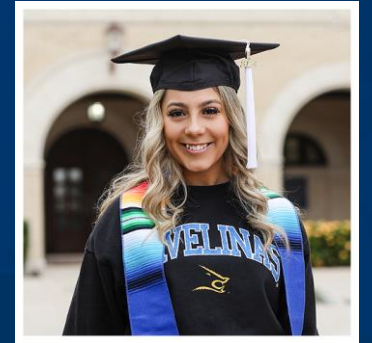
Mailing Address:
700 University Blvd., MSC 126
Kingsville Texas 78363



Website: <http://www.tamuk.edu/finance/upd/>

HOGGIE DAYS

TEXAS A&M UNIVERSITY-KINGSVILLE



TEXAS A&M UNIVERSITY-KINGSVILLE®
Office of the Registrar

Office of the Registrar

WHO ARE WE?

The Office of the Registrar preserves integrity, accuracy and privacy of educational student records.

WHERE ARE WE LOCATED?

Office Location: Memorial Student Union Building
Blue & Gold Central, Room 132

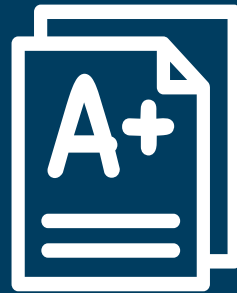
WHAT DOES THE OFFICE OF REGISTRAR HELP WITH?



CHANGE OF MAJOR



CHANGE OF
PERSONAL DATA



ADD/DROP &
WITHDRAWAL



TRANSCRIPTS &
ENROLLMENT
VERIFICATIONS



FERPA FORMS



www.tamuk.edu/index.html

Scan the QR Code to fill out the FERPA Form



Academic Calendar



www.tamuk.edu/index.html

TEXAS A&M UNIVERSITY
KINGSVILLE®

[Future Students](#) [Calendar](#) [JNET](#) [Search](#)

[About ▾](#)

[Admission ▾](#)

[Academics ▾](#)

[Research](#)

[Resources ▾](#)

[Alumni](#)

[Athletics](#)

[Make a Gift](#)

COMPLETE YOUR

FAFSA

2024-2025

CONTACT US

[Visit Us!](#)

[Financial Aid](#)

[Programs](#)

[Course Catalog](#)

[Course Schedule](#)

Academic Calendar

TEXAS A&M UNIVERSITY
KINGSVILLE®

[Future Students](#) [Calendar](#) [JNET](#) [Search](#)

[About](#) ▾

[Admission](#) ▾

[Academics](#) ▾

[Research](#)

[Resources](#) ▾

[Alumni](#)

[Athletics](#)

[Make a Gift](#)

[Academic Affairs](#)

[Academics Home](#)

[Course Catalog Home](#)

[Course Schedule](#)

[Dick and Mary Lewis Kleberg College of Agriculture and Natural Resources](#)

[College of Business Administration](#)

[Frank H. Dotterweich College of Engineering](#)

[College of Education and Human Performance](#)

[College of Arts & Sciences](#)

[College of Graduate Studies](#)

[Honors College](#)

YES

Orientation



CONTACT US

[Visit Us!](#)

[Financial Aid](#)

[Programs](#)

[Course Catalog](#)

[Course Schedule](#)

Academic Calendar

Academic Calendar

[Home](#)[Academic Calendar](#)[Catalog Archives](#)[Fall 2025- Summer 2026](#)[Fall 2024 - Summer 2025](#)[Fall 2023 - Summer 2024](#)[Fall 2022 - Summer 2023](#)[Fall 2021 - Summer 2022](#)

Fall 2025

- [Fall 2025 - 16 Weeks](#)
- [Fall 2025 - 1st 8 Weeks](#)
- [Fall 2025 - 2nd 8 Weeks](#)

Fall 2025 RELLIS Campus Only

- [Fall 2025 - RELLIS](#)

Interession 2025

- [Winter 2025 - 2 Weeks](#)

Spring 2026

- [Spring 2026 - 16 Weeks](#)
- [Spring 2026 - 1st 8 Weeks](#)
- [Spring 2026 - 2nd 8 Weeks](#)

Spring 2026 RELLIS Campus Only

- [Spring 2026 - RELLIS](#)

Spring Interession 2026

- [Spring 2026 - Spring Interession](#)

Academic Calendar

2025-2026 Academic Calendar – 18 February 2025

Fall 2025 Semester - 16 Weeks (Part of Term 1) (August 20 – December 11)	Date	Time
Priority Enrollment begins – 2025 Fall	Apr. 7	8 a.m.
Late Enrollment begins (\$35 late fee will be assessed to students enrolling late).	Aug. 4	
Students enter into a payment plan or pay tuition/fees may re-enroll for classes using JNet. Will be assessed a Late Payment Fee (\$35) and a Late Enrollment Fee (\$35). Class availability is not guaranteed.	Aug. 15	
Enforced Withdrawal or Academic Suspension - students who have not obtained permission to continue studies will be dropped from all courses.	Aug. 19	8 a.m.
Blackboard access available for students	Aug. 19	
First Class Day	Aug. 20	
5 th Class Day (drops for non-payment). Percentage of tuition & fees will be owed.	Aug. 26	5 p.m.
First Class Day for all Saturday students	Aug. 23	
6 th class day to 9 th class day, students may fill out an add/drop form with the Registrar's Office to be reinstated in classes. (\$100 Reinstatement Fee)	Aug. 27 – Sept. 2	
No enrollment beyond this date	Sept. 2	5 p.m.
12 th Class Day--Census Date	Sept. 5	
Students who did not pay in full or make payment arrangements will be dropped from all classes. Percentage of tuition & fees will be owed. (13 th Class Day Drop)	Sept. 8	8 a.m.
20 th Class Day	Sept. 17	
Non-Funded Late Enrollment deadline to submit form	Sept. 17	5 p.m.
Mid Semester Point	Oct. 15	
Title IV 60% of Semester	Oct. 27	5 p.m.
Last day to drop a course or withdraw from current semester	Oct. 28	5 p.m.
Priority Enrollment begins: Spring 2026, Spring Intersession 2026 & Summer 2026		
-Priority One Group (includes doctoral and graduate students)	Nov. 3	8 a.m.
-Post Baccalaureate & Seniors (90-120+ earned hrs)	Nov. 4	8 a.m.
-Juniors (60-89 earned hrs)	Nov. 5	8 a.m.
-Sophomores (30-59 earned hrs)	Nov. 6	8 a.m.
-Freshmen (0-29 earned hrs)	Nov. 7	8 a.m.
-Enrollment opens for all students	Nov. 10	8 a.m.
Last Class Day	Dec. 3	
Study Day - No Classes	Dec. 4	
Final Examinations	Dec. 5 - 11	
Commencement	Dec. 12	TBA
Financial Aid Important Dates		
Deadline for Office of Financial Aid to run Satisfactory Academic Progress (SAP)	Aug. 10	1 p.m.
Financial aid begins posting to student accounts.	Aug. 11	11:59 p.m.
Deadline to submit Satisfactory Academic Progress (SA) for Fall	Sept. 5	5 p.m.
Verification deadline to receive financial aid consideration for Fall term	Nov. 3	5 p.m.
Last day to submit Fall Financial Aid Revision Request	Nov. 3	5 p.m.
Deadline to accept and complete loan requirements for fall loan disbursement	Nov. 3	5 p.m.

Payment Information (Business Office)

Tuition Payment Plans open for enrollment	Aug. 1	
Payment Deadline (\$35 fee is paid after)	Aug. 13	11:59 p.m.
Employee Tuition Assistance Scholarship Deadline	Aug. 13	
Late Payment fees assessed (\$35)	Aug. 14	
First Refund Processed	Aug. 14	
Students who have not signed up for a payment plan or paid in full are dropped for nonpayment. (Prior to First Class Day - Hard Drop)	Aug. 15	12 p.m.
Scheduled Drops Dates for Non-Payment:		
5 th Class Day	Aug. 27	8 a.m.
12 th Class Day	Sept. 8	8 a.m.
20 th Class Day	Sept. 18	8 a.m.
Percentage of tuition & fees will be owed. Refer to the <i>Withdrawal from the University</i> at http://www.tamuk.edu/registrar/RGAD_ACADEMICPROCEDURES/Withdraw.html		
Last day to pay in full or make payment arrangements	Sept. 5	
Three-peat charges finalized to student account	Sept. 8	
December 2025 Graduation Deadlines		
Blue & Gold on line application opens for December commencement	Apr. 1, 2025	8 a.m.
Blue & Gold on line application closes for December commencement	Aug. 20, 2025	5 p.m.
Final Deadline for Colleges to Approve December graduation applications.	Sept. 2	5 p.m.
Change of Name Deadline request to Office of the Registrar	Sept. 3	5 p.m.
Colleges will submit Approved List of Candidates to Provost & VPAA	Sept. 12	5 p.m.
Graduation Cancellation Deadline	Nov. 26	5 p.m.
Commencement	Dec. 12	TBA
Holidays and Breaks		
Labor Day Holiday – No Classes (PENDING APPROVAL)	Sept. 1	
Fall Break – No Classes (Students & Faculty Only)	Oct. 16 - 17	
Thanksgiving Holiday – No Classes (PENDING APPROVAL)	Nov. 27 – 28	
Religious Holy Days		
Housing and Meal Plans		
Residence Halls open	Aug. 16	9 a.m.
Housing/Dorm Room Payment Deadline	Sept. 5	5 p.m.
Meal Plan Payment Deadline	Sept. 5	5 p.m.
Meal Plan Suspension	Sept. 8	8 a.m.
Residence Halls close for Thanksgiving Holiday	Nov. 26	6 p.m.
Residence Halls re-open after Thanksgiving Holiday	Nov. 30	2 p.m.
Residence Halls close	Dec. 12	6 p.m.

CONTACT US



361-593-2811



registrar@tamuk.edu



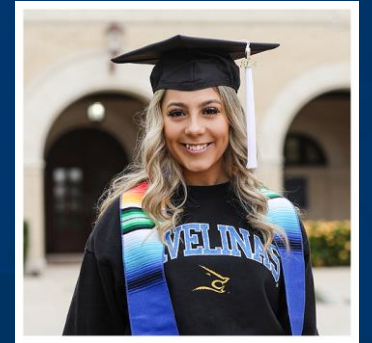
www.tamuk.edu/registrar/index.html



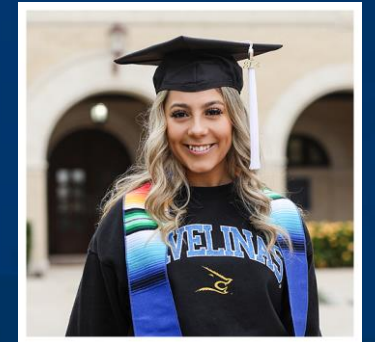
Texas A&M University-Kingsville, MSC 105
1050 W. Santa Gertrudis Ave.
Kingsville, Texas, 78363-8202

Hours of Operation:

Monday - Friday: 8:00 AM - 5:00 PM



TEXAS A&M UNIVERSITY-KINGSVILLE®
Office of Compliance & Title IX



TEXAS A&M UNIVERSITY-KINGSVILLE®

Questions

You can use the QR code to ask any questions you have as I go through the presentation.

Presentation Questions



Office of Compliance

Oversees and facilitates policy relating to civil rights violations.

All faculty, staff and students should have access to university programs and activities without experiencing discrimination because of their:

- *Race*
- *Color*
- *National Origin*
- *Age*
- *Religion*
- *Physical Disability*
- *Mental Disability*
- *Veteran Status*
- *Genetic Information*
- *Sex**
- *Gender Identity*
- *Sexual Orientation*
- *Pregnancy Status*
- *Related Retaliation*

See System Regulations 08.01.01, 08.01.02, & 08.01.03
for more information

*Includes Sexual Misconduct: Sexual Assault, Sexual
Harassment, Stalking based on Sex, Relationship Violence

Reporting Options

University

- Faculty & Staff = Mandated Reporters
- Confidential Reporting @ SHW
- Safety Planning
- Administrative Process

Police

- Criminal Process
- Safety Planning
- Protective Orders
- Transportation for SANE

S.A.N.E (Forensic Exam)

- Driscoll Hospital
- Doctor's Regional
- **48 HOURS** for **DRUG** testing
- **5 DAYS** to collect evidence
- **ASAP** is best practice
- Best to avoid showering, restroom, changing clothes
- **FREE**

Supportive Measures

- *Mutual Orders of No Contact*
- *Reporting to UPD*
- *Counseling with Student Health and Wellness*
- *Changes in On-campus Housing*
- *Changes in Class Schedules*
- *Changes in Work/Training/Practice Schedules*
- *Communicating with Professors Regarding*
 - *Absences*
 - *Missed Course Work*
- *Assistance to Contact Off Campus Resources*
 - *Reporting to KPD*
 - *Transportation for SANE exam*
 - *Advocacy*
 - *Off-campus housing changes*
 - *Protective Orders*
 - *Legal Aid*
 - *Off-campus housing changes*
 - *Protective Orders*

A formal complaint is not required to obtain supportive measures.

Sexual Misconduct Incidents

Sexual Assault

- Oral Sex
- Digital Penetration
- Fondling
- Ignoring boundaries

Sexual Harassment

- Continual, unwanted words or conduct of a sexual nature or otherwise

Relationship Violence

- Throwing things
- Choking
- Hitting/Slapping
- Threats
- Roommate Violence

Stalking Based on Sex

- Following
- Surveilling
- Unwanted Gifts
- Threats
- Showing up at someone's dorm, house, class, or work
- Ignoring boundaries

Sexual Exploitation

- Lying about STI
- Lying about condom use
- Taking pictures/video without consent
- Sharing pictures/video without consent
- Sending images of private parts without consent

Retaliation

- Harassment toward someone who files a complaint
- Treating someone different because they filed a complaint

On and Off Campus Incidents are Reportable

Sanctions

Sexual Harassment

- *Warning*
- *Probation*
- *Suspension*
- *Expulsion*

Sexual Assault

- *Suspension*
- *Expulsion*

Relationship Violence

- *Suspension*
- *Expulsion*

Stalking Based on Sex

- *Warning*
- *Probation*
- *Suspension*
- *Expulsion*

Sexual Exploitation

- *Probation*
- *Suspension*
- *Expulsion*

Retaliation

- *Suspension*
- *Expulsion*

Other Sanctioning Components

- *Loss of Eligibility to Represent the University*
- *Loss of Eligibility for Institutional Scholarships*
- *Other Sanctioning Requirements: Training, Workshops, Assessments, etc.*

On and Off Campus Incidents are Reportable

Consent

CLEAR, WORDS, and **ACTIONS** that creates a **MUTUAL AGREEMENT** regarding the sexual activity that will take place.

NOT CONSENT

- *Threats*
- *Pressure*
- *Coercion*
- *The way someone is dressed*
- *Flirtatious behavior*
- *Prior encounters*
- *Sexual History*

MYTHS:

- *Requires physical violence*
- *Only committed by strangers*
- *Only happens to women*
- *Persistence = Consent*
- *Consent is continuous*

Look for an **ENTHUSIASTIC** partner.

DRINKING FACTS

- One Red-solo cup of Jungle Juice contains about 6 standard drinks.
- It takes about one hour to process one standard drink
- If someone is incapacitated, they cannot consent. If they make the first move, but they exhibited symptoms above... IT IS BEST TO WAIT!

Incapacitation Warning Signs

- Vomiting
- Stumbling
- Passing Out
- Can't Focus
- Alcohol Smell
- Can't Answer Questions
- Mood Swings
- Glazed Look
- Slurred Speech



Relationships

UNHEALTHY

- *Intensity*
- *Possessiveness*
- *Manipulation*
- *Isolation*
- *Sabotage*
- *Belittling*
- *Guilting*
- *Volatility*
- *Deflecting Responsibility*
- *Betrayal*

HEALTHY

- *Comfortable Pace*
- *Trust*
- *Honesty*
- *Independence*
- *Respect*
- *Equality*
- *Kindness*
- *Taking Responsibility*
- *Healthy Conflict*
- *Fun*

This presentation focuses on sex-based discrimination.

Bystander Intervention

OPTIONS TO INTERVENE

1. **Direct** – speak to the event taking place and the likely outcome
2. **Delegate** – seek help from friends and/or authority figures to help you intervene
3. **Distract** – Interrupt the situation with a distraction that doesn't bring attention to the situation

If you do not feel **SAFE** intervening, **CALL 911** from a **SAFE** location.

Pregnancy and Parenting

- Students cannot be excluded from a program or activity
- Students are provided opportunities to make-up missed course work/attendance credits for medically necessary absences
- Students can also request temporary accommodations
- Temporary parking permits are available for pregnant students
- Lactation rooms
 - Lewis
 - 2nd Floor Music Education Complex

PREGNANCY

Tasha Clark
Office of Compliance
Lewis Hall, RM 130
361-593-4758
titleix@tamuk.edu

PARENTING

Kirsten Compary
Office of the Dean of Students
MSUB, RM 306
361-593-3606
kirsten.compary@tamuk.edu

Required Training

Training Link: <https://tamukstudents-tx.vectorlmsedu.com/>

Log In ID: Campus Email

Password: Jnet Password

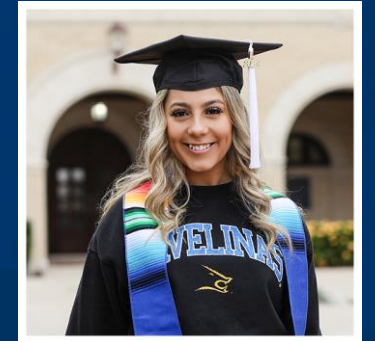
Training **DUE** by **PRIORITY REGISTRATION**

Contact Info

Office of Compliance
Lewis Hall, Suite 130
361-593-4758

Join the Email list for updates on
campus events and changes to
Title IX





TEXAS A&M UNIVERSITY-KINGSVILLE®

STUDENT HEALTH & WELLNESS

Student Health & Wellness



Javelina Health Clinic



Counseling Services



Disability Resource Center



Wellness Program

Contact Information:

(361) 593-3991

1210 N. Retama St.

Or Visit our website:

<http://tamuk.edu/shw>

Fall 2025 SEMESTER SERVICES

Beginning date: Wednesday, August 20, 2025

Ending date: Thursday, December 11, 2025

*Student must be currently enrolled and classes must be in session.

Javelina Health Clinic



Texas A&M University-Kingsville has partnered with Community Action Corporation of South Texas (CACOST) to offer students high-quality, non-emergent, primary care services on campus.

- Services are available by walk-in or appointment. Virtual telehealth services will also be available for students who have established care.
- Health services are available at no additional cost to currently enrolled students.



Call **361-239-0600** to Schedule an Appointment

COUNSELING SERVICES

Offers Face2Face and Tele-Mental Health

Services Include:

- Personal Counseling
- Crisis Counseling
- Group Counseling/Wellness Workshops
- QPR: Suicide Prevention
- U-Turn – Academic Program
- POWER – Resiliency Program
- DAAPP – Substance Use/Abuse
- Next Steps – Career Counseling
- Relaxing Moment Massage Chair and Mindfulness Sessions

Licensed Professional Counselors

Free and Confidential



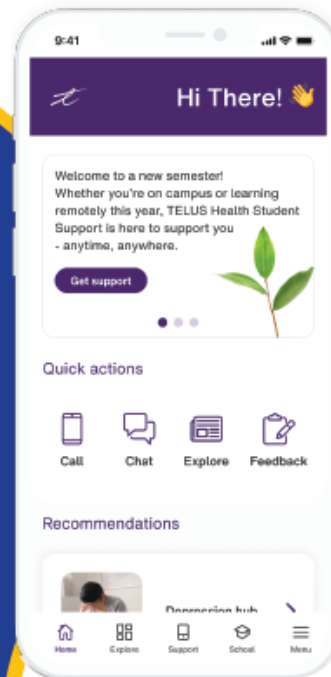
Relaxing Moment

Contact Information: 361-593-5080



TAKE CARE OF YOUR MENTAL HEALTH

STUDENT SUPPORT APP



VIRTUAL CARE
PROVIDED BY

 **TELUS** Health

Download the TELUS Health Student Support app for 24/7 access to professional counseling by phone or chat in multiple languages.



**SCAN TO
DOWNLOAD
TODAY!**

DISABILITY RESOURCE CENTER (DRC)



Services Include:

- Exam Accommodations
- Note-Taking Assistance
- Scribe and Readers Services
- Assistive Technology
- Interpreter Services

Complete and submit your application for Disability Services through the AIM portal.

The portal can be found here: www.tamuk.edu/drc

Contact Information: 361-593-3024



WELLNESS PROGRAM

Wellness program focuses on education, prevention, intervention services involving alcohol and other drug use and misuse, nutrition, sexual health, relationships, and power based violence.



Award Winning Peer Educator Program – PEP Talk

Nosotros
Somos

T

A

M

U

K

Thank You!



TEXAS A&M
UNIVERSITY
KINGSVILLE®