



TEXAS A&M UNIVERSITY KINGSVILLE

2015-2016 FACT BOOK

UNIVERSITY STATISTICAL PROFILE



Twenty-First Edition

Texas A&M University-Kingsville 2015-2016 Fact Book
21st Edition

Please direct questions or comments regarding the *2015-2016 Fact Book* to:

Texas A&M University-Kingsville
Office of Institutional Research
Miao Zhuang, Director

955 University Blvd.
College Hall 231/MSC 215
Kingsville, TX 78363
www.tamuk.edu/oir

Phone: (361)593-2244
Fax: (361)593-4141
Email: koir2000@tamuk.edu

PREFACE

The *Texas A&M University-Kingsville 2015-2016 Fact Book* is an annual publication designed to provide frequently used information about the University. All student data included in the *Fact Book* is based on official state reports. Information concerning faculty, staff, library, fiscal, research, and facilities originated from the offices who oversee that information.

Not finding the data you need? Please, give us a call. The Office of Institutional Research also produces reports of institutional information including headcount, semester credit hours, and graduation reports as well as college and departmental level performance reports. For your convenience a data request form is provided in the appendix of this document.

Finally, your comments are greatly appreciated. With your input, we can continue to improve this publication and respond to the needs of the university community. If you have any questions concerning this publication or any other data needs, do not hesitate to contact our office at (361) 593-2244.

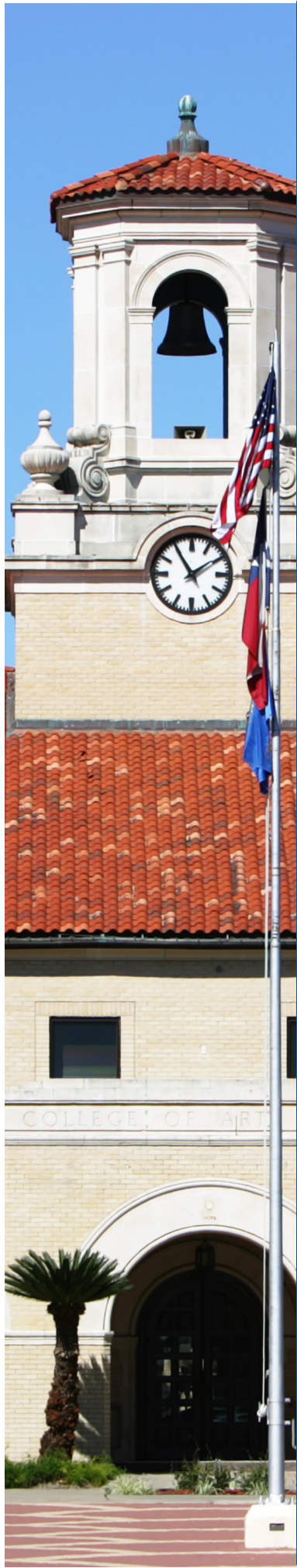
Miao Zhuang, Director
Institutional Research

CONTENTS

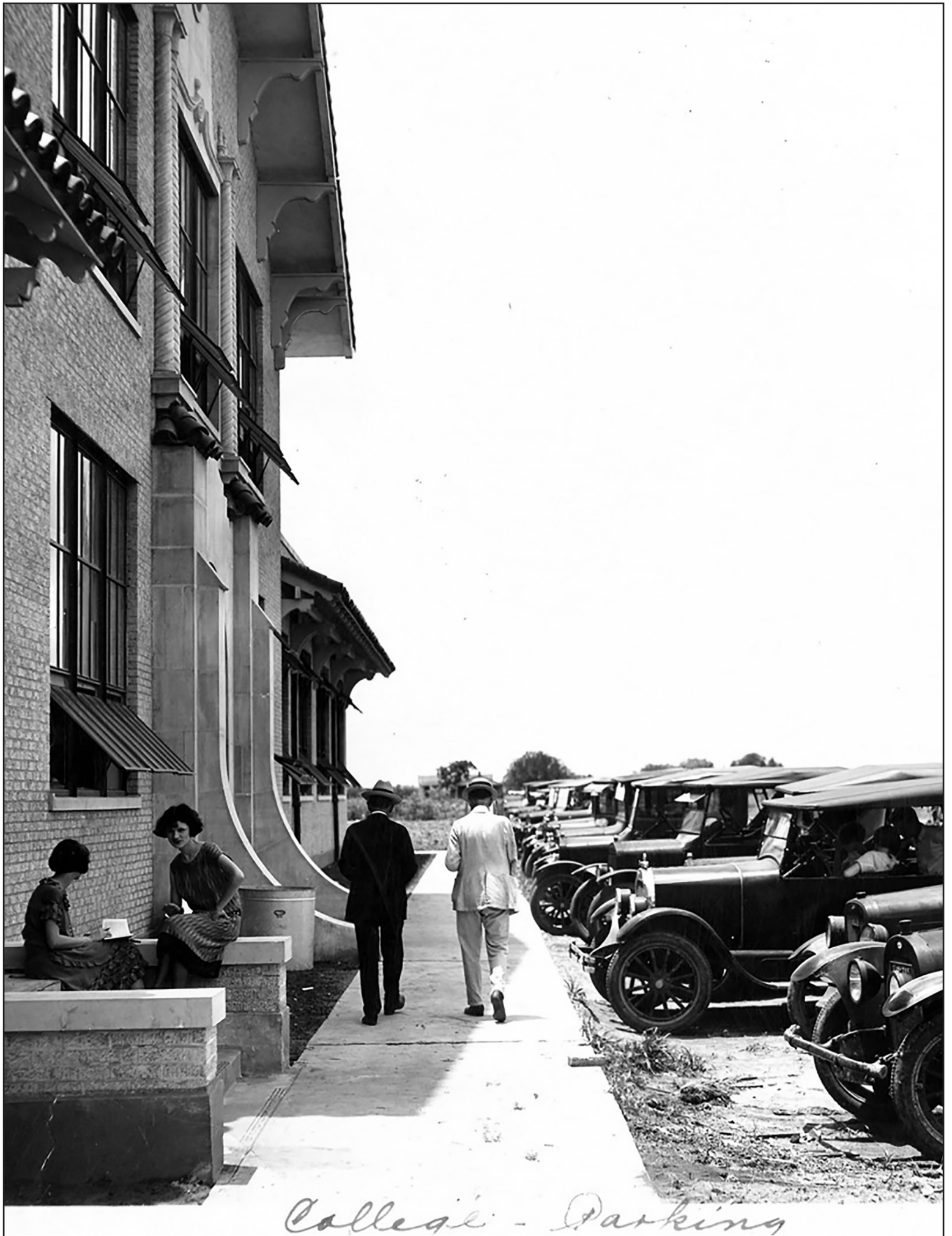
Preface.....	i
SECTION 1: THE UNIVERSITY.....	1
University History.....	3
Vision, Mission, Core Values, & Imperatives.....	4
Accreditations & Certifications.....	5
Carnegie Classification.....	6
University Profile.....	6
University Administration.....	7
University Organizational Charts.....	8
Degrees Offered.....	12
SECTION 2: UNIVERSITY STATISTICS.....	17
Definitions.....	19
University Enrollment.....	20
Top Majors.....	27
Degrees Granted.....	28
Semester Credit Hours.....	33
Undergraduate Cohort.....	36
Student Demographics.....	37
Undergraduate Admissions.....	43
High School Percentiles.....	44
Entrance Exam Scores.....	45
Recruitment.....	47
SECTION 3: FACULTY & STAFF INFORMATION.....	49
Definitions.....	51
Faculty By Ethnicity.....	52
Faculty By Gender.....	54
Faculty By Rank.....	55
Faculty By Tenure Status.....	56
Staff-Budgeted.....	58
SECTION 4: UNIVERSITY FACILITIES.....	59
Facilities Overview.....	61

Main Campus	61
Off Campus	62
Facilities Inventory	64
Residence Hall Occupancy	67
Campus Map	68

SECTION 5: APPENDIX	69
Data Request Form	71
Survey	73



SECTION 1: THE UNIVERSITY



College - Parking

UNIVERSITY HISTORY

Texas A&M University-Kingsville grew out of the teacher college or “normal school” movement that swept Texas and the nation in the early 1900s. Chartered in 1917 but not opened until July 8, 1925 because of America’s entry into World War I, the University is the oldest continuously operating public institution of higher learning in South Texas. In its first semester, the University, known then as the South Texas State Teachers College, enrolled 114 regular college students and offered a limited number of degrees, specifically a Bachelors of Arts and Bachelors of Science of Education.

THE CHANGING NAME

The University has experienced several name changes since it first opened in 1925. Shortly after beginning life as South Texas State Teachers College, the University’s role was expanded to embrace a wider array of programs. As its mission has expanded, its name has changed to reflect its wider scope. Its first name change, to Texas College of Arts and Industries, came in 1929. In 1967, the name changed to Texas A&I University. In 1989, the University became a member of the Texas A&M University System and in 1993 changed its name to Texas A&M University-Kingsville to reflect that membership.

THE UNIVERSITY TODAY

Today, Texas A&M University-Kingsville remains South Texas’ greatest university, offering more academic programs and degrees, providing better learning and living facilities, conducting more research, awarding more scholarships, and producing more successful graduates than any other college or university in the region. The University seeks to provide quality undergraduate and graduate programs for students of all ages through a judicious blend of liberal and career education programs. The emphasis is on providing an intellectually challenging education reflecting high standards of academic

performance. The University is also dedicated to serving an ethnically and culturally diverse population and is committed to its mission of teaching, research, and service in South Texas for the advancement of knowledge and of regional development.

HISTORICAL FACTS OF INTEREST

- May 1927 - the first commencement exercise was held, with eight degrees granted
- 1929 - the first degree awarded to a Mexican American was awarded to Adelina Pena De Garcia
- Summer 1936 - graduate level courses were offered for the first time
- 1959 - the first degree awarded to an African American was awarded to Emma Rebecca Summers, a M.A. in Education
- 1975 - the University established the first doctoral program in Bilingual Education in the nation
- Fall 2014 - University enrollment reaches an all-time high of 8,687 students



VISION, MISSION, CORE VALUES, & UNIVERSITY GOALS

VISION

Texas A&M University-Kingsville is committed to being a renowned, diverse community of learners and innovators.

MISSION

The mission of Texas A&M University-Kingsville is to enrich lives through education, discovery and service in South Texas and beyond.

CORE VALUES

EXCELLENCE: Continuous achievement of high standards

INTEGRITY: Ethical conduct in all endeavors

OPPORTUNITY: Pursuit of personal and professional growth

DISCOVERY: Expansion and application of knowledge

SERVICE: Actions beneficial to others

UNIVERSITY GOALS

1. **Learning:** Experiences that prepare students intellectually, creatively, ethically and socially
2. **Research:** Scholarly work that contributes to the quality of life and the body of knowledge
3. **Student-focused Environment:** An evolving campus conducive to life, learning and success for a diverse student body
4. **Prominence:** Renowned programs, faculty, staff and students
5. **Growth:** Strategic increases in student enrollment, institutional influence and campus resources

ACCREDITATIONS & CERTIFICATIONS

REGIONAL ACCREDITATION

Texas A&M University-Kingsville is accredited by the Southern Association of Colleges and Schools Commission on Colleges to award baccalaureate, master's and doctorate degrees. Contact the Commission on Colleges at 1866 Southern Lane, Decatur, Georgia 30033-4097 or call 404-679-4500 for questions about the accreditation of Texas A&M University-Kingsville.

PROGRAM ACCREDITATION

Department of Human Sciences' Didactic Program in Dietetics and Dietetic Internship by the Accreditation Council for Education in Nutrition and Dietetics (ACEND) (120 South Riverside Plaza, Suite 2000, Chicago, IL 60606-6995, 312-899-5400).

Chemistry Program by the American Chemical Society (certified program)

Graduate Program in Communication Sciences and Disorders accredited by the Council on Academic Accreditation in Audiology and Speech-Language Pathology of the American Speech-Language-Hearing Association

Department of Music by National Association of Schools of Music

Program in Social Work by the Commission on Accreditation of the Council on Social Work Education

College of Business Administration by Association of Collegiate Business Schools and Programs

Teacher/Educator Certification Accredited by the Texas State Board of Educator Certification

Programs Accredited by the Engineering Accreditation Commission of ABET - Architectural, Chemical, Civil, Electrical, Environmental, and Mechanical Engineering (415 North Charles Street, Baltimore, MD 21201: Telephone number 410-347-7700)

Program Accredited by the Computing Accreditation Commission of ABET – Computer Science (415 North Charles Street, Baltimore, MD 21201: Telephone number 410-347-7700)

Association of Technology, Management and Applied Engineering (ATMAE) accredited program in Industrial Management and Technology

CARNEGIE CLASSIFICATION

BASIC TYPE:

Doctoral/Research Universities

SIZE AND SETTING:

Medium four-year, primarily residential

ENROLLMENT PROFILE:

High undergraduate

UNDERGRADUATE PROFILE:

Medium full-time four-year, inclusive

UNDERGRADUATE INSTRUCTIONAL PROGRAM:

Balanced arts and sciences/professions, high graduate coexistence

GRADUATE INSTRUCTIONAL PROGRAM:

Doctoral, professional dominant

UNIVERSITY PROFILE

TYPE:

Public, four-year university

CAMPUS:

The University is located in historic Kingsville, a friendly, safe city of 25,000 that is the home of the legendary King Ranch. Corpus Christi and its beaches are just 40 miles away to the northeast, and the border of Mexico is 120 miles to the south at Brownsville or 119 miles to the west at Laredo.

SPONSORSHIP AND CONTROL:

The nine-member Texas A&M System Board of Regents is appointed by the Governor of the state of Texas. Members serve a staggered six-year term.

ENROLLMENT FALL 2014:

9,207 Students [4,002 Female - 5,205 Male]
6,827 Full-time - 2,380 Part-time
5,077 Full-time Undergraduate - 1,750 Full-time Graduate

DEGREES GRANTED 2014-2015:

989 Bachelor's Degrees
1,228 Master's Degrees
38 Doctoral Degrees

TEACHING FACULTY:

480 Faculty [196 Female - 284 Male]
273 Tenured or Tenure Track

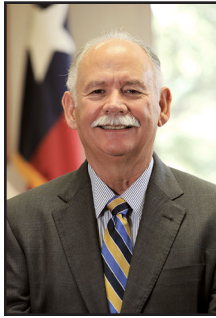
ACADEMIC COLLEGES:

Dick & Mary Lewis Kleberg College of Agriculture, Natural Resources, and Human Sciences
College of Arts & Sciences
College of Business Administration
College of Education & Human Performance
Frank H. Dotterweich College of Engineering
Honors College

LIBRARY:

Total Volumes Held - 1,421,936
Paper Volumes - 652,842
Microforms - 424,724
AV Materials - 10,165
Total Volumes of Paper, Microforms, and AV Materials - 1,087,731
Journals (paper subscriptions) - 441
Journals (full text electronic access) - 40,714
Subscribed Databases - 130
EBooks - 187,492
Streaming Audio Files - 74,506
Streaming Video Files - 1,225
Catalog Records for Full Text Electronic Government Documents - 70,982

UNIVERSITY ADMINISTRATION



President
Steven H. Tallant



Chief of Staff
Randy Hughes



Provost & Vice President
for Academic Affairs
Heidi Anderson



Senior Vice President for
Student Affairs, Enrollment
Management, & University
Administration
Terisa Riley



Vice President for Finance
and Chief Financial Officer
Raajkumar S. Kurapati



Vice President for
Intercollegiate Athletics &
Campus Recreation
D. Scott Gines



Associate Vice President
for Academic Affairs
Duane Gardiner



Associate Vice President
for Marketing &
Communications
Cheryl Cain



Associate Vice President for
Research & Dean of Graduate
Studies
George Allen Rasmussen



Associate Vice President
for Student Success
Nancy King Sanders



Associate Vice President
for Student Access
Mary Gonzalez



Associate Vice President for
Information Technology/CIO
Robert Paulson



Associate Vice President
for Support Services
Ralph Stephens



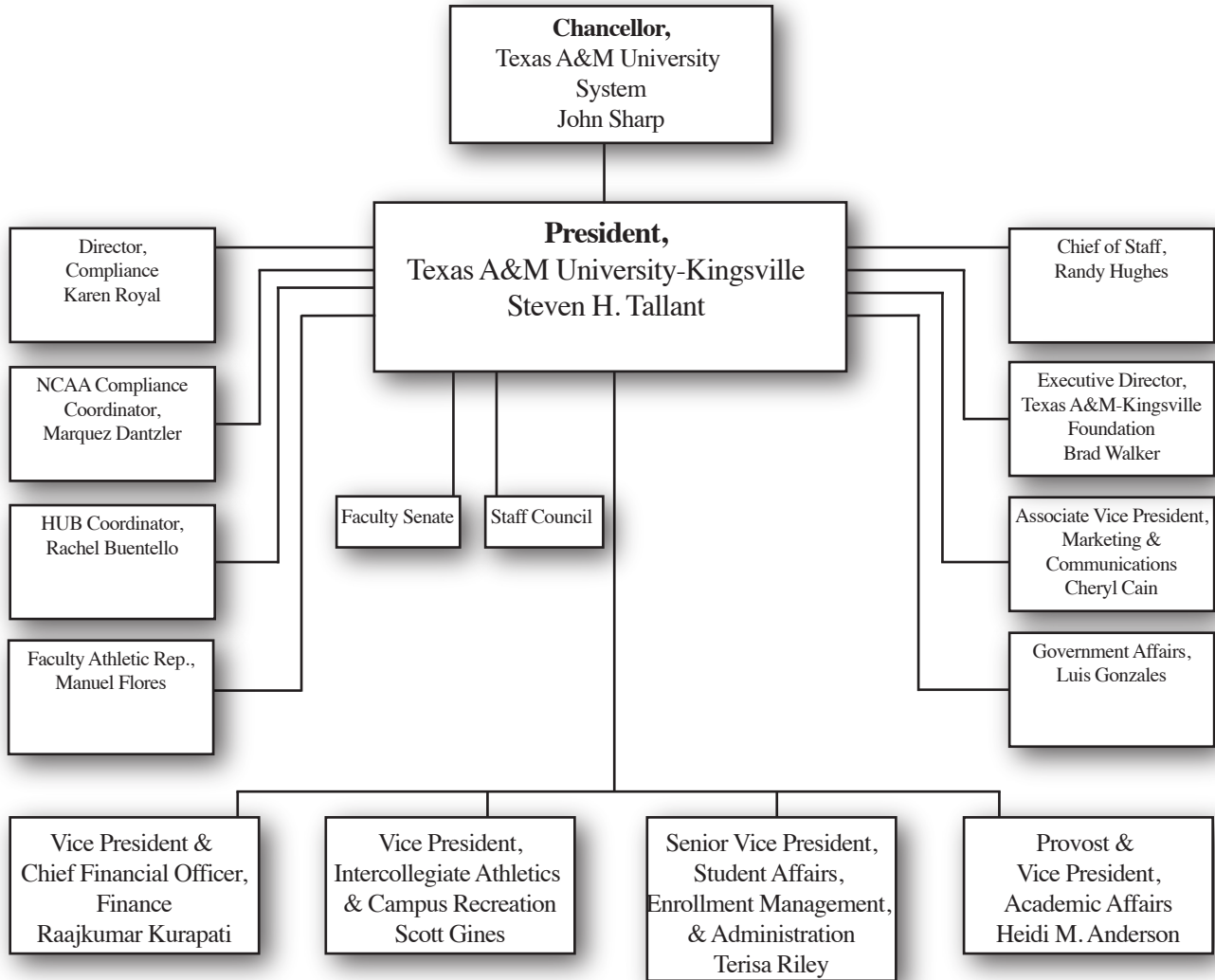
Interim Associate Vice
President for Finance &
Comptroller
Joanne Macias



Assistant Vice President &
Dean of Students
Kirsten Compary

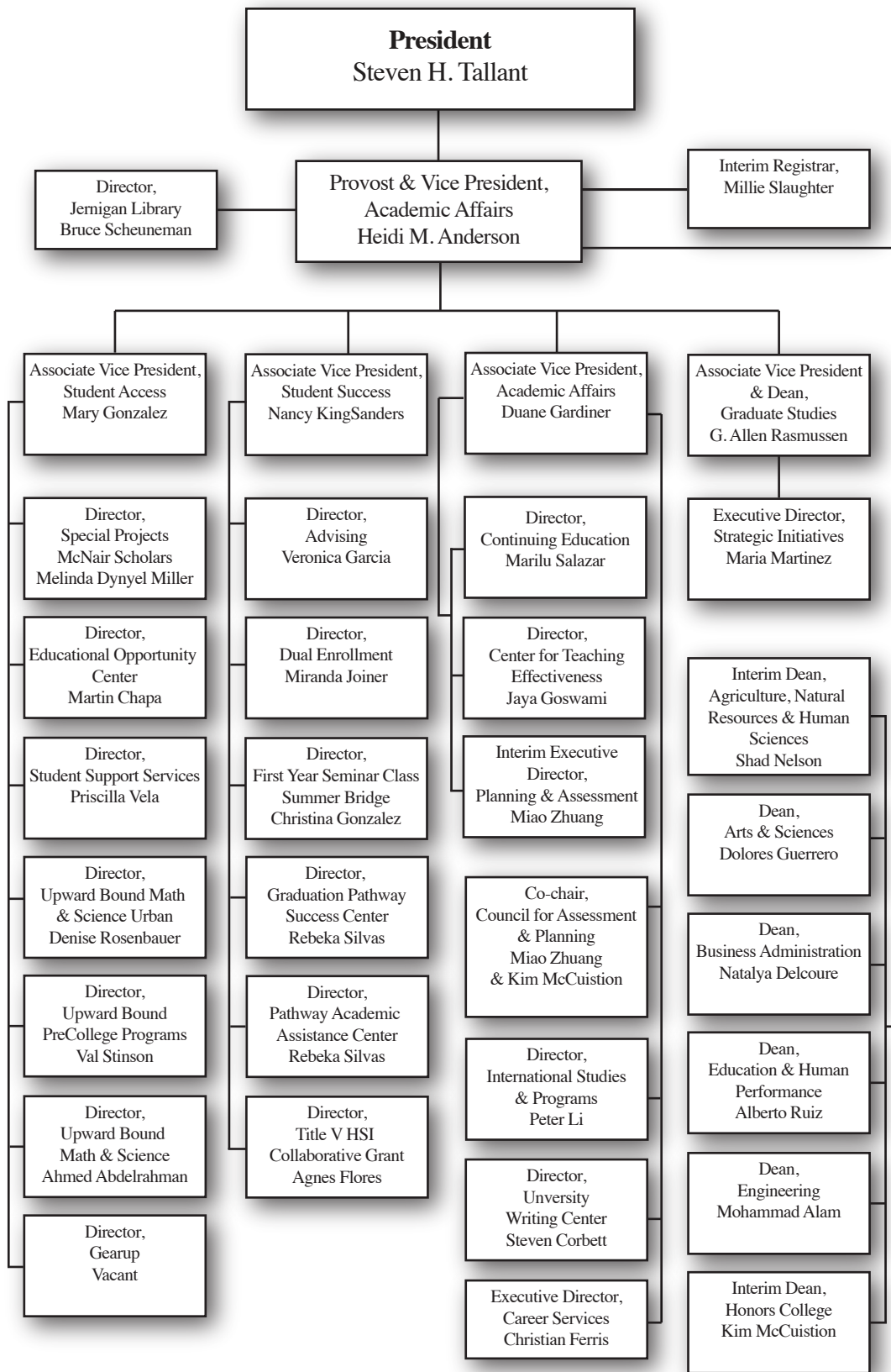
UNIVERSITY ORGANIZATIONAL CHARTS

FIGURE 1. PRESIDENTIAL DIRECT REPORTS



UNIVERSITY ORGANIZATIONAL CHARTS (CONTINUED)

FIGURE 2. DIVISION OF ACADEMIC AFFAIRS



UNIVERSITY ORGANIZATIONAL CHARTS (CONTINUED)

FIGURE 3. DIVISION OF STUDENT AFFAIRS, ENROLLMENT MANAGEMENT, & ADMINISTRATION

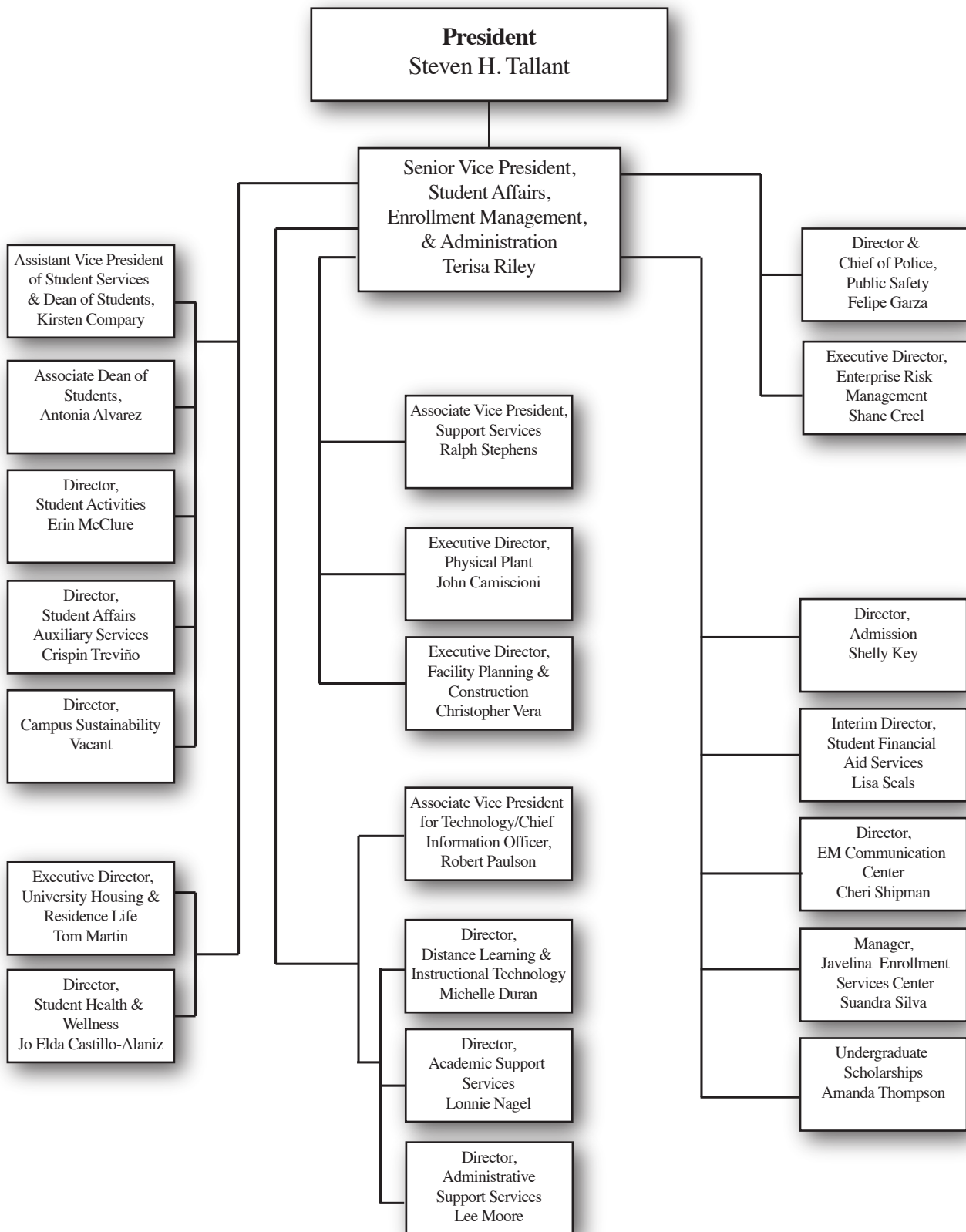


FIGURE 4. DIVISION OF FISCAL AFFAIRS

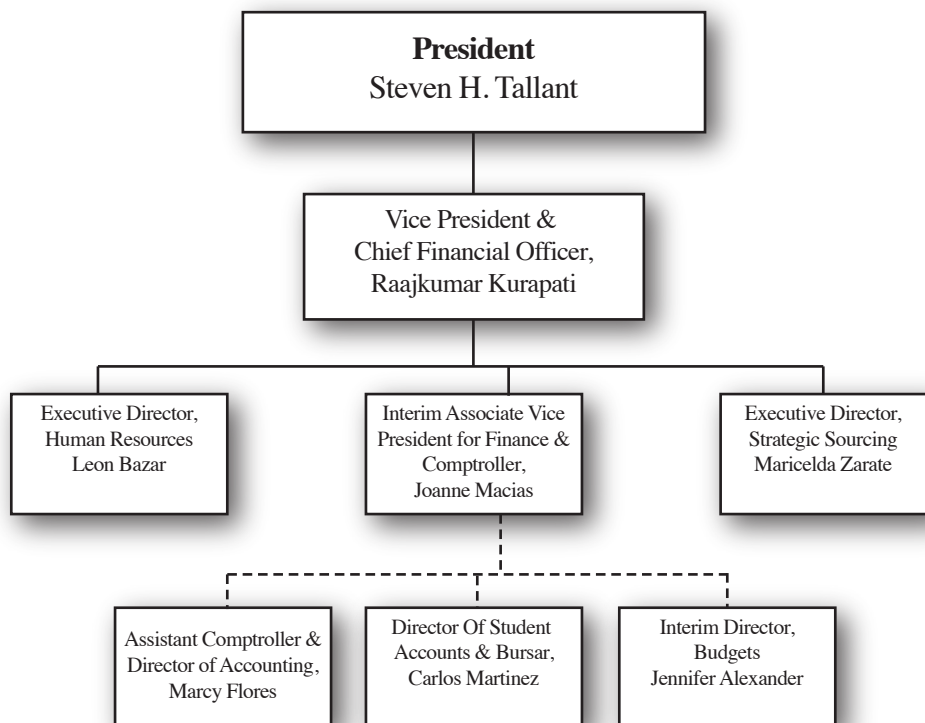
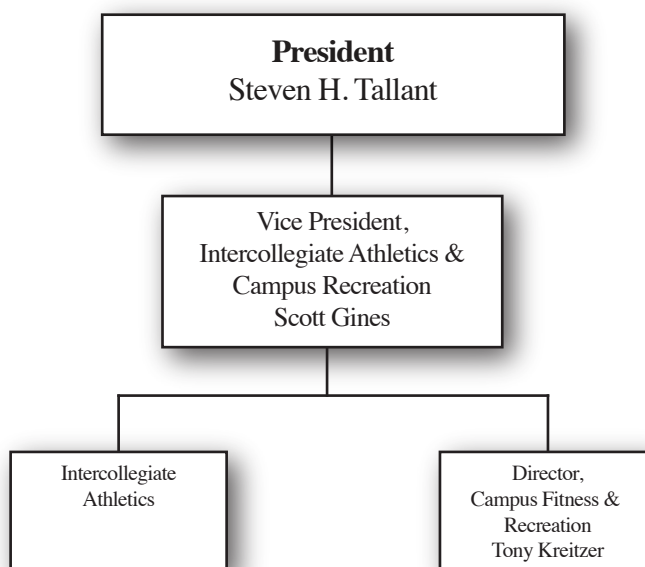


FIGURE 5. DIVISION OF INTERCOLLEGIATE ATHLETICS AND CAMPUS RECREATION



DEGREES OFFERED

TABLE 1. UNDERGRADUATE DEGREES

COLLEGE / DEPARTMENT / DISCIPLINE	PROGRAM	LENGTH (HOURS)
Dick and Mary Lewis Kleberg College of Agriculture, Natural Resources, and Human Sciences		
Department of Agriculture, Agribusiness, and Environmental Sciences		
Agribusiness	B.S.Ag.	120
Agriculture Science	B.S.Ag.	120
Plant and Soil Science	B.S.Ag. ¹	120
Department of Animal, Rangeland, and Wildlife Science		
Animal Science	B.S.Ag.	120
Range and Wildlife Management	B.S.Ag.	120
Animal Wildlife Veterinary Technology	B.S.Ag.	127
Department of Human Sciences		
Family and Consumer Sciences Education	B.S.H.S. ¹	120
Fashion and Interior Merchandising	B.S.H.S. ¹	120
Human Development and Family Studies	B.S.H.S. ¹	120
Human Nutrition	B.S.H.S.	122
Human Sciences	B.S.H.S.	120
College of Arts and Sciences		
Applied Arts and Sciences	B.A.A.S.	120
Department of Art, Communications, and Theater		
Art	B.A. B.F.A.	120 120
Communications	B.A.	120
Theater Arts	B.A. ²	120-127
Department of Biological Sciences		
Biology	B.A. B.S.	120 120
Biomedical Sciences	B.S.	120
Department of Chemistry		
Chemistry	B.A. B.S.	120 120
Department of Clinical Health Sciences		
Communications Sciences and Disorders	B.S.	120
Social Work	B.S.W.	120
Department of History, Political Science, and Philosophy		
Criminal Justice	B.A.	120
History	B.A.	120-127
Political Science	B.A.	120
Department of Language and Literature		
English	B.A.	120-122
Spanish	B.A.	120-122
Department of Mathematics		
Mathematics	B.A. B.S.	120 120
Department of Music		
Music	B.M.	131
Performance	B.M. ¹	120-131

DEGREES OFFERED (CONTINUED)

COLLEGE / DEPARTMENT / DISCIPLINE	PROGRAM	LENGTH (HOURS)
Department of Physics and Geosciences		
Geology	B.S.	120-124
Physics	B.S.	120
Department of Psychology and Sociology		
Criminology	B.S.	120
Psychology	B.A.	120
Sociology	B.A.	120
College of Business Administration		
Department of Accounting and Finance		
Accounting	B.B.A.	120
Finance	B.B.A.	120
Department of Management, Marketing, and Information Systems		
General Business Administration	B.B.A.	120
Information Systems	B.B.A.	120
International Business Management	B.B.A.	120
Management	B.B.A.	120
Marketing	B.B.A.	120
College of Education and Human Performance		
Department of Health and Kinesiology		
Kinesiology	B.S.	120-127
Department of Teacher and Bilingual Studies		
Interdisciplinary Studies	B.S.	120-122
Frank H. Dotterweich College of Engineering		
Wayne H. King Department of Chemical and Natural Gas Engineering		
Chemical Engineering	B.S.C.H.	130
Natural Gas Engineering	B.S.	124
Department of Civil and Architectural Engineering		
Architectural Engineering	B.S.	128
Civil Engineering	B.S.C.E.	129
Department of Electrical Engineering and Computer Science		
Computer Science	B.S.C.S.	120
Electrical Engineering	B.S.E.E.	130
Department of Environmental Engineering		
Environmental Engineering	B.S.	128
Department of Industrial Management and Technology		
Industrial Management and Technology	B.S.M.I.T.	120
Department of Mechanical and Industrial Engineering		
Mechanical Engineering	B.S.M.E.	132

Source: Program lengths taken from degree plans listed in the 2016-2017 Undergraduate Catalog. Program lengths for programs currently being phased out or consolidated taken from the 2010-2012 Undergraduate Catalog and the THECB's program inventory for Texas A&M-Kingsville.

¹ Programs to be phased out/consolidated by August 31, 2016.

² Programs to be phased out by August 31, 2018.

DEGREES OFFERED (CONTINUED)

TABLE 2. MASTER'S DEGREES

COLLEGE / DEPARTMENT / DISCIPLINE	PROGRAM	LENGTH (HOURS)
Dick and Mary Lewis Kleberg College of Agriculture, Natural Resources, and Human Sciences		
Department of Agriculture, Agribusiness, and Environmental Sciences		
Agriculture Science	M.S.	30
Plant and Soil Science	M.S.	30
Ranch Management	M.S.	30
Department of Animal, Rangeland, and Wildlife Science		
Animal Science	M.S.	30
Range and Wildlife Management	M.S.	30
Department of Human Sciences		
Human Sciences	M.S.H.S.	30
College of Arts and Sciences		
Department of Biological Sciences		
Biology	M.S.	30
Department of Chemistry		
Chemistry	M.S.	30
Department of Clinical Health Sciences		
Communications Sciences and Disorders	M.S.	30
Department of Language and Literature		
Cultural Studies	M.A.	30
Department of Mathematics		
Mathematics	M.S.	30
Statistical Analytics, Computing, and Modeling	M.S.	30-36
Department of Music		
Music Education	M.M.	30
Department of Psychology and Sociology		
Criminology	M.S.	30
Psychology	M.A.	30
	M.S.	30
Sociology	M.A.	30
	M.S.	30
College of Business Administration		
Department of Management, Marketing, and Information Systems		
Business Administration	M.B.A.	36
	M.S.	36
College of Education and Human Performance		
Department of Educational Leadership and Counseling		
Adult Education	M.Ed.	30
Counseling and Guidance	M.S.	30
Counseling Psychology	M.A.	60
Educational Administration	M.S.	30
Instructional Technology	M.S.	30
Department of Health and Kinesiology		
Kinesiology	M.S.	30

DEGREES OFFERED (CONTINUED)

COLLEGE / DEPARTMENT / DISCIPLINE	PROGRAM	LENGTH (HOURS)
Department of Teacher and Bilingual Education		
Education	M.S.	36
Bilingual Education	M.A.	30
	M.S.	30
Special Education	M.Ed.	30
Early Childhood	M.Ed.	30
Reading Specialization	M.S.	30
Frank H. Dotterweich College of Engineering		
Wayne H. King Department of Chemical and Natural Gas Engineering		
Chemical Engineering	M.Engr.	30
	M.S.	30
Natural Gas Engineering	M.Engr.	30
	M.S.	30
Department of Civil and Architectural Engineering		
Civil Engineering	M.Engr.	30
	M.S.	30
Department of Electrical Engineering and Computer Science		
Computer Science	M.S.	30
Electrical Engineering	M.Engr.	30
	M.S.	30
Department of Environmental Engineering		
Environmental Engineering	M.Engr.	30
	M.S.	30
Department of Industrial Management and Technology		
Industrial Management	M.S.	30
Department of Mechanical and Industrial Engineering		
Mechanical Engineering	M.Engr.	30
	M.S.	30
Industrial Engineering	M.S.	30

Source: Program lengths taken from degree plans listed in the 2015-2017 Graduate Catalog.

DEGREES OFFERED (CONTINUED)

TABLE 3. DOCTORAL DEGREES

COLLEGE / DEPARTMENT / DISCIPLINE	PROGRAM	LENGTH (HOURS)
Dick and Mary Lewis Kleberg College of Agriculture, Natural Resources, and Human Sciences		
Department of Animal, Rangeland, and Wildlife Science		
Wildlife Science	Ph.D.	64
College of Education and Human Performance		
Department of Educational Leadership and Counseling		
Educational Leadership	Ed.D.	63
Department of Teacher and Bilingual Education		
Bilingual Education	Ed.D.	63
Frank H. Dotterweich College of Engineering		
Sustainable Energy Systems Engineering	Ph.D.	63
Department of Environmental Engineering		
Environmental Engineering	Ph.D.	63

Source: Program lengths taken from degree plans listed in the 2015-2017 Graduate Catalog.



SECTION 2: UNIVERSITY STATISTICS



DEFINITIONS

ENROLLMENT (HEADCOUNT)

The number of students enrolled in courses offered for degree certificate or certificate credit, including students who are not admitted to a degree program. When student headcount is reported by the academic college or department, the headcount is attributed to the department that administers the student's primary major.

ACADEMIC LEVEL/STUDENT LEVEL

Freshman: A student who has fewer than 30 earned credit hours.

Sophomore: A student who has 30-59 earned credit hours.

Junior: A student who has 60-89 earned credit hours.

Senior: A student who has at least 90 earned credit hours.

Master's: A student enrolled in an approved master's program.

Doctoral: A student enrolled in an approved doctoral program.

Post Bachelor: A student who has a bachelor's degree and pursuing additional undergraduate coursework.

FULL-TIME STUDENT

An undergraduate student enrolled for 12 or more credit hours in a term or a graduate enrolled for 9 or more credit hours in a term.

PART-TIME STUDENT

An undergraduate student enrolled for fewer than 12 credit hours in a term or a graduate student enrolled for fewer than 9 credit hours in a term.

FTE (FULL-TIME EQUIVALENCY) STATUS

A statistic derived from the semester credit hour (SCH). The Legislative Budget Board (LBB) and the Texas Higher Education Coordinating Board's (THECB) Higher Education Accountability System definitions calculate the number of FTE students by dividing the total number of undergraduate SCH by 15, master's SCH by 12, and doctoral SCH by 9.

This definition should be distinguished from the definition of a full-time student.

ETHNIC CATEGORIES OR ETHNIC ORIGIN

A code whereby student enrollment numbers are reported in the appropriate race/ethnic category. The ethnic categories used in the *Fact Book* are derived from the THECB definition of "enrollment disaggregated by ethnicity" as found in the online institutional resumes for Texas public universities. In order to make longitudinal comparisons, "Hispanic" students, except international ones, are counted as Hispanic. Students who are "Multi-racial" and claim African American as one ethnic category are included with the African American students. "Asian" includes Asian and Pacific Islanders. International Students are shown as a separate category.

STEM

An acronym referring to the academic disciplines of science, technology, engineering, and mathematics; particularly used when addressing education policy and curriculum choices used to improve competitiveness in science and technology development and/or workforce development. STEM data in the *Fact Book* corresponds to the definition of STEM fields in the THECB's *Closing the Gaps* and includes students in the following CIP codes: 11, 14, 15, 27, 40, and 30.01.

UNIVERSITY ENROLLMENT

TABLE 4. FALL ENROLLMENT NUMBERS, ACADEMIC YEARS 1932-2016

YEAR	ENROLLMENT	YEAR	ENROLLMENT	YEAR	ENROLLMENT
1931-1932	548	1960-1961	3,074	1989-1990	5,876
1932-1933	633	1961-1962	3,292	1990-1991	6,014
1933-1934	511	1962-1963	3,516	1991-1992	5,937
1934-1935	615	1963-1964	3,728	1992-1993	6,414
1935-1936	644	1964-1965	4,231	1993-1994	6,570
1936-1937	736	1965-1966	4,564	1994-1995	6,548
1937-1938	950	1966-1967	4,907	1995-1996	6,046
1938-1939	1,133	1967-1968	5,376	1996-1997	6,113
1939-1940	1,135	1968-1969	6,404	1997-1998	6,050
1940-1941	1,173	1969-1970	7,253	1998-1999	5,934
1941-1942	989	1970-1971*	7,817	1999-2000	5,832
1942-1943	663	1971-1972*	8,096	2000-2001	5,822
1943-1944	417	1972-1973	7,682	2001-2002†	5,905
1944-1945	443	1973-1974	6,896	2002-2003†	6,072
1945-1946	526	1974-1975	6,796	2003-2004†	6,156
1946-1947	1,720	1975-1976	7,572	2004-2005†	6,165
1947-1948	2,110	1976-1977	6,508	2005-2006†	5,782
1948-1949	2,100	1977-1978	6,600	2006-2007†	5,790
1949-1950	2,097	1978-1979	6,225	2007-2008†	5,578
1950-1951	1,876	1979-1980	6,060	2008-2009†	5,698
1951-1952	1,532	1980-1981	5,355	2009-2010	5,892
1952-1953	1,927	1981-1982	5,125	2010-2011	6,586
1953-1954	2,108	1982-1983	5,245	2011-2012	6,731
1954-1955	2,284	1983-1984	5,518	2012-2013	7,234
1955-1956	2,445	1984-1985	5,507	2013-2014*	7,730
1956-1957	2,701	1985-1986	5,115	2014-2015*	8,728
1957-1958	2,785	1986-1987	5,012	2015-2016*	9,207
1958-1959	2,872	1987-1988	5,393		
1959-1960	2,966	1988-1989	5,600		

* Texas A&M-Kingsville's five highest enrollment years.

† Although Texas A&M University-San Antonio was a part of Texas A&M-Kingsville from 2001-2008, this data only reflects Texas A&M-Kingsville's enrollment numbers.

UNIVERSITY ENROLLMENT (CONTINUED)

FIGURE 6. INCREASE IN ENROLLMENT, FALL SEMESTERS 2011-2015

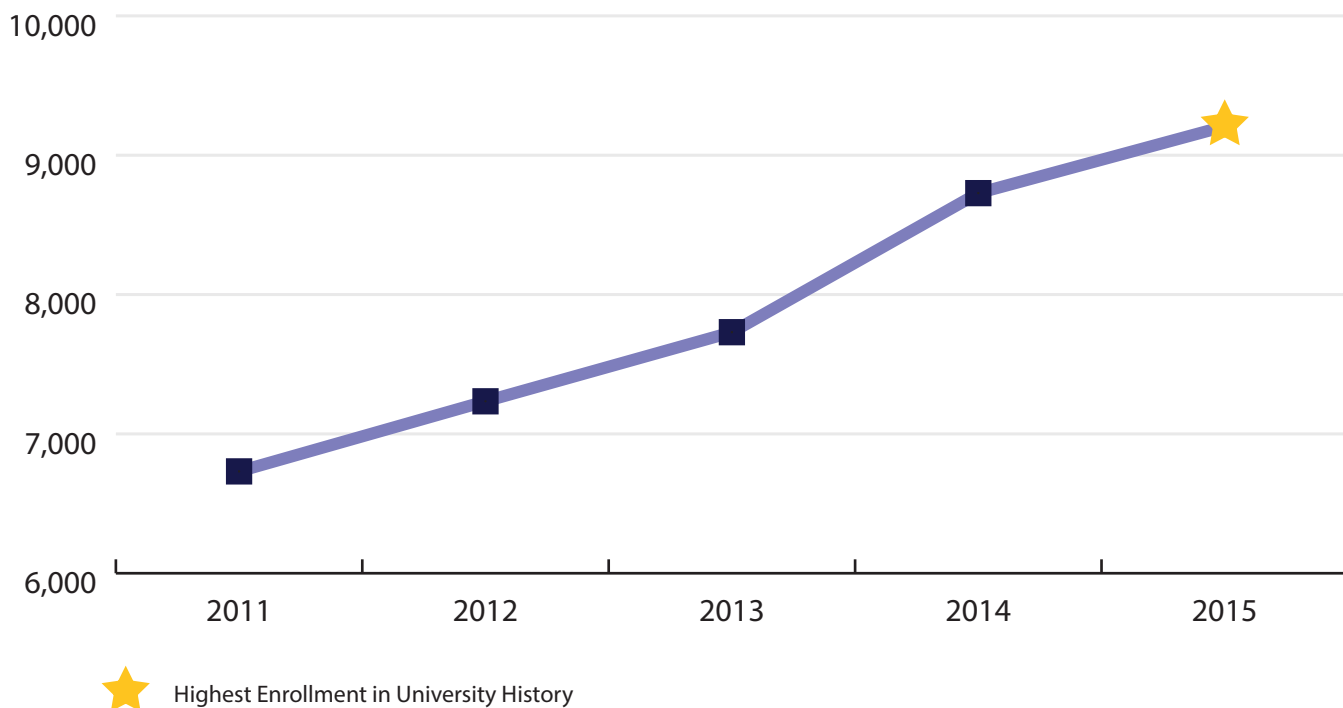


TABLE 5. TOTAL ENROLLMENT, FALL SEMESTERS 2011-2015

	FALL 2011	FALL 2012	FALL 2013	FALL 2014	FALL 2015
Enrollment	6,731	7,234	7,730	8,728	9,207

UNIVERSITY ENROLLMENT (CONTINUED)

FIGURE 7. ENROLLMENT BY COLLEGE, FALL SEMESTERS 2011-2015

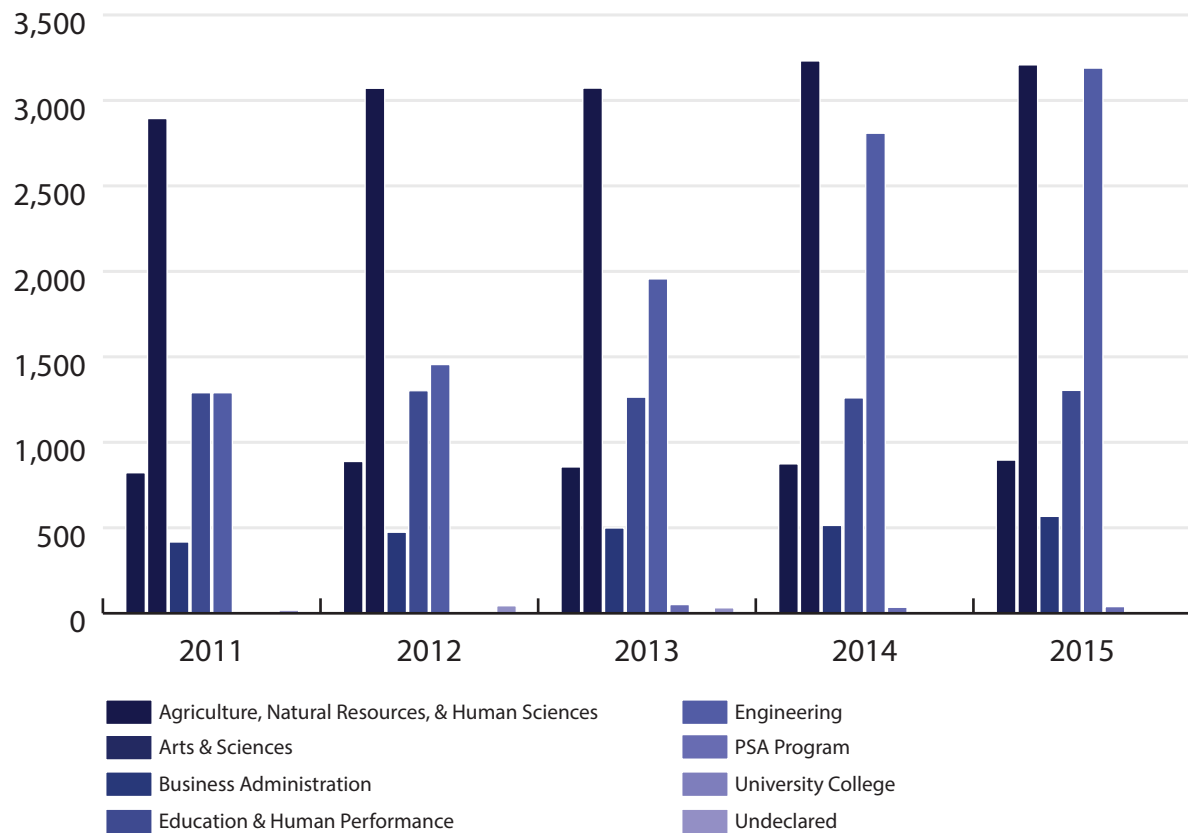


TABLE 6. ENROLLMENT BY COLLEGE, FALL SEMESTERS 2011-2015

COLLEGE/ PROGRAM	FALL 2011	FALL 2012	FALL 2013	FALL 2014	FALL 2015
College of Agriculture, Natural Resources, and Human Sciences	822	888	856	874	896
College of Arts & Sciences	2,894	3,071	3,072	3,231	3,208
College of Business Administration	417	474	499	514	567
College of Education & Human Performance	1,290	1,302	1,264	1,260	1,304
College of Engineering	1,290	1,455	1,956	2,808	3,189
PSA Program	0	0	51	35	39
Undeclared	18	44	32	6	4
Total	6,731	7,234	7,730	8,728	9,207

UNIVERSITY ENROLLMENT (CONTINUED)

FIGURE 8. ENROLLMENT BY LEVEL, FALL SEMESTERS 2011-2015

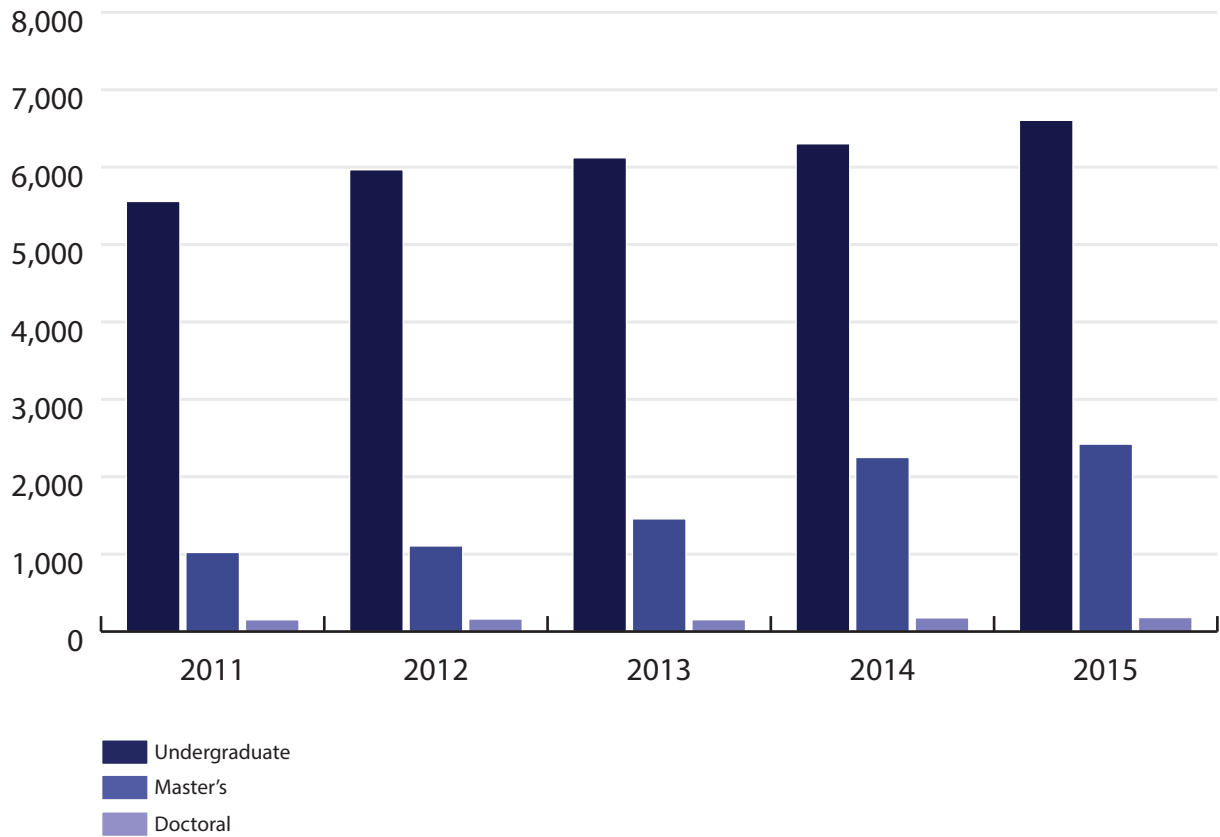
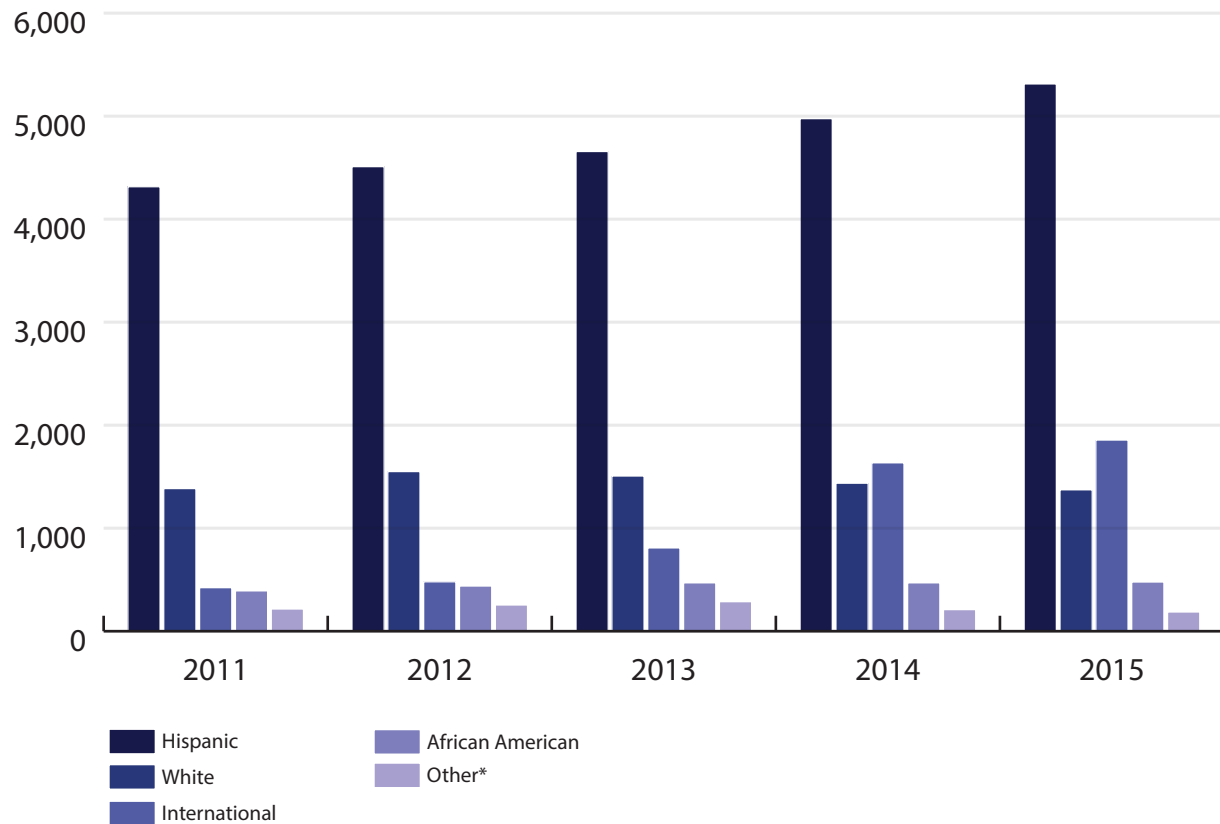


TABLE 7. FALL ENROLLMENT BY LEVEL, FALL SEMESTERS 2011-2015

Undergraduate	5,557	5,966	6,121	6,302	6,605
Master's	1,022	1,106	1,456	2,249	2,421
Doctoral	152	162	153	177	177
Total	6,731	7,234	7,730	8,728	9,207

UNIVERSITY ENROLLMENT (CONTINUED)

FIGURE 9. ENROLLMENT BY ETHNICITY, FALL SEMESTERS 2011-2015



Note: This table reflects the total number of students (both male and female) for each ethnic group.
*Other includes American Indian, Asian, Native Hawaiian, Multi-Racial, and Unknown.

TABLE 8. ENROLLMENT BY ETHNICITY, FALL SEMESTERS 2011-2015

ETHNICITY	FALL 2011	FALL 2012	FALL 2013	FALL 2014	FALL 2015
Hispanic	4,315	4,510	4,657	4,976	5,313
White	1,385	1,550	1,507	1,437	1,373
International	423	480	809	1,635	1,856
African American	392	439	470	470	478
Asian	31	58	65	78	83
American Indian	17	18	16	9	11
Multi-Racial	30	42	47	41	44
Hawaiian	7	8	11	10	8
Unknown	131	129	148	72	41
Total	6,731	7,234	7,730	8,728	9,207

UNIVERSITY ENROLLMENT (CONTINUED)

FIGURE 10. ENROLLMENT BY GENDER, FALL SEMESTERS 2011-2015

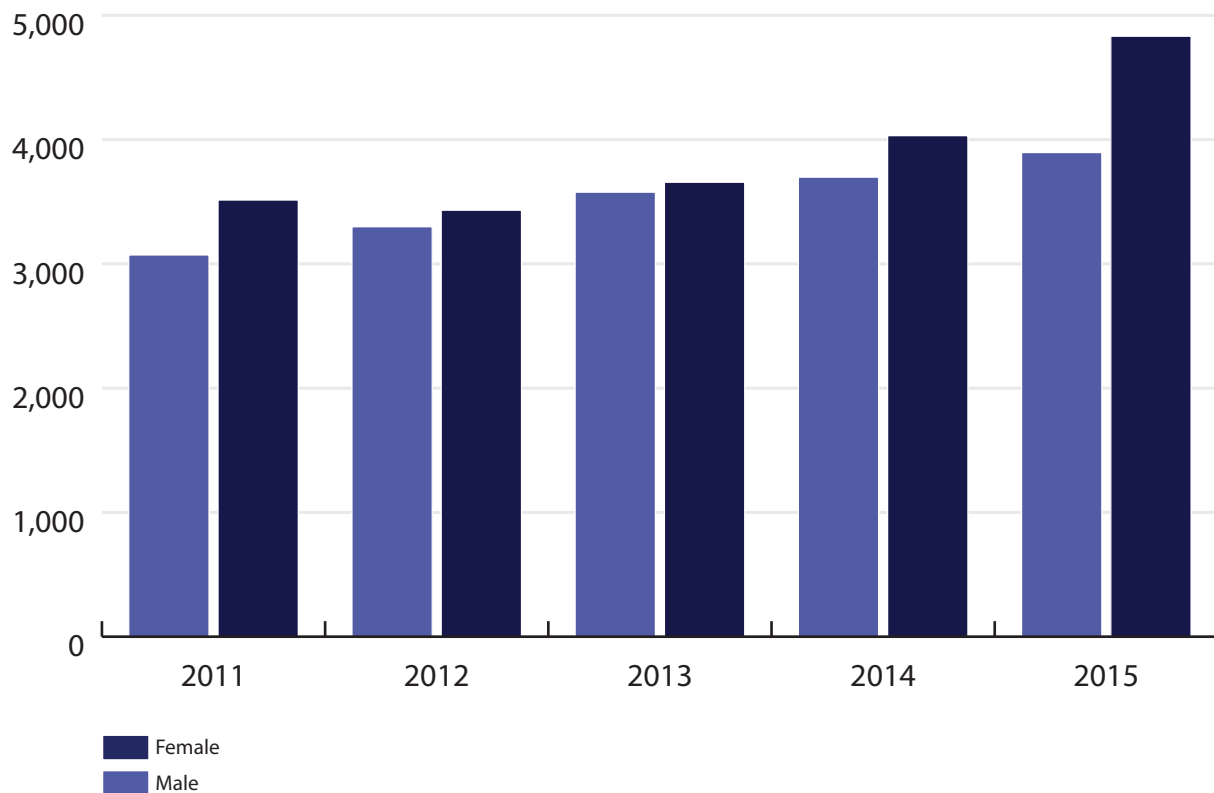


TABLE 9. ENROLLMENT BY GENDER, FALL SEMESTERS 2011-2015

GENDER	FALL 2011	FALL 2012	FALL 2013	FALL 2014	FALL 2015
Female	3,299	3,577	3,698	3,896	4,002
Male	3,432	3,657	4,032	4,832	5,205
Total	6,731	7,234	7,730	8,728	9,207

UNIVERSITY ENROLLMENT (CONTINUED)

FIGURE 11. ENROLLMENT BY AGE, FALL SEMESTERS 2011-2015

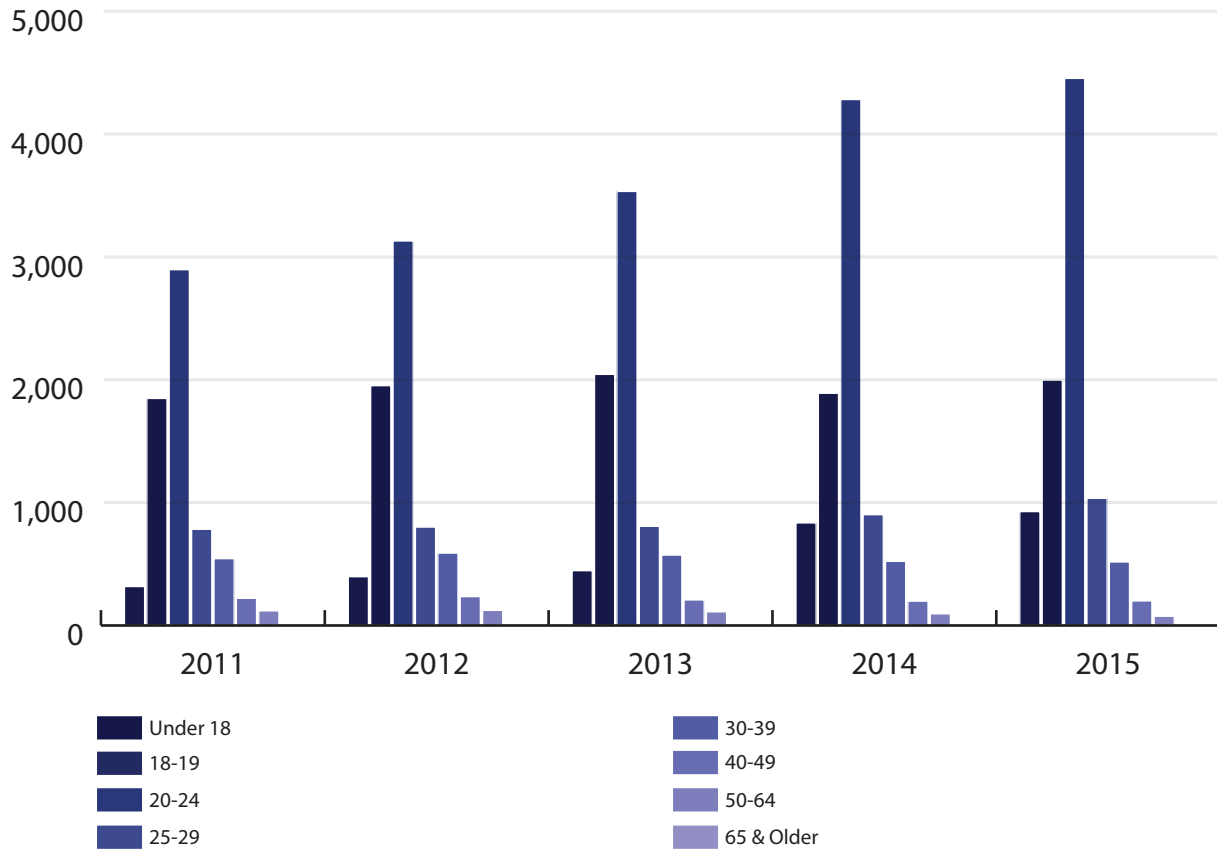


TABLE 10. ENROLLMENT BY AGE, FALL SEMESTERS 2011-2015

AGE	FALL 2011	FALL 2012	FALL 2013	FALL 2014	FALL 2015
Under 18	317	397	446	835	927
18-19	1,848	1,952	2,044	1,890	1,997
20-24	2,896	3,130	3,532	4,279	4,453
25-29	783	801	808	903	1,035
30-39	544	589	573	523	517
40-49	221	235	208	198	200
50-64	119	123	111	95	75
65 & Older	3	7	8	5	3
Total	6,731	7,234	7,730	8,728	9,207

TOP MAJORS

TABLE 11. TOP TEN UNDERGRADUATE MAJORS, FALL SEMESTERS 2011-2015

2011		2012		2013		2014		2015	
Kinesiology	519	Kinesiology	500	Liberal Arts	608	Liberal Arts	1,016	Liberal Arts	1,077
Liberal Arts	412	Liberal Arts	495	Kinesiology	471	Kinesiology	474	Kinesiology	504
Comm. Sciences & Disorders	409	Comm. Sciences & Disorders	492	Comm. Sciences & Disorders	406	Biomedical Sciences	327	Interdisciplinary Studies	359
Biomedical Sciences	361	Interdisciplinary Studies	357	Interdisciplinary Studies	340	Interdisciplinary Studies	322	Biomedical Sciences	340
Interdisciplinary Studies	332	Biomedical Sciences	354	Biomedical Sciences	337	Criminology	280	Pre-Engineering	335
Criminology	274	Criminology	306	Criminology	314	Comm. Sciences & Disorders	279	Animal Science	284
Psychology	196	Psychology	218	Pre-Engineering	248	Pre-Engineering	276	Mechanical Engineering	266
Music	183	Mechanical Engineering	203	Mechanical Engineering	242	Mechanical Engineering	251	Criminology	242
Range & Wildlife Management	182	Pre-Engineering	199	Psychology	234	Animal Science	242	Chemical Engineering	228
Mechanical Engineering	181	Animal Science	185	Animal Science	230	Psychology	217	Comm. Sciences & Disorders	202

TABLE 12. TOP TEN GRADUATE MAJORS, FALL SEMESTERS 2011-2015

FALL 2011		FALL 2012		FALL 2013		FALL 2014		FALL 2015	
Major	Count	Major	Count	Major	Count	Major	Count	Major	Count
Educational Administration	111	Computer Science	114	Computer Science	243	Computer Science	590	Computer Science	591
Electrical Engineering	91	Electrical Engineering	99	Electrical Engineering	213	Electrical Engineering	427	Electrical Engineering	514
Guidance & Counseling	90	Guidance & Counseling	92	Guidance & Counseling	97	Mechanical Engineering	165	Mechanical Engineering	211
Computer Science	80	Educational Administration	89	Business	81	Guidance & Counseling	121	Guidance & Counseling	122
Educational Leadership	66	Educational Leadership	77	Educational Leadership	77	Industrial Engineering	88	Industrial Engineering	110
Bilingual Education	60	Bilingual Education	62	Mechanical Engineering	65	Business	82	Business	89
Environmental Engineering	56	Environmental Engineering	56	Educational Administration	62	Civil Engineering	81	Civil Engineering	77
Mechanical Engineering	42	Business	51	Civil Engineering	61	Educational Leadership	79	Educational Leadership	76
Psychology	40	Comm. Sciences & Disorders	42	Environmental Engineering	61	Environmental Engineering	67	Industrial Management Engineering	64
Human Sciences	39	Civil Engineering	41	Bilingual Education	57	Bilingual Education	62	Environmental Engineering	60

DEGREES GRANTED

FIGURE 12. DEGREES GRANTED BY COLLEGE, ACADEMIC YEARS 2012-2016

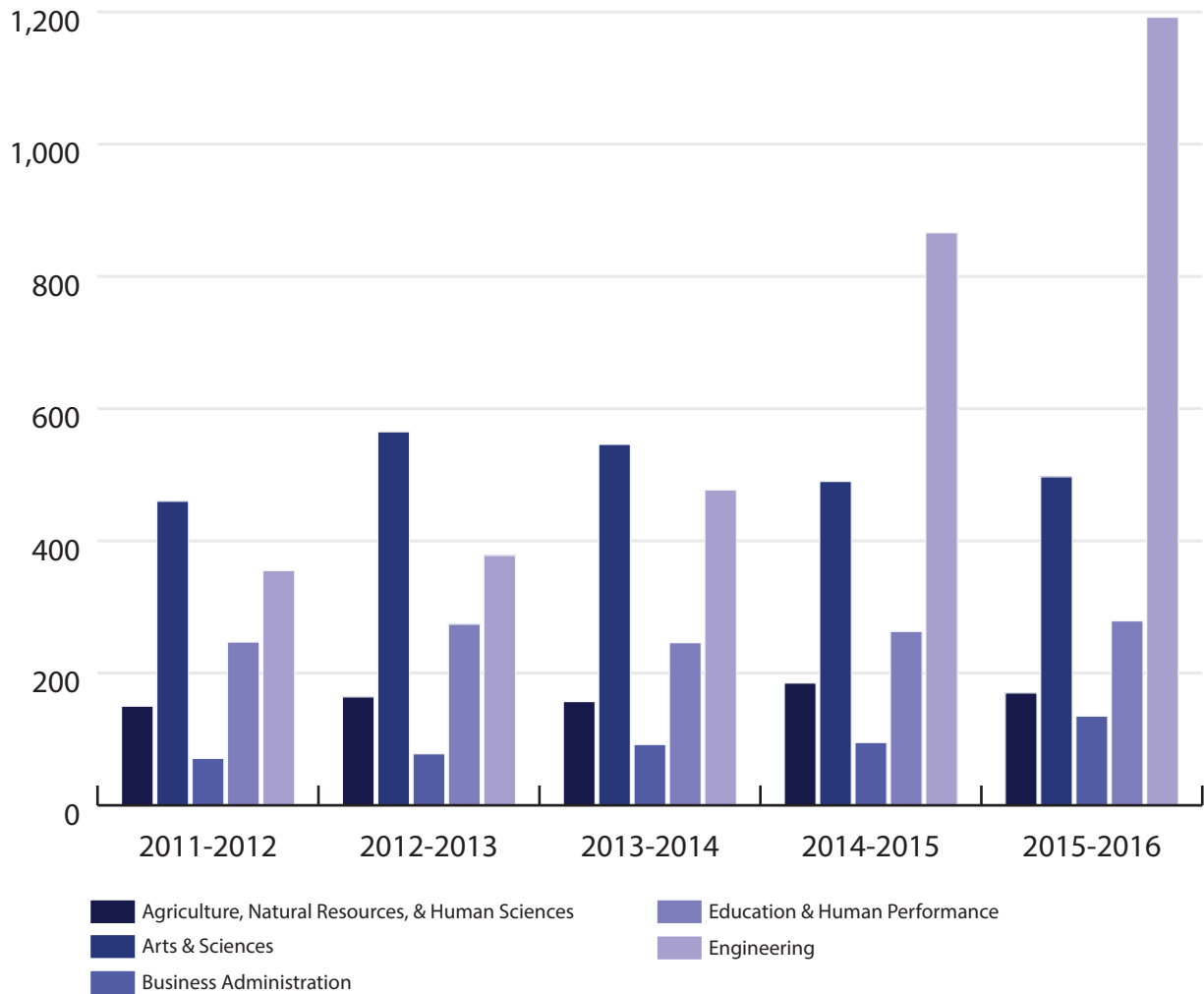


TABLE 13. DEGREES GRANTED BY COLLEGE, ACADEMIC YEARS 2012-2016

COLLEGE/ PROGRAM	2011-2012	2012-2013	2013-2014	2014-2015	2015-2016
College of Agriculture, Natural Resources, and Human Sciences	150	164	157	185	170
College of Arts & Sciences	460	565	546	490	479
College of Business Administration	71	78	92	98	135
College of Education & Human Performance	247	274	246	263	278
College of Engineering	355	378	477	867	1,192
Total	1,283	1,459	1,518	1,903	2,254

DEGREES GRANTED (CONTINUED)

FIGURE 13. DEGREES GRANTED BY LEVEL, ACADEMIC YEARS 2012-2016

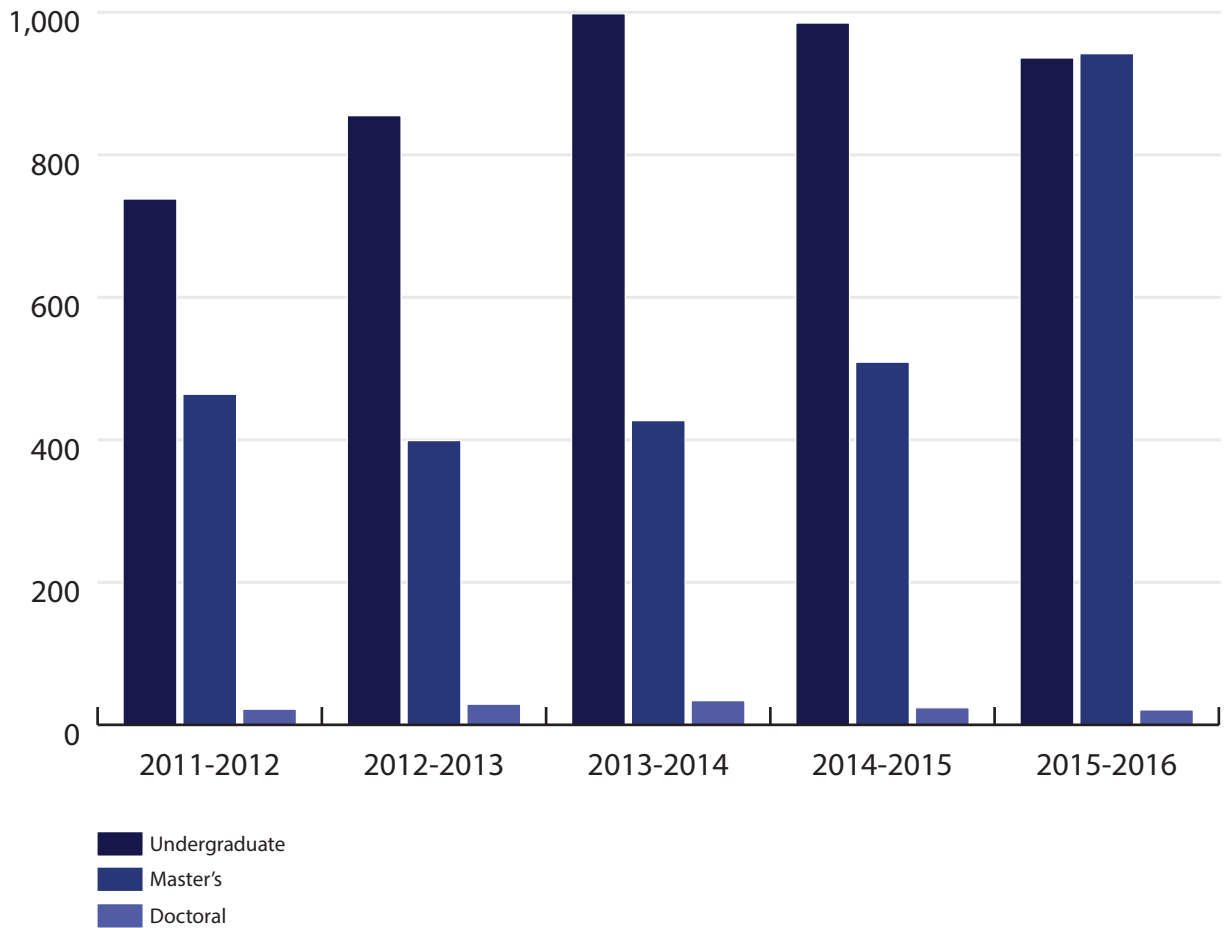
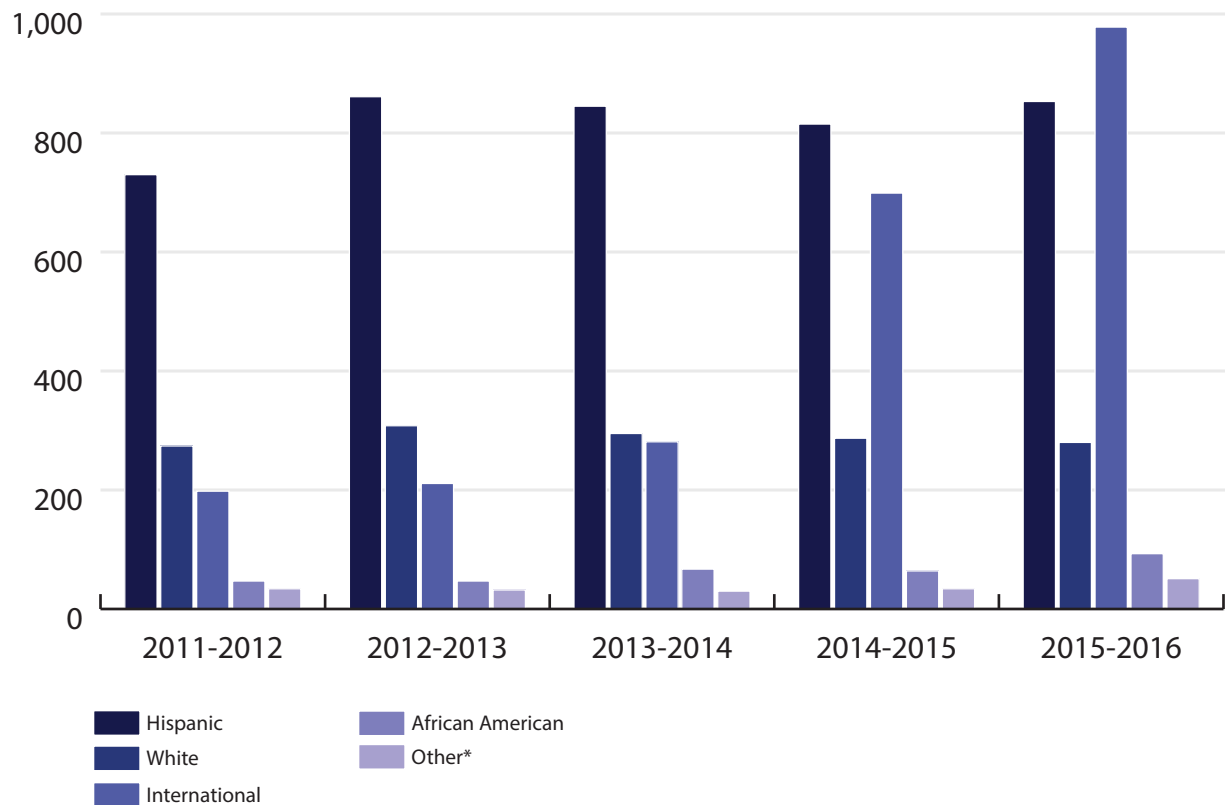


TABLE 14. DEGREES GRANTED BY LEVEL, ACADEMIC YEARS 2012-2016

LEVEL	2011-2012	2012-2013	2013-2014	2014-2015	2015-2016
Undergraduate	855	998	985	937	988
Master's	399	427	509	945	1,228
Doctoral	29	34	24	21	38
Total	1,283	1,459	1,518	1,903	2,254

DEGREES GRANTED (CONTINUED)

FIGURE 14. DEGREES GRANTED BY ETHNICITY, ACADEMIC YEARS 2012-2016



*Other includes American Indian, Asian, Native Hawaiian, Multi-Racial, and Unknown.

TABLE 15. DEGREES GRANTED BY ETHNICITY, ACADEMIC YEARS 2012-2016

ETHNICITY	2011-2012	2012-2013	2013-2014	2014-2015	2015-2016
Hispanic	730	861	845	819	853
White	274	308	295	288	282
International	198	210	281	698	977
African American	47	47	67	64	92
Asian	4	12	9	15	20
American Indian	1	4	3	2	2
Multi-Racial	5	2	8	6	15
Hawaiian	0	0	3	0	2
Unknown	24	15	7	11	11
Total	1,283	1,459	1,518	1,903	2,254

DEGREES GRANTED (CONTINUED)

FIGURE 15. DEGREES GRANTED BY GENDER, ACADEMIC YEARS 2012-2016

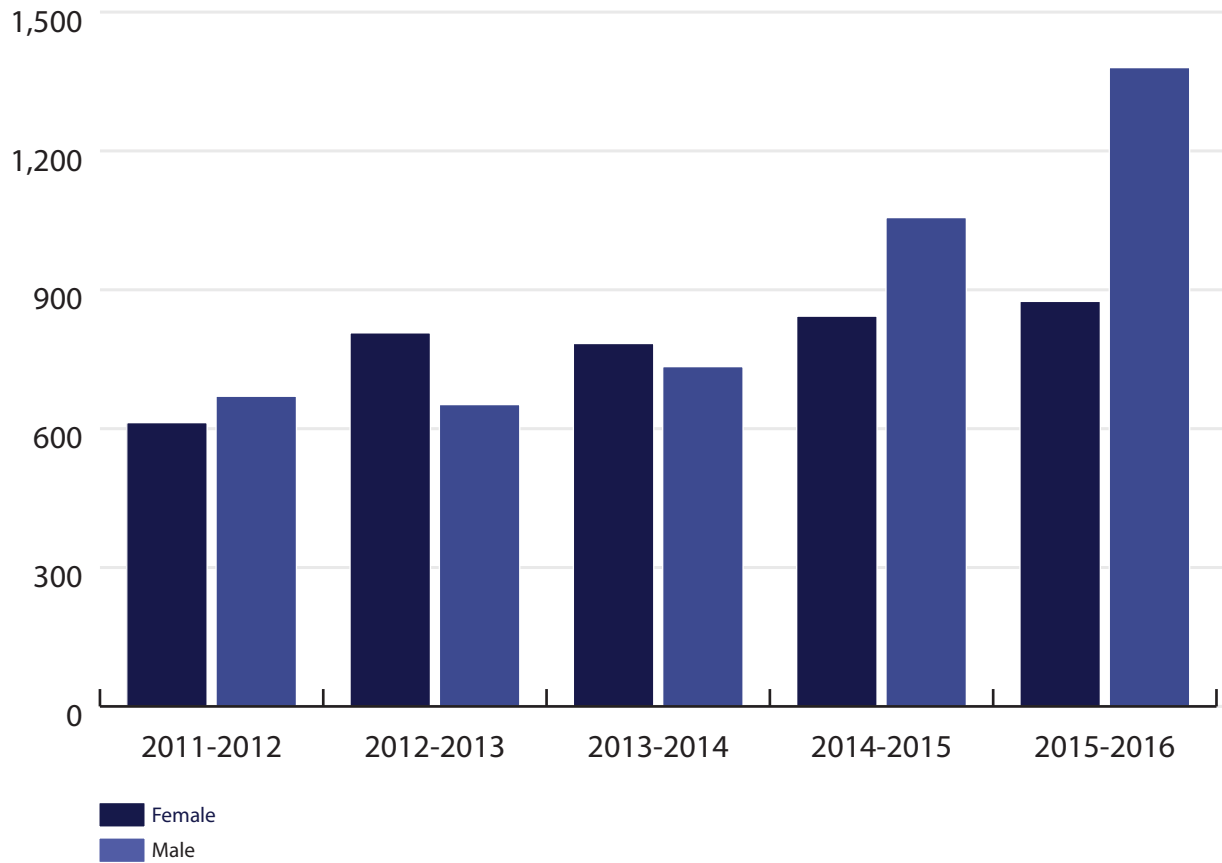


TABLE 16. DEGREES GRANTED BY GENDER, ACADEMIC YEARS 2012-2016

GENDER	2011-2012	2012-2013	2013-2014	2014-2015	2015-2016
Female	613	807	784	844	875
Male	670	652	734	1,059	1,379
Total	1,283	1,459	1,518	1,903	2,254

DEGREES GRANTED (CONTINUED)

FIGURE 16. STEM DEGREES GRANTED BY LEVEL, ACADEMIC YEARS 2012-2016

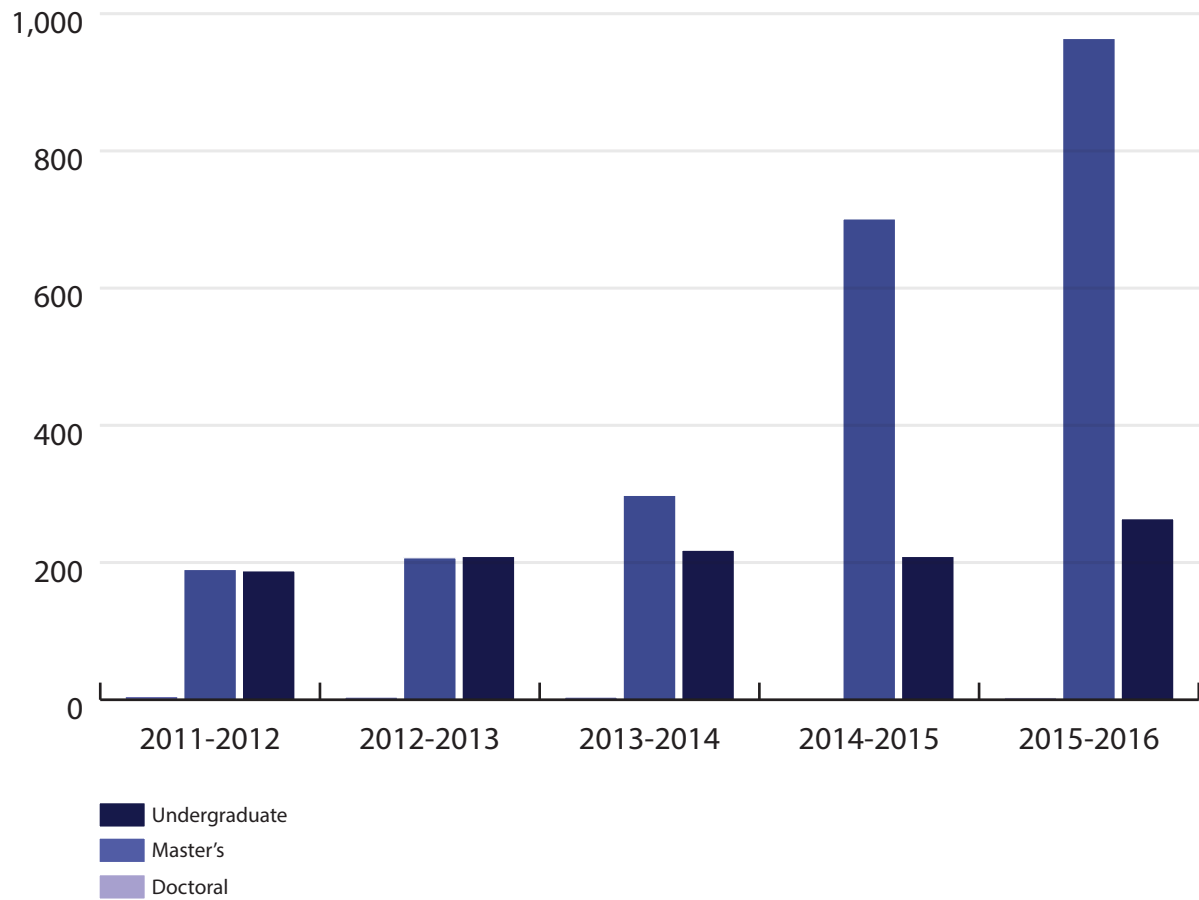


TABLE 17. STEM DEGREES GRANTED BY LEVEL, ACADEMIC YEARS 2012-2016

LEVEL	2011-2012	2012-2013	2013-2014	2014-2015	2015-2016
Undergraduate	188	209	218	210	264
Master's	190	207	298	701	964
Doctoral	5	4	4	0	3
Total	383	420	520	911	1,231

SEMESTER CREDIT HOURS

FIGURE 17. TOTAL SEMESTER CREDIT HOURS BY COLLEGE, ACADEMIC YEARS 2012-2016

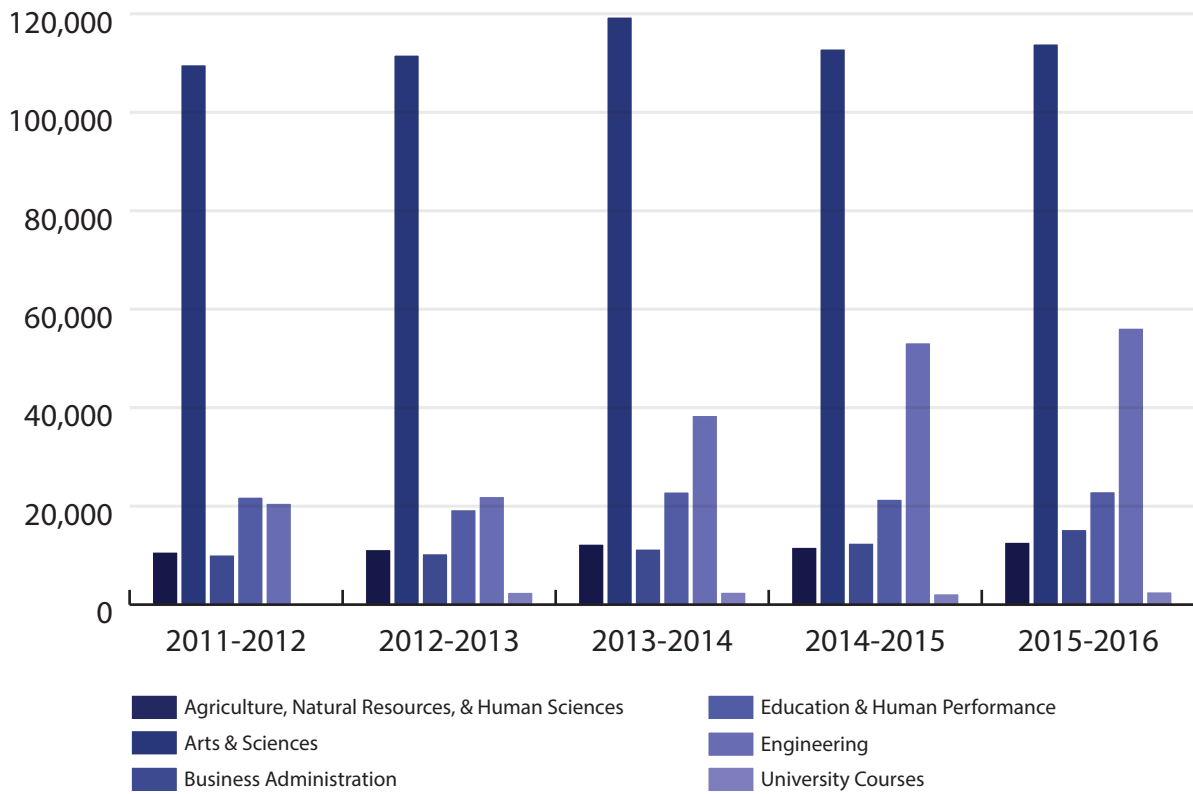


TABLE 18. TOTAL SEMESTER CREDIT HOURS BY COLLEGE, ACADEMIC YEARS 2012-2016

COLLEGE/ PROGRAM	2011-2012	2012-2013	2013-2014	2014-2015	2015-2016
College of Agriculture, Natural Resources, and Human Sciences	10,702	11,209	12,311	11,661	12,687
College of Arts & Sciences	109,673	111,646	119,374	112,886	113,909
College of Business Administration	10,119	10,363	11,318	12,509	15,279
College of Education & Human Performance	21,859	19,309	22,909	21,426	22,967
College of Engineering	20,603	21,988	38,443	53,209	56,177
University Courses	85	2,522	2,542	2,232	2,623
Total	173,041	177,037	206,897	213,923	223,642

SEMESTER CREDIT HOURS (CONTINUED)

FIGURE 18. SEMESTER CREDIT HOURS BY LEVEL, ACADEMIC YEARS 2012-2016

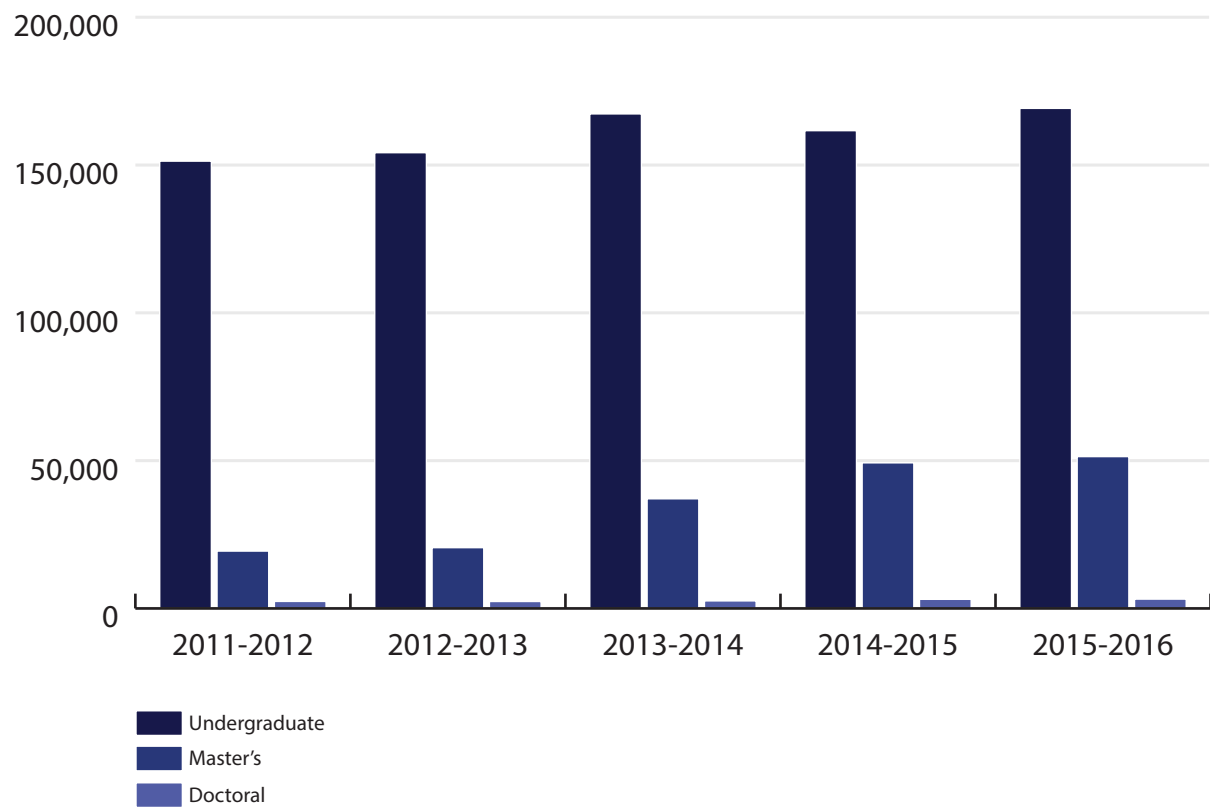


TABLE 19. SEMESTER CREDIT HOURS BY LEVEL, ACADEMIC YEARS 2012-2016

LEVEL	2011-2012	2012-2013	2013-2014	2014-2015	2015-2016
Undergraduate	151,299	154,163	167,284	161,613	169,160
Master's	19,381	20,542	37,074	49,237	51,349
Doctoral	2,361	2,332	2,539	3,073	3,133
Total	173,041	177,037	206,897	213,923	223,642

UNDERGRADUATE GRADE POINT AVERAGES

FIGURE 19. AVERAGE UNDERGRADUATE SEMESTER GPA BY LEVEL, FALL SEMESTERS 2011-2015

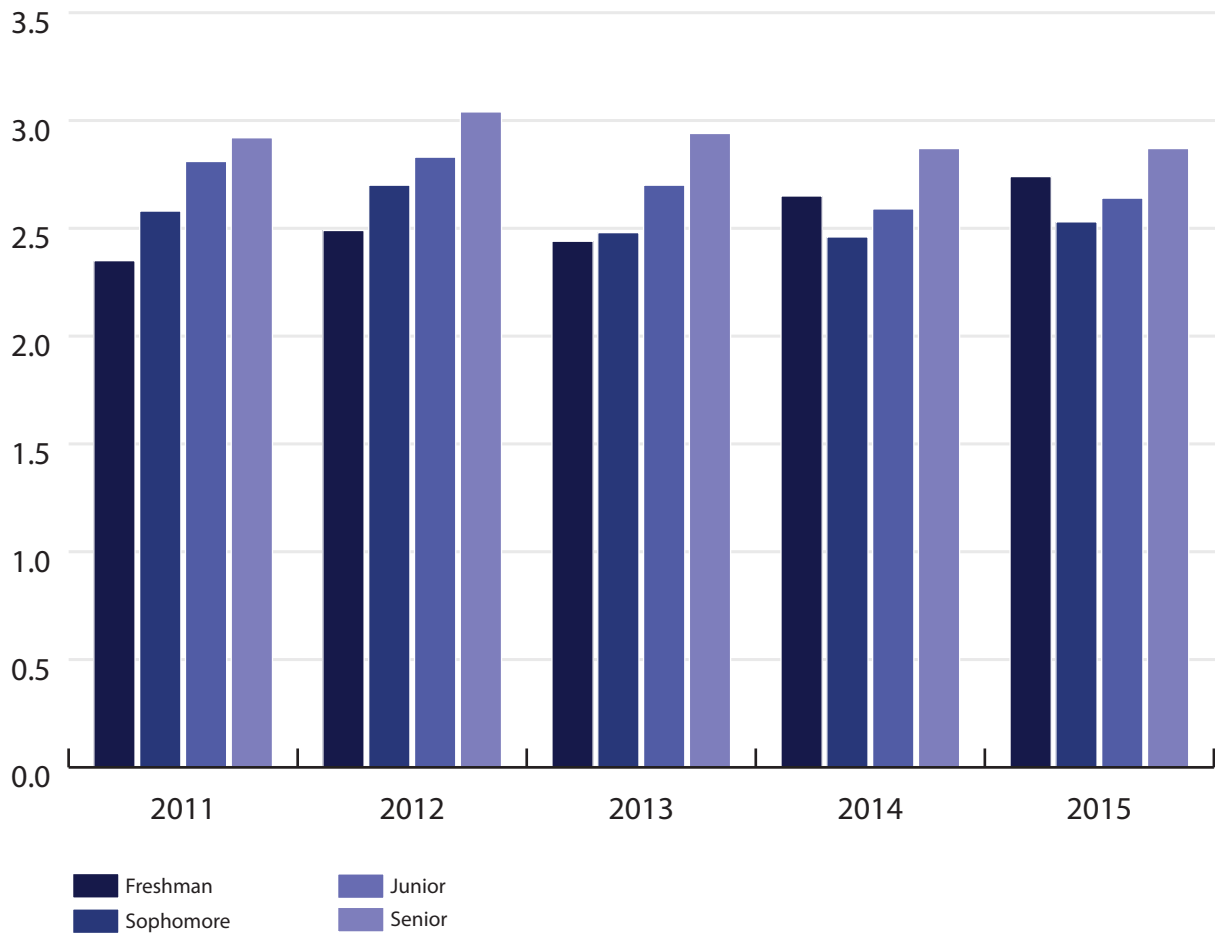


TABLE 20. AVERAGE UNDERGRADUATE SEMESTER GPA BY LEVEL, FALL SEMESTERS 2011-2015

LEVEL	FALL 2011	FALL 2012	FALL 2013	FALL 2014	FALL 2015
Freshman	2.35	2.49	2.44	2.65	2.74
Sophomore	2.58	2.70	2.48	2.46	2.53
Junior	2.81	2.83	2.70	2.59	2.64
Senior	2.92	3.04	2.94	2.87	2.87

UNDERGRADUATE COHORT

FIGURE 20. UNDERGRADUATE COHORT 1-YEAR RETENTION RATE, FALL SEMESTERS 2010-2014

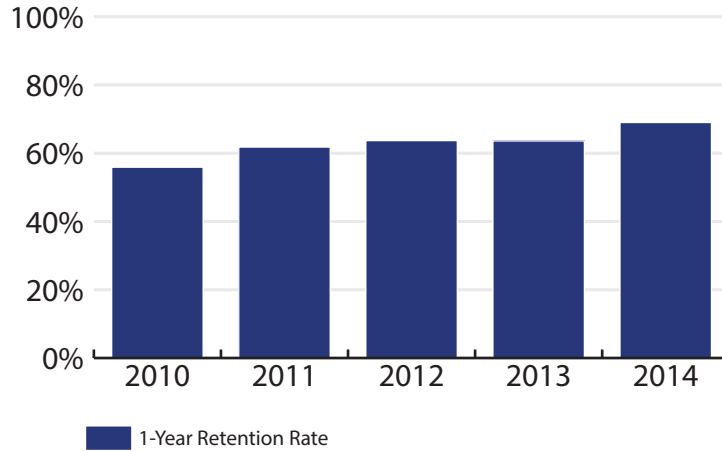


TABLE 21. UNDERGRADUATE COHORT 1-YEAR RETENTION RATE, FALL SEMESTERS 2010-2014

Year	1-Year Retention Rate
2010	55.90%
2011	61.80%
2012	63.70%
2013	63.60%
2014	69.0%

FIGURE 21. UNDERGRADUATE COHORT 6-YEAR GRADUATION RATE, FALL SEMESTERS 2006-2010

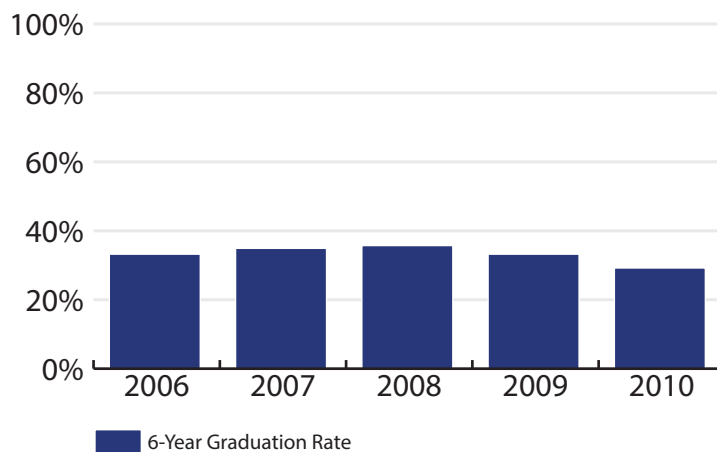


TABLE 22. UNDERGRADUATE COHORT 6-YEAR GRADUATION RATE, FALL SEMESTERS 2006-2010

Year	6-Year Graduation Rate
FALL 2006	33.20%
FALL 2007	34.90%
FALL 2008	35.70%
FALL 2009	33.20%
FALL 2010	29.2%

STUDENT DEMOGRAPHICS

TABLE 23. TOP TEN COUNTIES OF ORIGIN FOR IN-STATE UNDERGRADUATE & GRADUATE STUDENTS, FALL 2011-2015

FALL 2011		FALL 2012		FALL 2013		FALL 2014		FALL 2015	
County	Count	County	Count	County	Count	County	Count	County	Count
Nueces	971	Nueces	1,035	Nueces	1,136	Nueces	1,138	Hidalgo	1,163
Kleberg	867	Hidalgo	982	Hidalgo	1,005	Hidalgo	1,015	Nueces	1,025
Hidalgo	822	Kleberg	838	Kleberg	795	Cameron	779	Cameron	969
Cameron	482	Cameron	591	Cameron	619	Kleberg	755	Kleberg	776
Jim Wells	396	Jim Wells	401	Harris	348	Harris	345	Harris	357
Bexar	294	Bexar	347	Jim Wells	335	Jim Wells	328	Bexar	299
San Patricio	248	San Patricio	215	Bexar	331	Bexar	298	Jim Wells	295
Harris	191	Harris	212	San Patricio	200	San Patricio	251	San Patricio	243
Starr	150	Duval	141	Starr	150	Willacy	194	Willacy	197
Duval	137	Webb	135	Webb	139	Webb	136	Starr	144

TABLE 24. TOP FIVE STATES OF ORIGIN FOR OUT-OF-STATE UNDERGRADUATE & GRADUATE STUDENTS, FALL 2011-2015

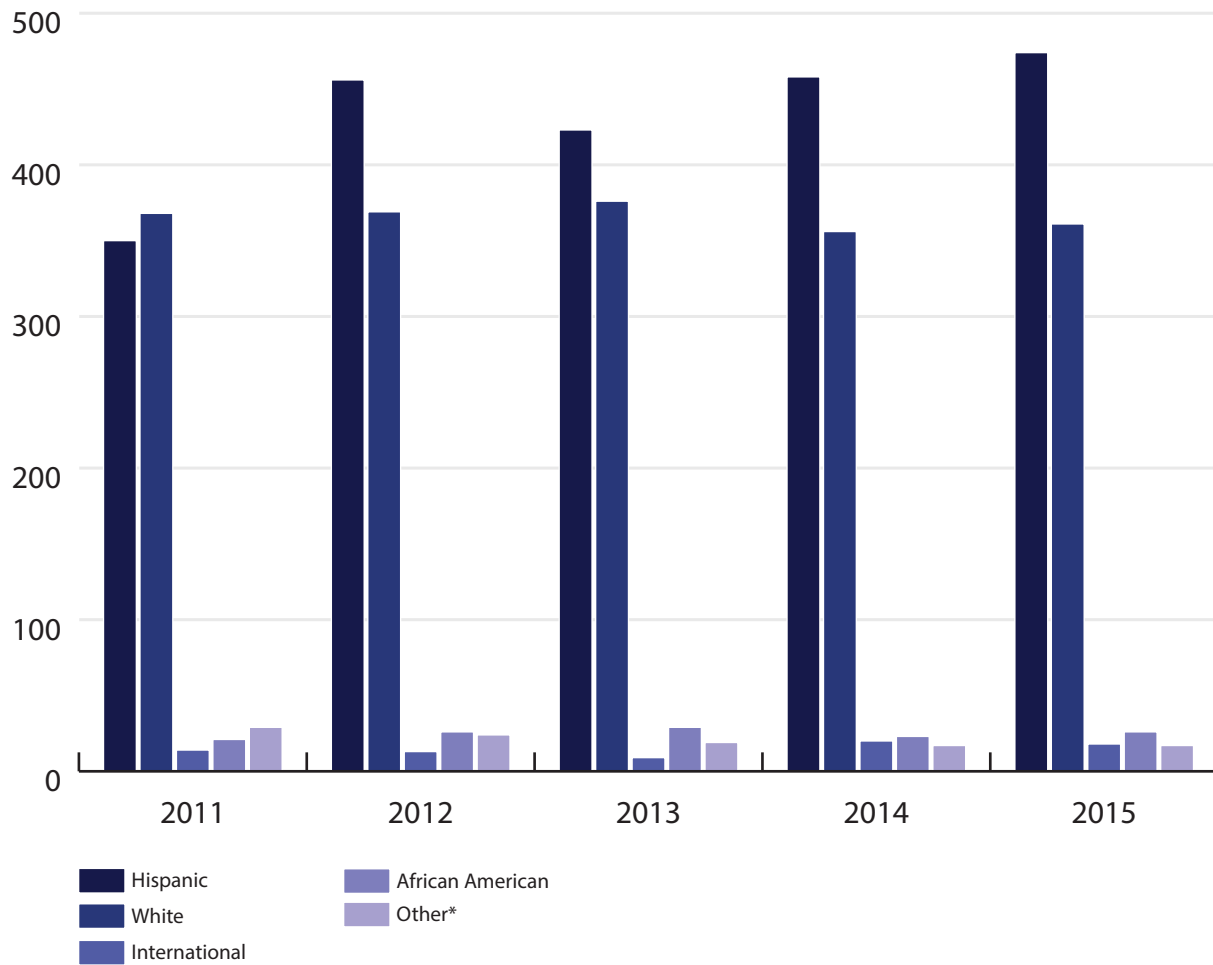
FALL 2011		FALL 2012		FALL 2013		FALL 2014		FALL 2015	
State	Count	State	Count	State	Count	State	Count	State	Count
California	28	California	27	California	25	California	26	California	31
Florida	17	Ohio	13	Florida	13	New York	13	New York	11
Michigan	11	Florida	11	New York	12	Florida	9	Georgia	9
New York	8	Missouri	10	Ohio	7	Georgia	9	Virginia	6
Pennsylvania	6	New York	8	Georgia	7	Indiana	7	Florida	5

TABLE 25. TOP FIVE COUNTRIES OF ORIGIN FOR INTERNATIONAL UNDERGRADUATE & GRADUATE STUDENTS, FALL 2011-2015

FALL 2011		FALL 2012		FALL 2013		FALL 2014		FALL 2015	
Country	Count	Country	Count	Country	Count	Country	Count	Country	Count
India	261	India	253	India	570	India	1,354	India	1,537
Mexico	53	Mexico	50	Nigeria	51	Nigeria	61	Nigeria	64
Nigeria	24	Nigeria	35	Mexico	42	Mexico	57	Mexico	56
China	16	China	18	China	20	China	22	Saudi Arabia	48
Taiwan	11	Taiwan	11	Saudi Arabia	18	Bangladesh	15	China	20

STUDENT DEMOGRAPHICS (CONTINUED)

FIGURE 22. DEMOGRAPHICS FOR THE COLLEGE OF AGRICULTURE, NATURAL RESOURCES, & HUMAN SCIENCES, FALL SEMESTERS 2011-2015



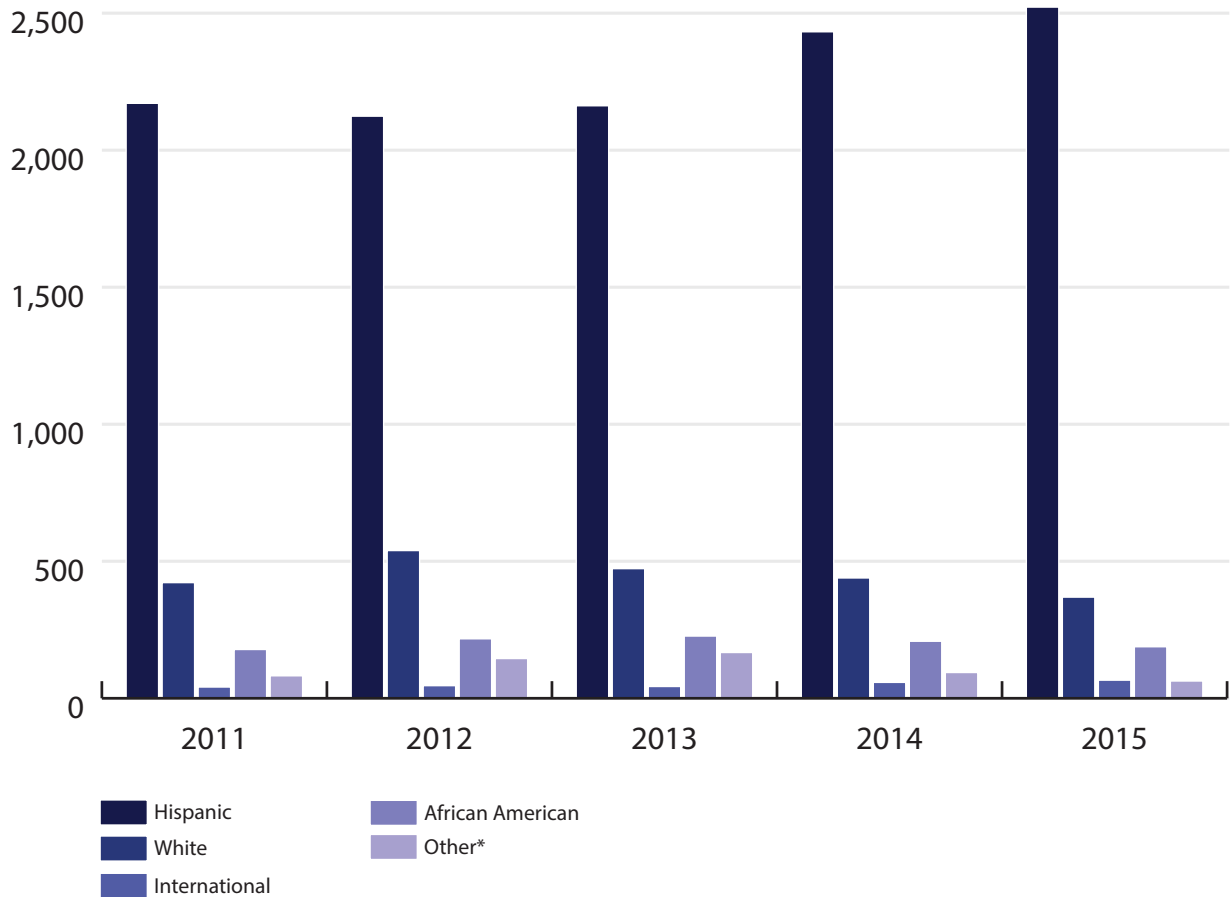
Note: This table reflects the total number of students (both male and female) for each ethnic group.
*Other includes American Indian, Asian, Native Hawaiian, Multi-Racial, and Unknown.

TABLE 26. DEMOGRAPHICS FOR THE COLLEGE OF AGRICULTURE, NATURAL RESOURCES, & HUMAN SCIENCES, FALL SEMESTERS 2011-2015

ETHNICITY	FALL 2011		FALL 2012		FALL 2013		FALL 2014		FALL 2015	
	Female	Male	Female	Male	Female	Male	Female	Male	Female	Male
Hispanic	224	166	281	175	272	151	288	170	307	167
White	145	223	154	215	164	212	161	195	178	183
International	6	8	7	6	6	3	11	9	8	10
African American	7	14	12	14	17	12	20	3	20	6
American Indian	3	1	1	1	1	1	0	1	1	0
Asian	4	0	6	0	5	1	5	1	1	1
Hawaiian	1	0	1	1	0	0	0	0	0	0
Multi-Racial	2	4	4	3	3	2	6	1	5	4
Unknown	7	7	5	2	2	4	0	3	3	2
Total	399	423	471	417	470	386	491	383	523	373
Grand Total	822		888		856		874		851	

STUDENT DEMOGRAPHICS (CONTINUED)

FIGURE 23. DEMOGRAPHICS FOR THE COLLEGE OF ARTS & SCIENCES, FALL SEMESTERS 2011-2015



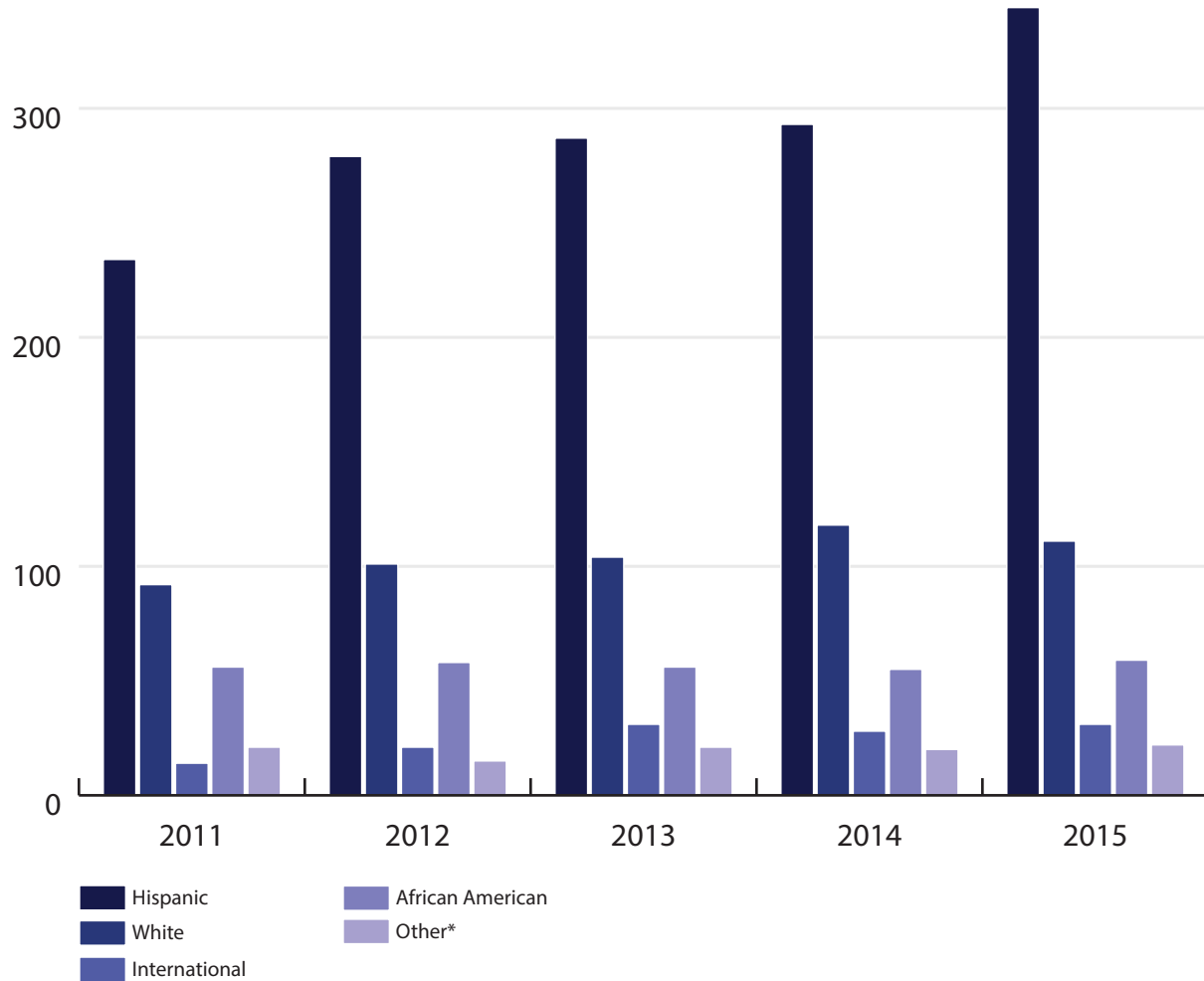
Note: This table reflects the total number of students (both male and female) for each ethnic group.
*Other includes American Indian, Asian, Native Hawaiian, Multi-Racial, and Unknown.

TABLE 27. DEMOGRAPHICS FOR THE COLLEGE OF ARTS & SCIENCES, FALL SEMESTERS 2011-2015

ETHNICITY	FALL 2011		FALL 2012		FALL 2013		FALL 2014		FALL 2015	
	Female	Male	Female	Male	Female	Male	Female	Male	Female	Male
Hispanic	1,324	847	1,309	815	1,303	859	1,412	1,020	1,459	1,063
White	235	187	300	239	267	206	240	199	185	184
International	22	19	27	19	22	21	27	31	33	33
African American	71	107	97	120	100	127	91	117	88	100
American Indian	5	2	7	3	3	4	2	4	3	3
Asian	4	4	12	12	13	10	10	15	15	12
Hawaiian	1	0	2	0	1	3	1	5	2	3
Multi-Racial	8	5	9	10	11	8	7	5	7	3
Unknown	25	28	47	43	70	44	27	18	8	7
Total	1,695	1,199	1,810	1,261	1,790	1,282	1,817	1,414	1,800	1,408
Grand Total	2,894		3,071		3,072		3,231		3,208	

STUDENT DEMOGRAPHICS (CONTINUED)

FIGURE 24. DEMOGRAPHICS FOR THE COLLEGE OF BUSINESS ADMINISTRATION, FALL SEMESTERS 2011-2015



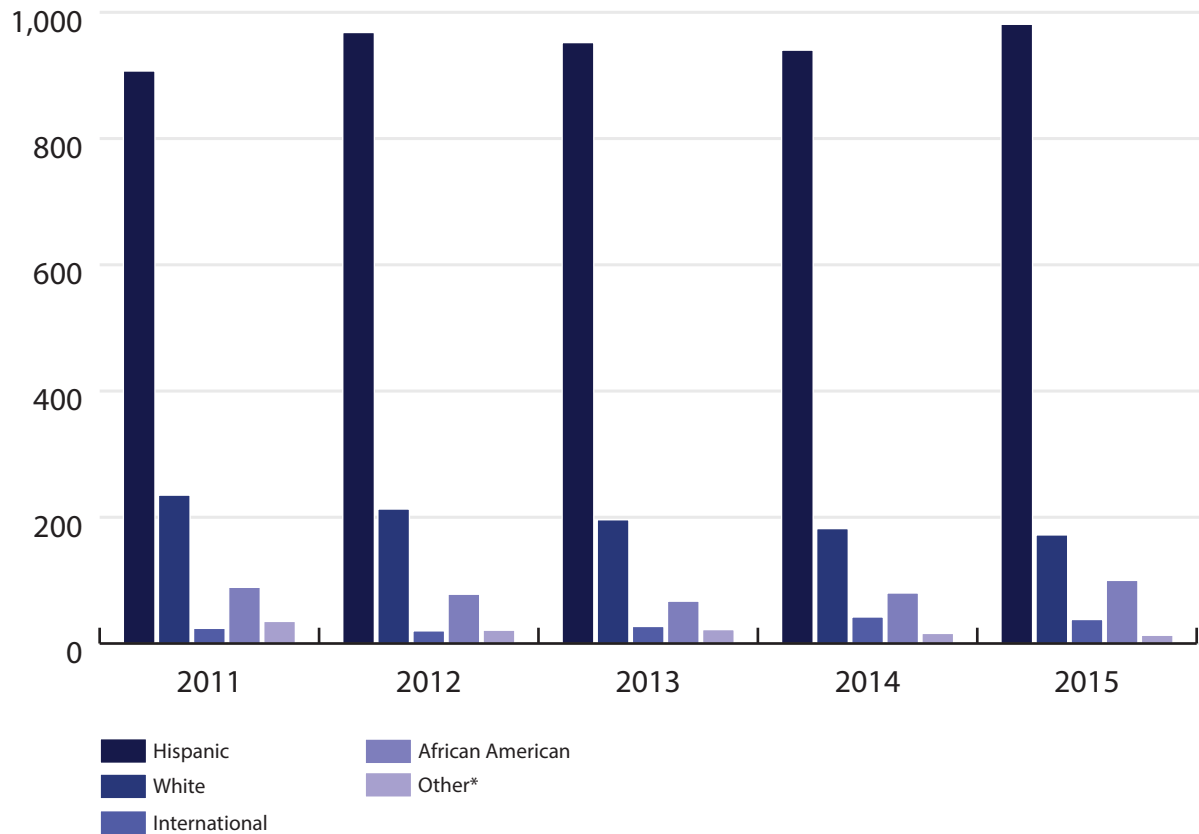
Note: This table reflects the total number of students (both male and female) for each ethnic group.
*Other includes American Indian, Asian, Native Hawaiian, Multi-Racial, and Unknown.

TABLE 28. DEMOGRAPHICS FOR THE COLLEGE OF BUSINESS ADMINISTRATION, FALL SEMESTERS 2011-2015

ETHNICITY	FALL 2011		FALL 2012		FALL 2013		FALL 2014		FALL 2015	
	Female	Male	Female	Male	Female	Male	Female	Male	Female	Male
Hispanic	95	139	123	156	124	163	135	158	159	185
White	33	59	41	60	46	58	46	72	44	67
International	5	9	8	13	11	20	6	22	11	20
African American	10	46	10	48	15	41	15	40	12	47
American Indian	0	1	1	2	1	2	0	0	0	0
Asian	3	0	2	2	3	4	6	5	4	8
Hawaiian	0	1	0	2	1	1	0	0	0	0
Multi-Racial	0	2	0	2	0	4	1	3	1	5
Unknown	2	12	1	3	2	3	2	3	1	3
Total	148	269	186	288	203	296	211	303	232	335
Grand Total	417		474		499		514		567	

STUDENT DEMOGRAPHICS (CONTINUED)

FIGURE 25. DEMOGRAPHICS FOR THE COLLEGE OF EDUCATION & HUMAN PERFORMANCE, FALL SEMESTERS 2011-2015



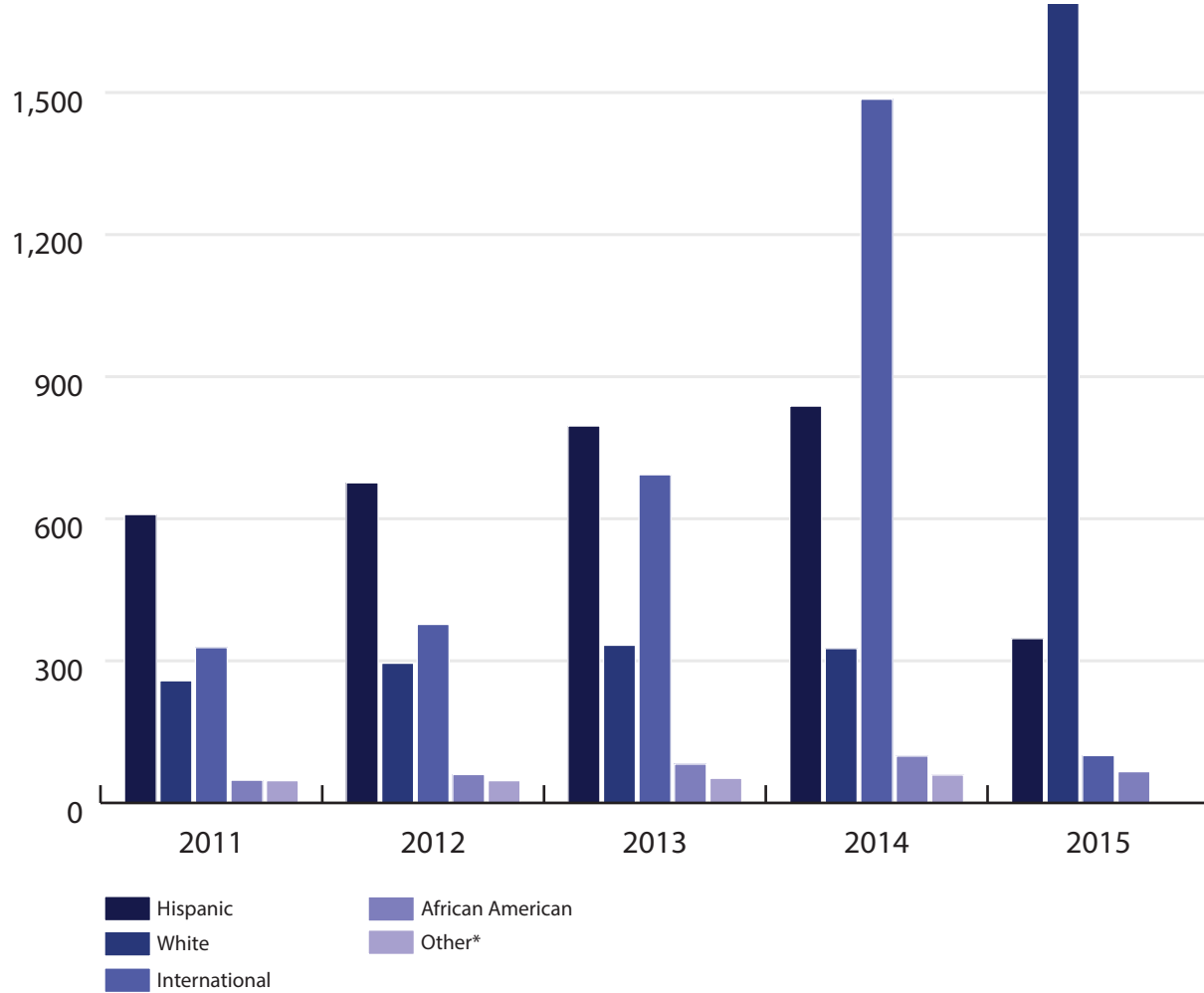
Note: This table reflects the total number of students (both male and female) for each ethnic group.
*Other includes American Indian, Asian, Native Hawaiian, Multi-Racial, and Unknown.

TABLE 29. DEMOGRAPHICS FOR THE COLLEGE OF EDUCATION & HUMAN PERFORMANCE, FALL SEMESTERS 2011-2015

ETHNICITY	FALL 2011		FALL 2012		FALL 2013		FALL 2014		FALL 2015	
	Female	Male	Female	Male	Female	Male	Female	Male	Female	Male
Hispanic	621	286	649	321	653	299	650	290	679	302
White	147	88	134	79	131	65	126	56	115	57
International	12	12	15	5	18	9	28	14	24	14
African American	25	64	16	62	16	51	19	61	29	71
American Indian	2	0	1	0	2	1	0	1	1	1
Asian	4	0	3	1	1	1	1	1	2	1
Hawaiian	1	2	1	0	1	1	1	1	1	0
Multi-Racial	3	0	3	0	6	1	6	1	3	1
Unknown	13	10	8	4	5	3	3	1	2	1
Total	828	462	830	472	833	431	834	426	856	448
Grand Total	1,290		1,302		1,264		1,260		1304	

STUDENT DEMOGRAPHICS (CONTINUED)

FIGURE 26. DEMOGRAPHICS FOR THE COLLEGE OF ENGINEERING, FALL SEMESTERS 2011-2015



Note: This table reflects the total number of students (both male and female) for each ethnic group.
*Other includes American Indian, Asian, Native Hawaiian, Multi-Racial, and Unknown.

TABLE 30. DEMOGRAPHICS FOR THE COLLEGE OF ENGINEERING, FALL SEMESTERS 2011-2015

ETHNICITY	FALL 2011		FALL 2012		FALL 2013		FALL 2014		FALL 2015	
	Female	Male	Female	Male	Female	Male	Female	Male	Female	Male
Hispanic	119	490	135	541	161	635	159	679	195	779
White	35	223	48	247	47	286	42	284	50	297
International	47	281	73	304	143	550	301	1,185	299	1,403
African American	7	41	7	53	13	69	17	82	16	84
American Indian	2	1	2	0	0	1	0	1	1	1
Asian	3	8	3	18	2	23	3	29	6	29
Hawaiian	0	1	0	1	0	1	0	0	0	1
Multi-Racial	0	6	2	9	3	9	2	9	4	11
Unknown	6	20	1	11	4	9	3	12	6	7
Total	219	1,071	271	1,184	373	1,583	527	2,281	577	2,612
Grand Total	1,290		1,455		1,956		2,808		3189	

UNDERGRADUATE ADMISSIONS

FIGURE 27. UNDERGRADUATE STUDENT PROFILES, FALL SEMESTERS 2011-2015

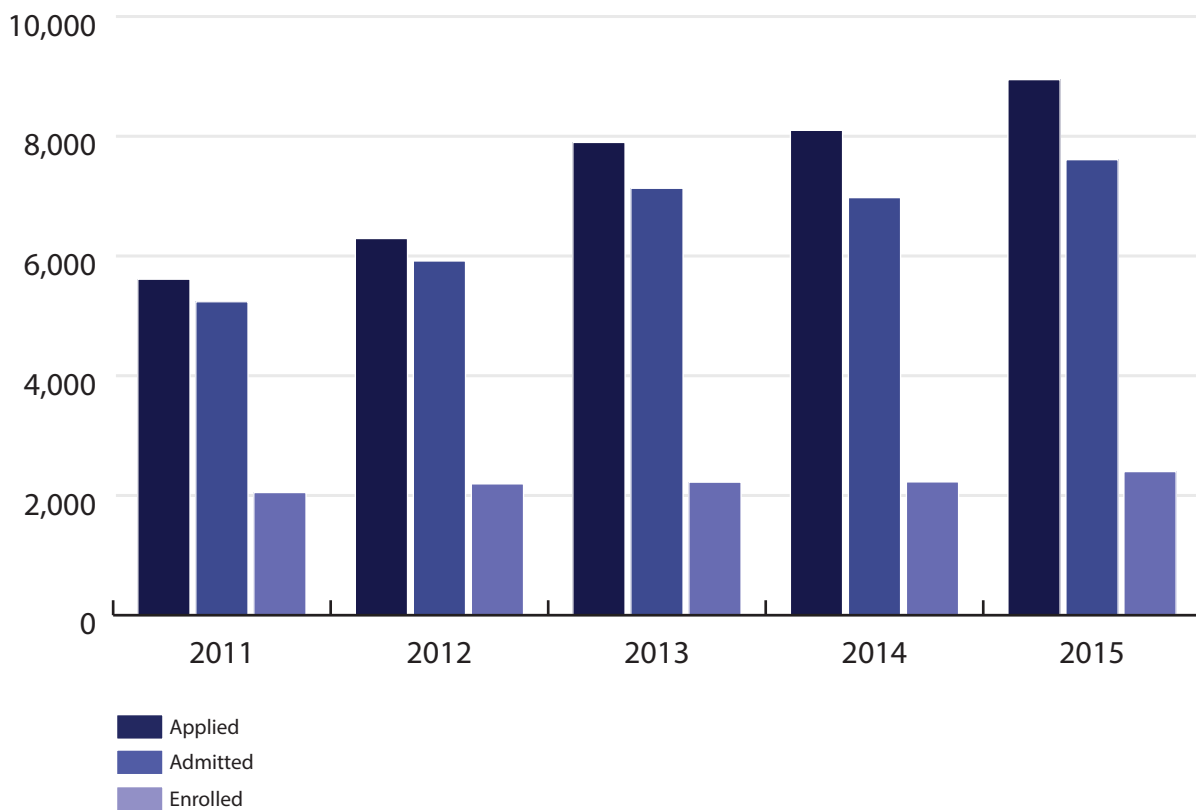


TABLE 31. UNDERGRADUATE STUDENT PROFILES, FALL SEMESTERS 2011-2015

STATUS	FALL 2011	FALL 2012	FALL 2013	FALL 2014	FALL 2015
Applied	5,612	6,292	7,897	8,099	8,946
Admitted	5,236	5,917	7,131	6,975	7,609
Enrolled	2,049	2,194	2,222	2,227	2,399

HIGH SCHOOL PERCENTILES

FIGURE 28. HIGH SCHOOL PERCENTILES FOR FIRST-TIME-IN-COLLEGE DEGREE-SEEKING STUDENTS, FALL SEMESTERS 2011-2015

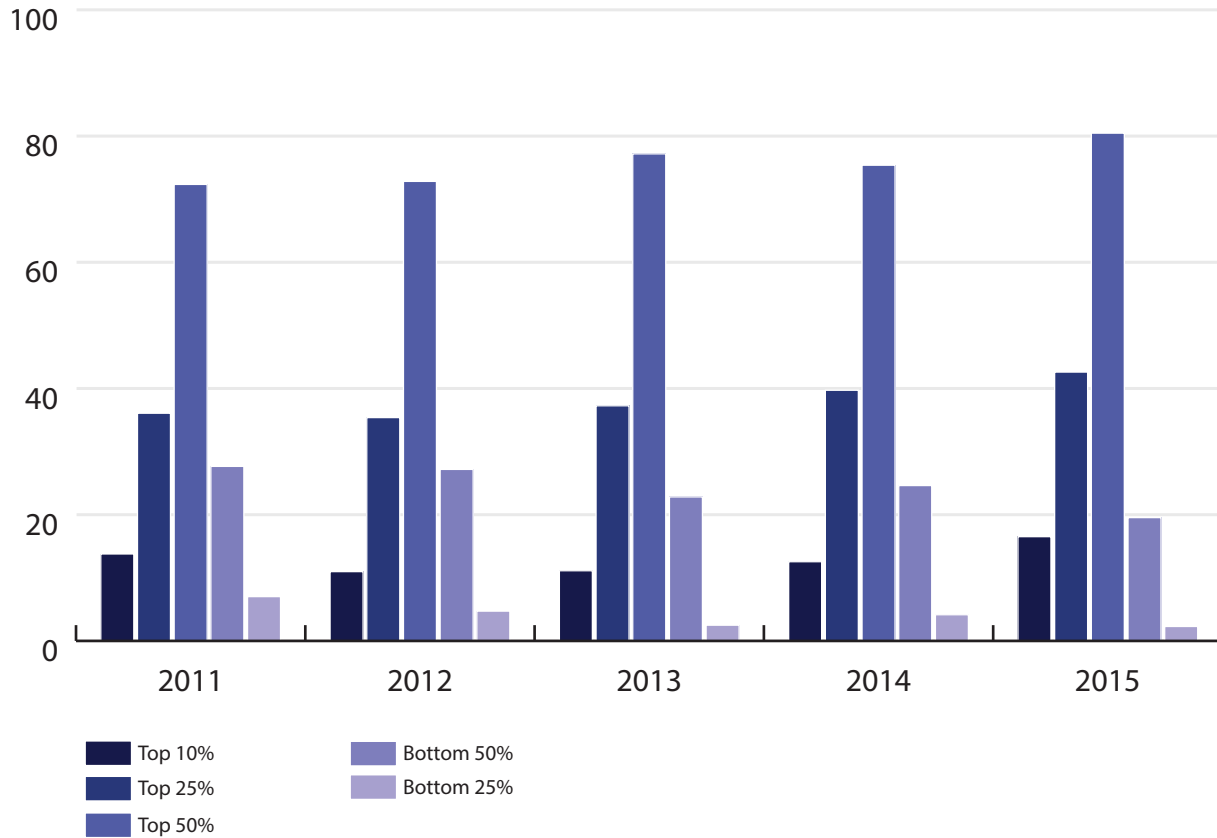


TABLE 32. HIGH SCHOOL PERCENTILES FOR FIRST-TIME-IN-COLLEGE DEGREE-SEEKING STUDENTS, FALL SEMESTERS 2011-2015

PERCENTILE	FALL 2011	FALL 2012	FALL 2013	FALL 2014	FALL 2015
Top 10%	13.78%	10.98%	11.12%	12.55%	16.52%
Top 25%	36.08%	35.39%	37.26%	39.72%	42.60%
Top 50%	72.34%	72.82%	77.18%	75.38%	80.46%
Bottom 50%	27.66%	27.18%	22.82%	24.62%	19.54%
Bottom 25%	7.02%	4.72%	2.49%	4.15%	2.29%

ENTRANCE EXAM SCORES

FIGURE 29. AVERAGE ACT SCORES FOR FIRST-TIME DEGREE-SEEKING STUDENTS, FALL SEMESTERS 2011-2015

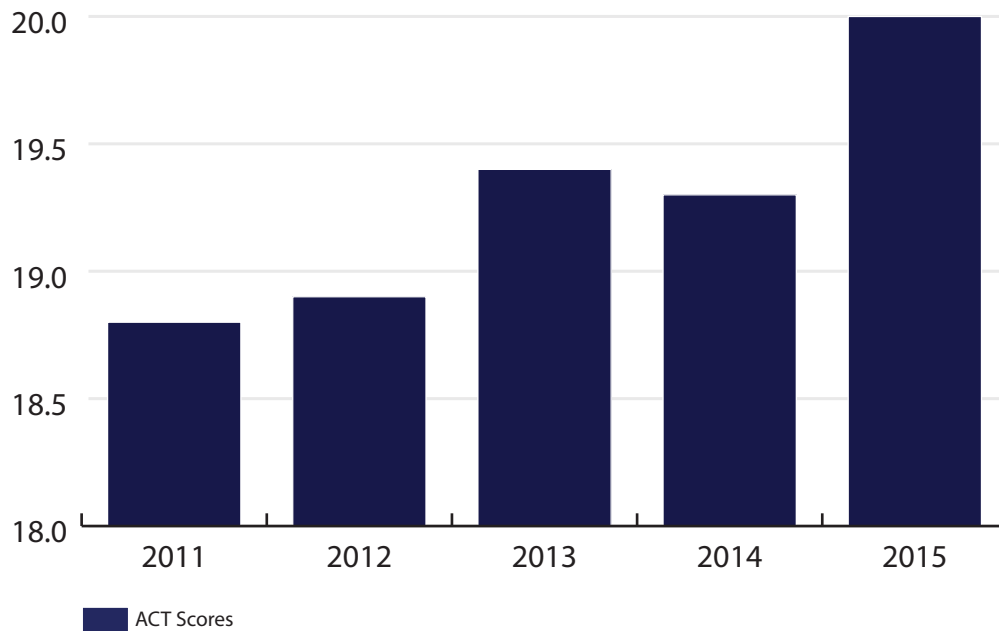


FIGURE 30. AVERAGE SAT SCORES FOR FIRST-TIME DEGREE-SEEKING STUDENTS, FALL SEMESTERS 2011-2015

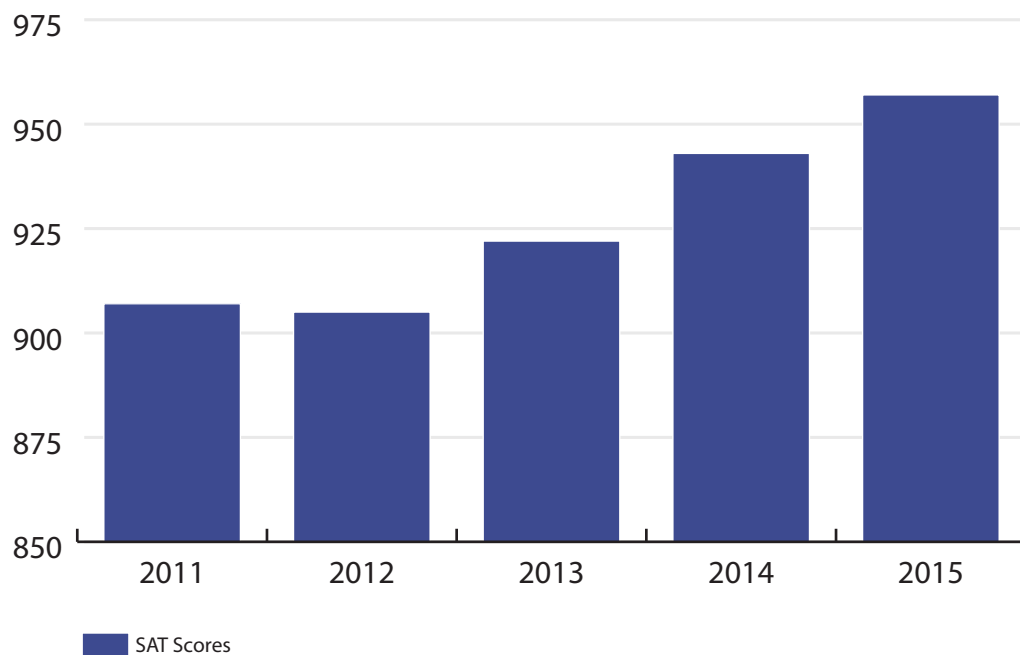


TABLE 33. AVERAGE ACT & SAT SCORES FOR FIRST-TIME DEGREE-SEEKING STUDENTS, FALL SEMESTERS 2010-2014

EXAM	FALL 2011	FALL 2012	FALL 2013	FALL 2014	FALL 2015
ACT	18.8	18.9	19.4	19.3	20.0
SAT	907	905	922	943	957

ENTRANCE EXAM SCORES (CONTINUED)

FIGURE 31. AVERAGE ACT SCORES FOR FIRST-TIME TRANSFER DEGREE-SEEKING STUDENTS, FALL SEMESTERS 2011-2015

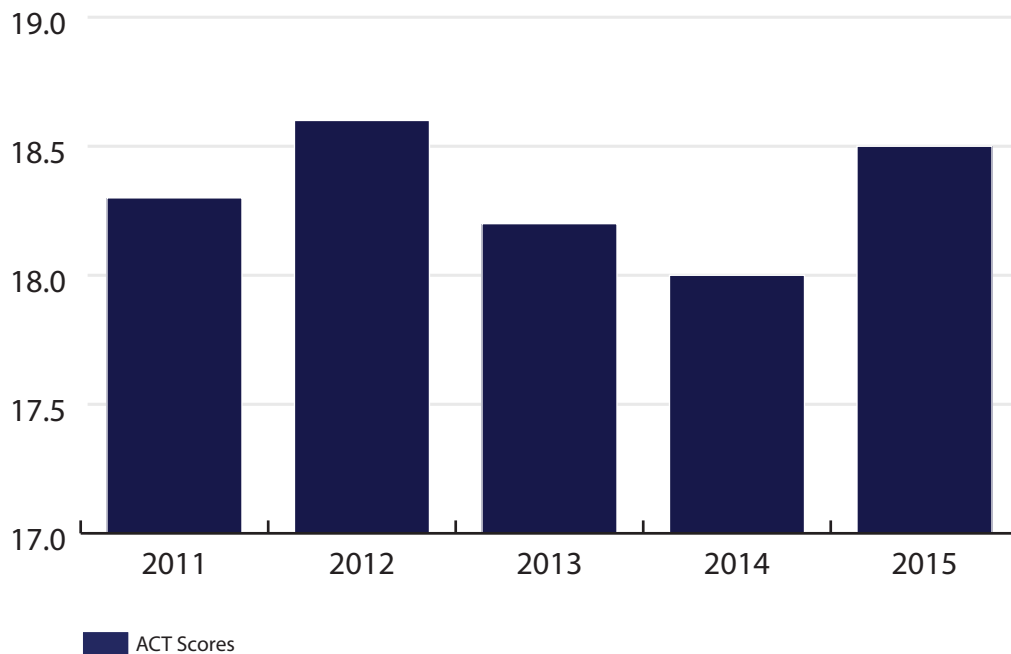


FIGURE 32. AVERAGE SAT SCORES FOR FIRST-TIME TRANSFER DEGREE-SEEKING STUDENTS, FALL SEMESTERS 2011-2015

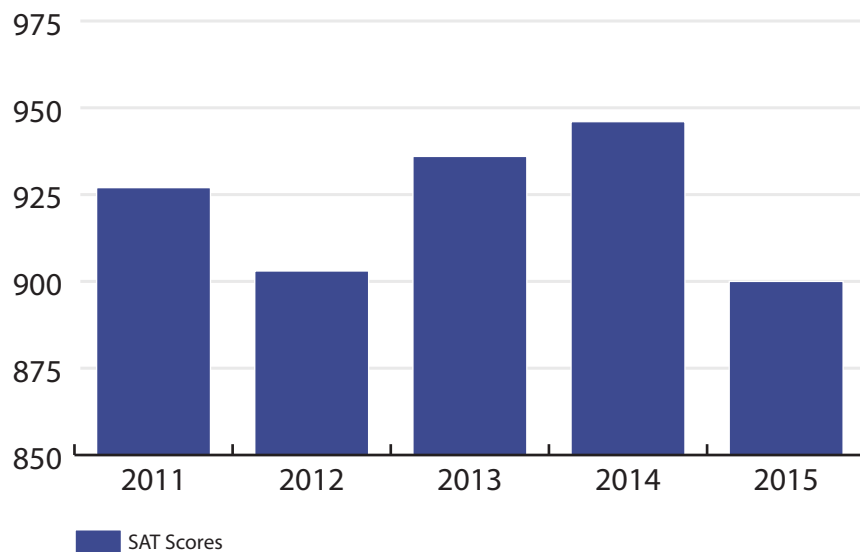


TABLE 34. AVERAGE ACT & SAT SCORES FOR FIRST-TIME TRANSFER DEGREE-SEEKING STUDENTS, FALL SEMESTERS 2011-2015

EXAM	FALL 2011	FALL 2012	FALL 2013	FALL 2014	FALL 2015
ACT	18.3	18.6	18.2	18	18.5
SAT	927	903	936	946	900

RECRUITMENT

TABLE 35. TOP 10 HIGH SCHOOLS OF ORIGIN FOR FIRST-TIME-IN-COLLEGE DEGREE-SEEKING STUDENTS, FALL SEMESTERS 2011-2015

FALL 2011		FALL 2012		FALL 2013		FALL 2014		FALL 2015	
High School	Count	High School	Count	High School	Count	High School	Count	High School	Count
H. M. King	63	H. M. King	42	H. M. King	46	H. M. King	46	H. M. King	50
Robstown	25	Alice	36	Bishop	30	Bishop	28	Bishop	27
Bishop	23	Calallen	35	Tuloso-Midway	26	Calallen	23	Alice	26
Weslaco East	21	Harlingen	30	Calallen	20	Alice	19	Mary Carroll	25
Calallen	18	Kaufer	26	Robstown	19	Robstown	19	Los Fresnos	22
Alice	17	Bishop	24	San Benito	19	Homer Hanna	17	Callallen	21
Orange Grove	17	Robstown	23	Kaufer	17	La Joya	17	Foreign Secondary School	19
San Benito	17	Eagle Pass	21	Sharyland	17	Falfurias	16	Mercedes Early College Academy	19
Weslaco	17	Harlingen South	20	Alice	16	Academy for Developmental Learning	15	La Joya	18
Rio Grande City	16	Tuloso-Midway	19	Academy for Developmental Learning	16	Tuloso-Midway	15	Tuloso-Midway	18

RECRUITMENT (CONTINUED)

TABLE 36. TOP 20 UNIVERSITIES AND JUNIOR COLLEGES OF ORIGIN FOR FIRST-TIME TRANSFER DEGREE-SEEKING STUDENTS, FALL SEMESTERS 2011-2015

FALL 2011		FALL 2012		FALL 2013		FALL 2014		FALL 2015	
School	Count	School	Count	School	Count	School	Count	School	Count
South Texas Coll.	102	South Texas Coll.	86	South Texas Coll.	103	South Texas Coll.	84	South Texas College	104
Coastal Bend Coll.	54	Coastal Bend Coll.	61	Texas State Tech Coll.-Harlingen	58	Coastal Bend Coll.	53	Texas State Tech Coll.-Harlingen	61
Texas State Tech Coll.-Harlingen	39	Texas State Tech Coll.-Harlingen	61	Coastal Bend Coll.	46	Texas State Tech Coll.-Harlingen	39	Coastal Bend College	52
Del Mar Coll.	35	Univ. of Texas-Pan American	37	Del Mar Coll.	36	Del Mar Coll.	34	Del Mar Coll.	31
Univ. of Texas-Pan American	32	Del Mar Coll.	34	Univ. of Texas-Pan American	29	Univ. of Texas-Pan American	19	Alamo Comm. Coll. District	23
Blinn Coll.	21	Texas A&M - Corpus Christi	17	Alamo Com. Coll. District	22	Alamo Com. Coll. District	18	Univ. of Texas-Rio Grand Valley	22
Alamo Com. Coll. District	17	Inst. National Polytech	1	Texas A&M - Corpus Christi	21	Texas A&M - Corpus Christi	17	Univ. of Texas-San Antonio	16
Southwest Texas Junior Coll.	17	Texas State Univ.-San Marcos	9	Southwest Texas Junior Coll.	19	Laredo Com. Coll.	16	Southwest Texas Junior Coll.	15
Utah State Univ.	17	Blinn Coll.	14	Blinn Coll.	15	Blinn Coll.	11	Blinn Coll.	13
Laredo Com. Coll.	10	Alamo Com. Coll. District	16	Laredo Com. Coll.	14	Univ. of Texas-San Antonio	11	Texas A&M International Univ.	12
Univ. of Texas-Brownsville	10	Texas A&M International Univ.	10	Houston Com. Coll.	13	Southwest Texas Junior Coll.	9	Laredo Com. Coll.	10
Texas A&M - Corpus Christi	9	Southwest Texas Junior Coll.	13	Victoria Coll	10	Texas A&M International Univ.	9	Texas A&M - Corpus Christi	10
Texas State Univ.-San Marcos	7	Univ. of Texas-Brownsville	13	Texas State Univ.-San Marcos	7	San Jacinto Coll.	6	Houston Com. Coll.	9
Victoria Coll.	5	Wharton County Junior Coll.	9	Univ. of Texas-Brownsville	7	McLennan Com. Coll.	5	Univ. of Texas Brownsville	6
Texas A&M Univ.	4	Victoria Coll.	8	Austin Com. Coll.	6	Wharton County Junior Coll.	5	Austin Com. Coll.	3
Univ. of Texas-San Antonio	4	Austin Com. Coll.	9	Wharton County Junior Coll.	6	Navarro Coll.	4	Lone Star College System	3
Alcala de Henares Univ.	3	Alvin Com. Coll.	3	Alvin Com. Coll.	4	Victoria Coll.	4	McLennan Com. Coll.	3
Alvin Com. Coll.	3	Saint Philip's Coll.	5	Clarendon Coll.	4	Lone Star Coll. System	3	Tarrant County Coll. District	3
Iowa Western Com. Coll.	3	Palo Alto Coll.	4	Paris Junior Coll.	4	Prairie View A&M Univ.	3	Texas Tech Univ.	3
Northwest Vista Coll.	3	San Jacinto Coll	6	Texas A&M Univ.	4	Schreiner Univ.	3	Victoria Coll.	3



SECTION 3: FACULTY & STAFF INFORMATION



DEFINITIONS

FTE: FULL TIME EQUIVALENCY

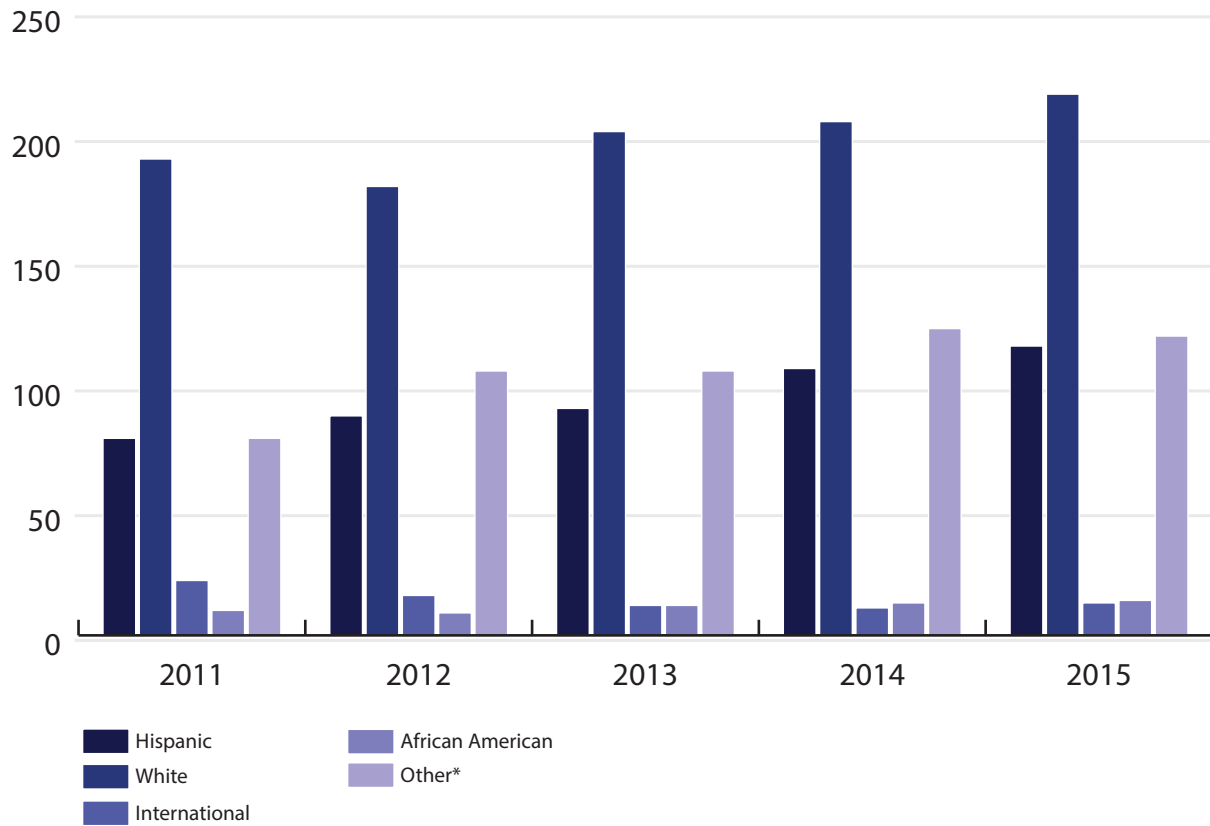
As reported to the THECB in the Coordinating Board Manual (CBM) 008 report, Faculty FTE is the percent of time assigned to each faculty appointment. To compute the total FTE amount, sum the percent time of all appointments (e.g., instructional appointments and administrative appointments in direct support of instruction) for each faculty member and divide by 100.

FACULTY HEADCOUNT

Faculty numbers are calculated using Fall CBM 008 data and only include faculty that are involved in instruction.

FACULTY BY ETHNICITY

FIGURE 33. INSTRUCTIONAL FACULTY HEADCOUNT BY ETHNICITY, FALL SEMESTERS 2011-2015



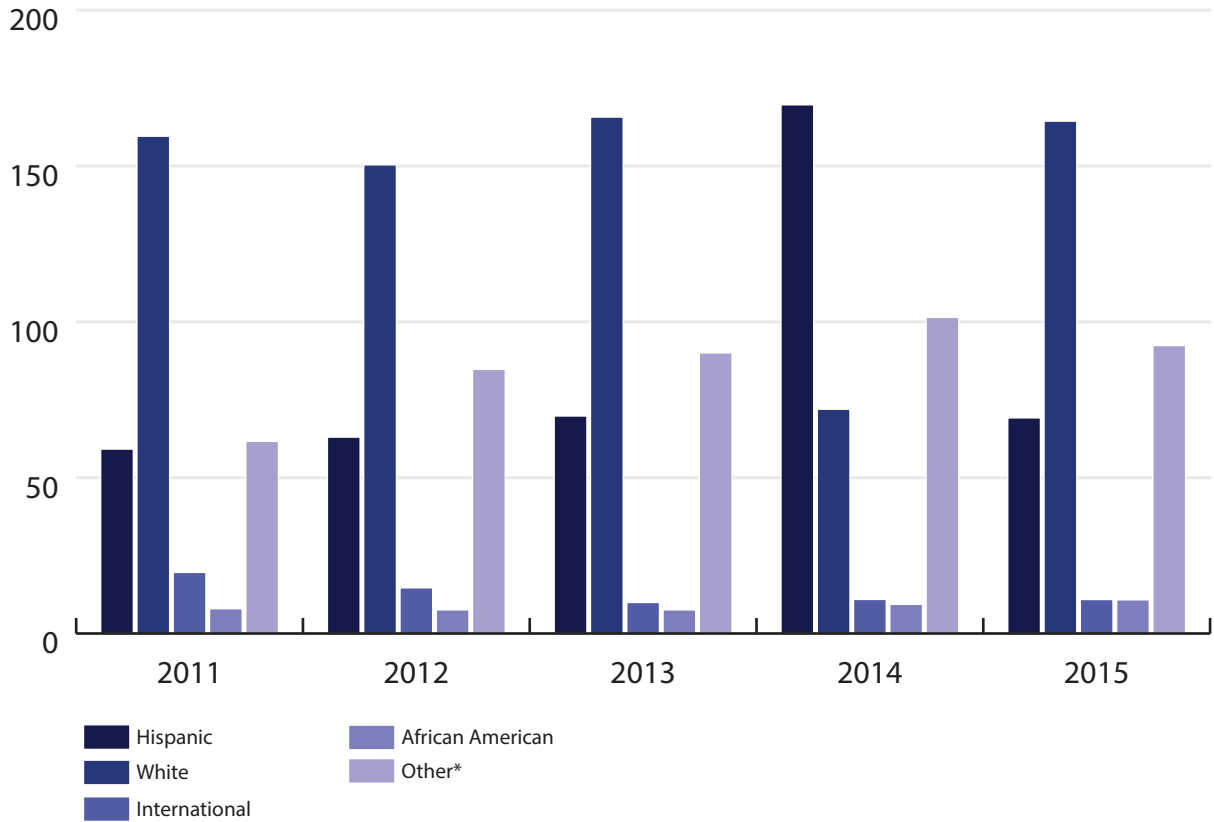
*Other includes American Indian, Asian, Native Hawaiian, Multi-Racial, and Unknown.

TABLE 37. INSTRUCTIONAL FACULTY HEADCOUNT BY ETHNICITY, FALL SEMESTERS 2011-2015

ETHNICITY	FALL 2011	FALL 2012	FALL 2013	FALL 2014	FALL 2015
Hispanic	79	88	91	107	116
White	191	180	202	206	217
International	22	16	12	11	13
African American	10	9	12	13	14
Asian	29	26	30	28	49
American Indian	5	4	4	4	3
Multi-Racial	0	0	0	1	0
Hawaiian	0	2	7	14	0
Unknown	45	74	65	76	68
Total	381	399	423	460	480

FACULTY BY ETHNICITY (CONTINUED)

FIGURE 34. INSTRUCTIONAL FTE FACULTY BY ETHNICITY, FALL SEMESTERS 2011-2015



*Other includes American Indian, Asian, Native Hawaiian, Multi-Racial, and Unknown.

TABLE 38. INSTRUCTIONAL FTE FACULTY BY ETHNICITY, FALL SEMESTERS 2011-2015

ETHNICITY	FALL 2011	FALL 2012	FALL 2013	FALL 2014	FALL 2015
Hispanic	59.16	63.00	69.78	71.95	69.18
White	159.55	150.37	165.69	169.63	164.38
International	19.60	14.65	9.95	10.93	10.90
African American	7.95	7.58	7.58	9.35	10.80
Asian	27.30	24.25	28.73	27.03	40.12
American Indian	5.00	4.00	4.00	4.00	3.00
Multi-Racial	0.00	0.00	0.00	1.00	0.00
Hawaiian	0.00	1.80	7.00	14.00	0.00
Unknown	29.34	54.69	50.31	55.40	49.28
Total	307.90	320.34	343.04	363.29	347.66

FACULTY BY GENDER

FIGURE 35. INSTRUCTIONAL FACULTY HEADCOUNT BY GENDER, FALL SEMESTERS 2011-2015

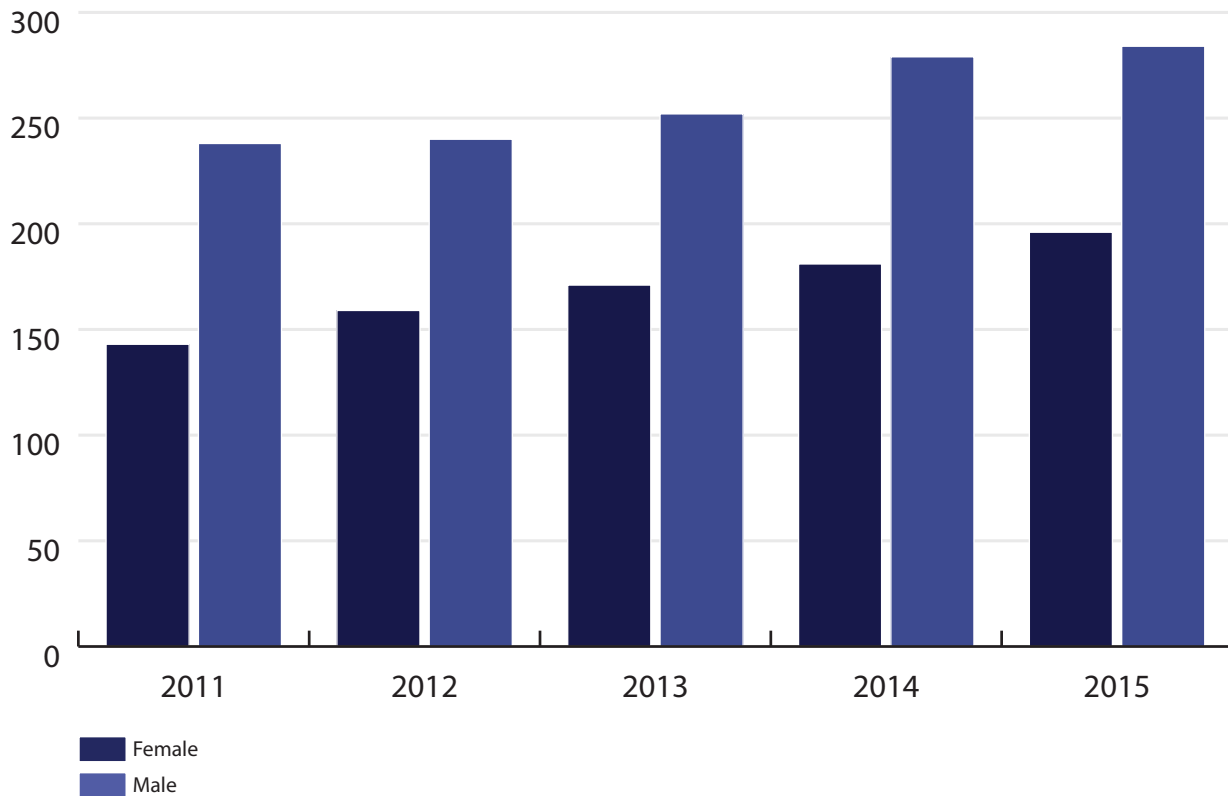


TABLE 39. INSTRUCTIONAL FACULTY HEADCOUNT BY GENDER, FALL SEMESTERS 2011-2015

GENDER	FALL 2011	FALL 2012	FALL 2013	FALL 2014	FALL 2015
Female	143	159	171	181	196
Male	238	240	252	279	284
Total	381	399	423	460	480

FACULTY BY RANK

FIGURE 36. INSTRUCTIONAL FACULTY HEADCOUNT BY RANK, FALL SEMESTERS 2011-2015

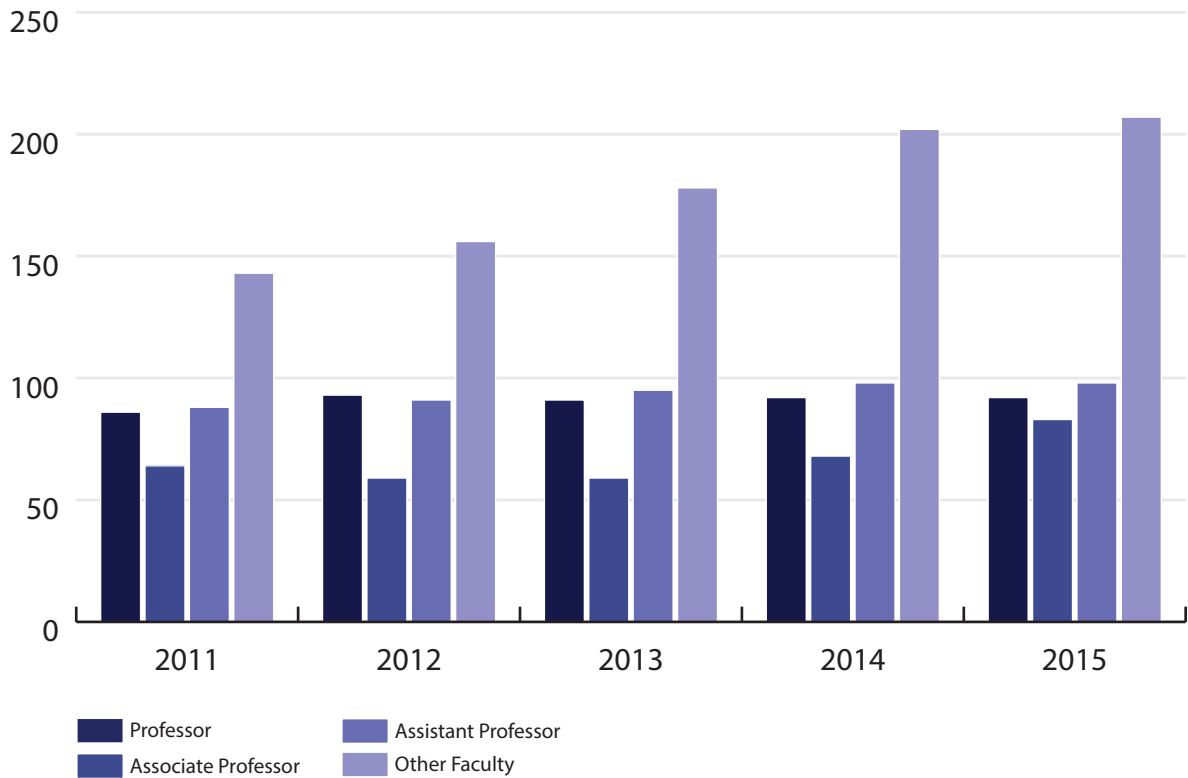


TABLE 40. INSTRUCTIONAL FACULTY HEADCOUNT BY RANK, FALL SEMESTERS 2011-2015

RANK	FALL 2011	FALL 2012	FALL 2013	FALL 2014	FALL 2015
Professor	86	93	91	92	92
Associate Professor	64	59	59	68	83
Assistant Professor	88	91	95	98	98
Other Faculty	143	156	178	202	207
Total	381	399	423	460	480

FACULTY BY TENURE STATUS

FIGURE 37. INSTRUCTIONAL FACULTY HEADCOUNT BY TENURE STATUS, FALL SEMESTERS 2011-2015

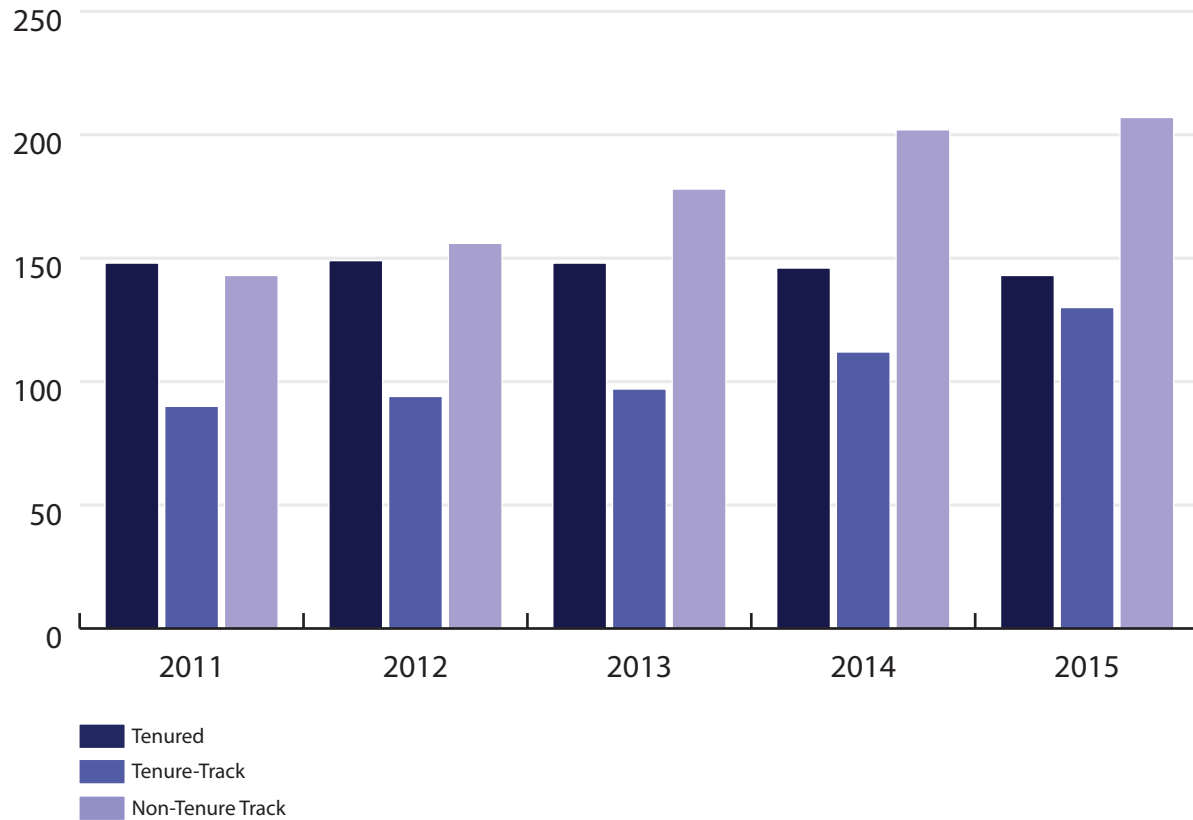


TABLE 41. INSTRUCTIONAL FACULTY HEADCOUNT BY TENURE STATUS, FALL SEMESTERS 2011-2015

TENURE STATUS	FALL 2011	FALL 2012	FALL 2013	FALL 2014	FALL 2015
Tenured	148	149	148	146	143
Tenure-Track	90	94	97	112	130
Non-Tenure Track	143	156	178	202	207
Total	381	399	423	460	480

FACULTY BY TENURE STATUS (CONTINUED)

FIGURE 38. FACULTY FTE BY TENURE STATUS, FALL SEMESTERS 2011-2015

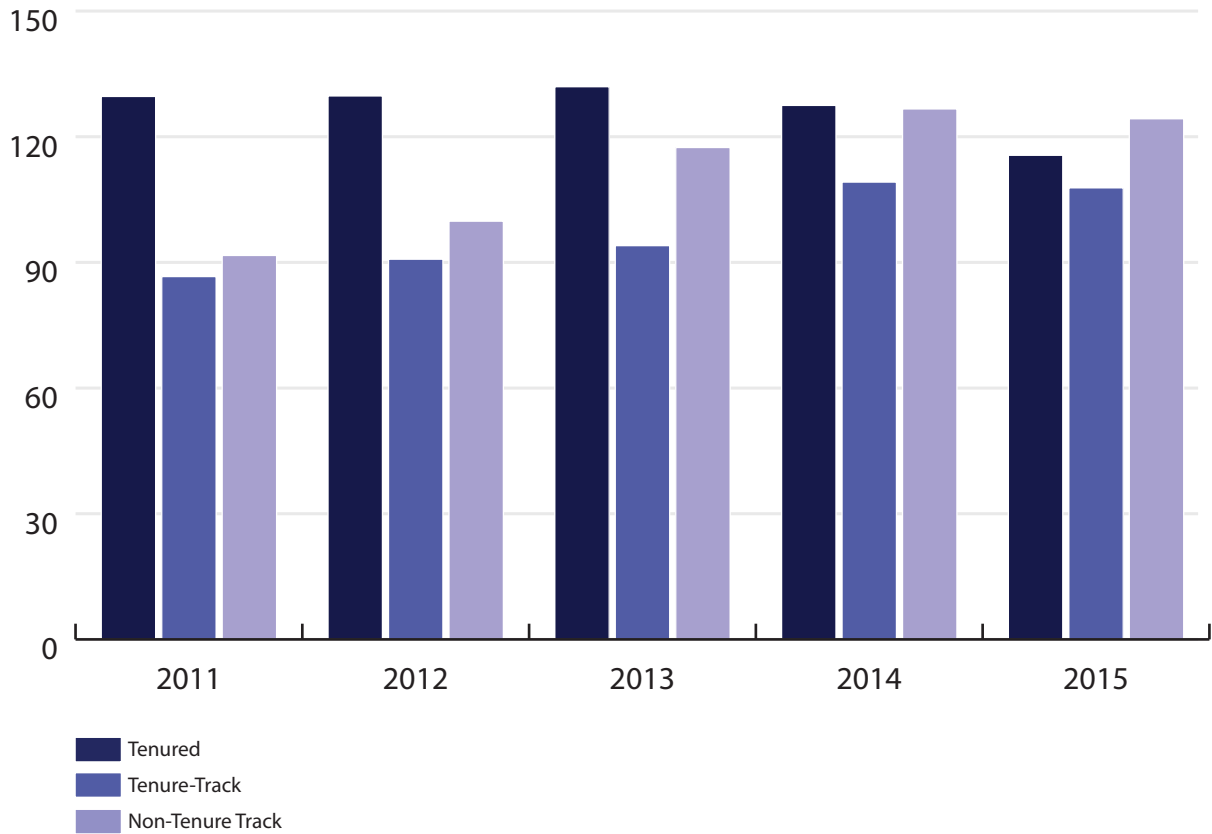


TABLE 42. FACULTY FTE BY TENURE STATUS, FALL SEMESTERS 2011-2015

TENURE STATUS	FALL 2011	FALL 2012	FALL 2013	FALL 2014	FALL 2015
Tenured	129.62	129.74	131.94	127.48	115.57
Tenure-Track	86.62	90.76	94.00	109.17	107.80
Non-Tenure Track	91.66	99.84	117.43	126.64	124.29
Total	307.90	320.34	343.37	363.29	347.66

STAFF-BUDGETED

FIGURE 39. STAFF HEADCOUNT BY BUDGETED POSITIONS, FALL SEMESTERS 2011-2015

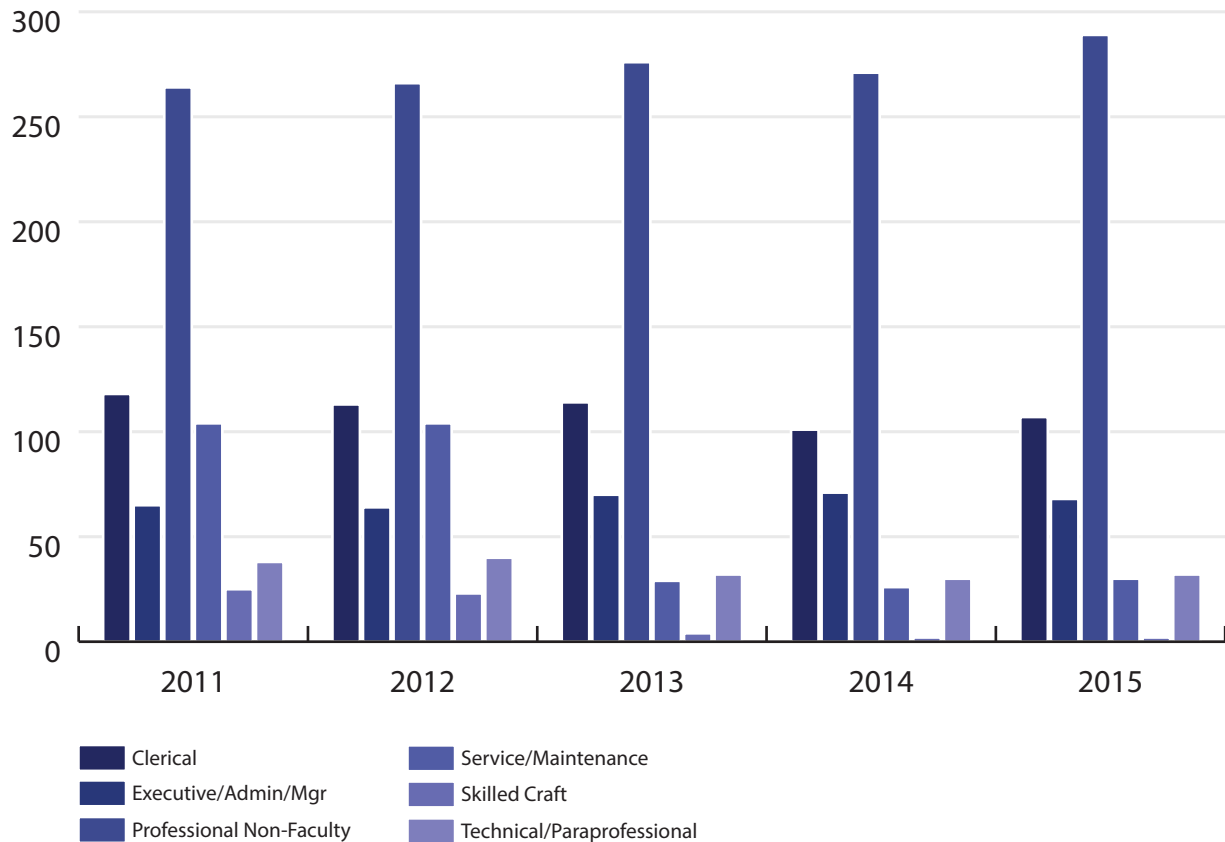
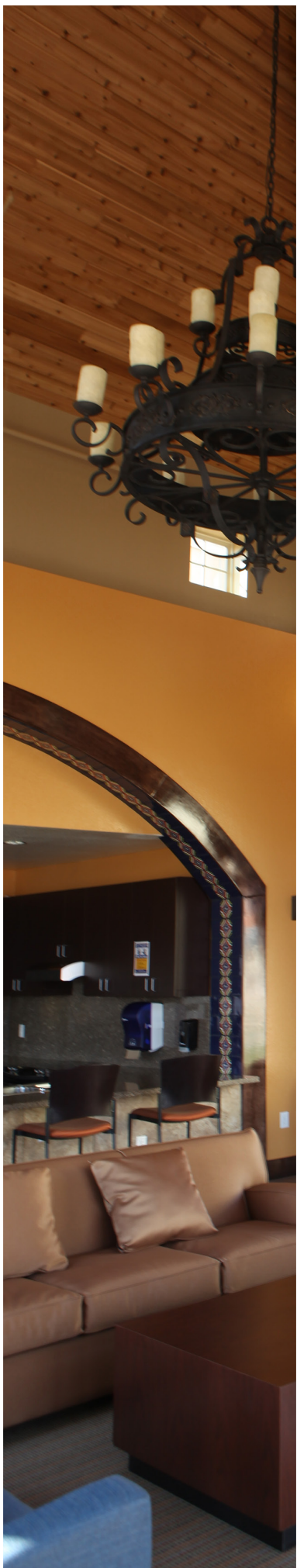


TABLE 43. STAFF HEADCOUNT BY BUDGETED POSITIONS, FALL SEMESTERS 2011-2015

BUDGETED POSITIONS*	FALL 2011	FALL 2012	FALL 2013	FALL 2014	FALL 2015
Clerical	118	113	114	101	107
Executive/Admin/Manager	65	64	70	71	68
Professional Non-Faculty	264	266	276	271	289
Service/Maintenance	104	104	29	26	30
Skilled Craft	25	23	4	2	2
Technical/Paraprofessional	38	40	32	30	32
Total	614	610	525	501	528

* Data Source: TAMUS Budget Payroll Personnel System (BPP)



SECTION 4: UNIVERSITY FACILITIES



FACILITIES OVERVIEW

Texas A&M-Kingsville holds nearly 1,569 acres of land in four counties of South Texas, including a number of non-contiguous sites from near Bishop, Texas to just north of Brownsville, TX. The University's main campus is located in Kingsville, TX. Additional off-campus sites support the academic, research, and public service objectives of the University.

Academic and research facilities represent a major portion of the University's permanent improvements, providing an extensive infrastructure of support for the operational needs

of a comprehensive, modern university. Of the University's approximate 2.3 million total square footage of floor space, 794,450 is designated as academic space. The balance is designated Auxiliary (AUX) which includes residence halls, recreational sports, athletics, and student activities. Academic space square footage includes 309,522 for teaching (including 88 classrooms), 121,689 for library, 75,610 for research, 218,749 for offices, and 68,880 for academic support (source: THECB Academic Space Projection Model - Fall 2014).

MAIN CAMPUS

Located in the town of Kingsville, TX—the seat of Kleberg County—Texas A&M-Kingsville's main campus consists of 257 acres of land, 75 major buildings, and numerous streets, sidewalks, and parking lots. Main campus buildings account for over 2.1 million of the University's total square footage and approximately 1.4 million square feet of education and general (E&G) space.

RESIDENTIAL FACILITIES

Texas A&M-Kingsville's main campus includes six on-campus residence halls with approximately 2278 beds, providing accommodations for approximately 26% of the student population. Also located within these halls are nine Living Learning Communities for students enrolled in selected programs.

DINING SERVICE FACILITIES

Texas A&M-Kingsville operates numerous dining facilities, managed by ARAMARK. The primary dining facilities are located within the Memorial Student Union Building, Turner-Bishop Dining Hall, and the Javelina Dining Hall. ARAMARK also manages several convenience store/deli services at various locations throughout campus.

RECREATION FACILITIES

Texas A&M-Kingsville's athletic and recreation facilities offer recreational opportunities and health benefits for all students, faculty, and staff. The Memorial Student Union Building provides a TV room, game rooms, and a food court. Steinke Physical Education Complex provides a pool, basketball court, racquetball and tennis facilities, a bowling alley, and exercise areas. Javelina Stadium has an outdoor track, intramural fields for soccer and golf, and football facilities. The Student Recreation Building provides access to fitness equipment along with a weight room and outdoor basketball courts. Additionally, the University maintains tennis and volleyball courts, an archery range, and intramural fields for various organized and open recreational activities.

ADDITIONAL ON-CAMPUS FACILITIES

Jones Auditorium. The auditorium is a 1,200 seat concert hall serving both the University and its surrounding community.

Cisneros Center for Young Children. Tasked with meeting the growing needs of faculty, staff, and students for childcare services, the Center for Young Children also provides educational opportunities for students in many academic disciplines, including early childhood education, speech and

communication, psychology, and kinesiology. Headed by a director and staffed with five full-time teachers, the center admits approximately 35 children, from three months to five years in age.

Caesar Kleberg Wildlife Center.

Located in a natural wildlife setting and surrounded by indigenous vegetation, wildlife, and hiking trails, the Wildlife Center provides the University and surrounding community with informal and formal meeting spaces.

John E. Conner Museum. Relocated to Texas A&M-Kingsville's historic Loftin Hall in 1973, the Connor Museum houses and cares for collections, maintains permanent exhibits, and provides educational programs and special events for children and adults of the university and surrounding communities.

J. H. Clement Rehabilitation Center. In partnership with Christus Spohn Physical Therapy and Rehabilitation, Texas A&M-Kingsville's Rehabilitation Center provides prevention injury

training, injury treatment for the university athletics program, and support training for athletics programs. Christus Spohn rents space in the facility for use with private patients.

Karr-Veterans Memorial Hall. As Texas A&M-Kingsville's Reserve Officers Training Corp (ROTC) facility, Memorial Hall houses an armory and short firing range, as well as classrooms and offices for faculty and support staff.

Serpentarium. Part of the National Natural Toxins Research Center (NNTRC), the Serpentarium is a state-of-the-art animal research facility designed to provide adequate care for venomous snakes while providing a safe environment for NNTRC staff. The facility is the foundation of a \$2.5 million drug discovery grant funded by the National Institutes of Health.

Vivarium. Owned and operated by the Texas A&M University Health Science Center, the Vivarium is a high tech, high security facility for humane research on small animals.

OFF CAMPUS

In addition to main campus facilities, Texas A&M-Kingsville maintains several off-campus research and teaching facilities in support of the research and educational aspects of its mission.

RESEARCH FACILITIES

Citrus Center. Located on approximately 297 acres near the Mexican border, the Citrus Center in Weslaco, TX includes a newly completed \$6 million research facility. Designed to help develop a solution to unwanted infestations of foreign insects, this building also provides research facilities needed to develop citrus products of national and international fame, e.g., the Star Ruby and Ruby Red Grapefruit. In September 2013, the Citrus Center became the recipient of 50 acres and 6 buildings through a grant from the United States Department of Agriculture. This transfer of property was done to support the growing research

needs on the Lower Rio Grande Valley. The Citrus Center also hosts a limited number of classes, comprising less than 49% of a degree program.

Site 55. Located 25 miles southeast of the main campus on Baffin Bay, Site 55 was obtained from the federal government after previously serving as a naval air-training site. Currently an undeveloped biological research property, this facility includes 142 acres to support the teaching and research activities of the Biology Department, primarily in the fields of marine science and ecology.

South Pasture Research Facility. Located 10 miles south of the main campus, the South Pasture is a research and teaching facility situated on 2552 acres in Kleberg County. The property, once deeded to the University by the King Ranch, provides outdoor educational opportunities for local students and serves as a demonstration site

of semi-arid land management for land owners.

North Farm. Located in Nueces County, the North Farm is a 160-acre teaching facility that includes a number of buildings for farm equipment and a feed storage. In recent years, the North Farm has been leased out to crop farming, providing additional revenue streams to the University.

University Farm. Located one-half mile north of the main campus, the University Farm consists of 545 acres, of which approximately 76 acres are leased to the United States Department of Agriculture for the research activities of the Kika de la Garza Plant Material Center. The farm includes several buildings, greenhouses, a 35 acre Wildlife Research Park, a pathology laboratory, an aviary, and a wildlife interpretive center.

OTHER TEACHING FACILITIES

University Center. The University Center, also referred to as the Multi-Institution Teaching Center (MITC), is located in Harlingen, Texas. The MITC facility is a single building owned jointly by the Harlingen Economic Development Board and by Texas State Technical College in Harlingen. Texas A&M-Kingsville neither owns nor rents the facility. However, the University pays fees to deliver courses at the facility. The two-story, 38,500 square foot building includes solar panels on the roof, a digital library, a computer lab, a student lounge complex, a faculty office suite, two lecture halls, eleven classrooms, and three seminar rooms. Built in 2011 with expectations to house many more programs than are actually delivered there, the facility is well maintained and has the capacity for future expansion.



FACILITIES INVENTORY

TABLE 44. BUILDING LIST, FALL 2015

BUILDING NO.	BUILDING CODE	BUILDING NAME	YEAR BUILT	GROSS SQUARE FOOTAGE	ZIP CODE
0501	COLH	College Hall	1949	49999	78363
0502	MANN	J.R. Manning Hall	1925	44989	78363
0503	HILL	Lon C. Hill Hall	1960	24223	78363
0504	MUSB	J.L. Bellamah Music Building	1960	27929	78363
0505	SPEE	Speech Building	1960	13863	78363
0506	BAIL	Ben Bailey Art Building	1960	11707	78363
0507	NIER	J.L. Nierman Science Hall	1938	39181	78363
0508	NIAN	Nierman Annex	1942	2107	78363
0509	HSBL	Human Sciences	1960	19852	78363
0510	CTYC	Marc Cisneros Center for Young Children	2001	6490	78363
0512	KLBH	A.L. Kleberg Hall	1950	41254	78363
0513	PHRM	Irma Lerma Rangel College of Pharmacy	2005	63479	78363
0517	KAGI	Klerberg Building for Agriculture	1959	21203	78363
0520	DRMA	Drama/Art Building	1973	9498	78363
0521	KVMH	Karr Veterans Memorial Hall	1960	11264	78363
0522	SERP	John C. Perez Serpenterium	2009	4383	78363
0523	SAMF	Sam Fore Jr. Hall	1965	23312	78363
0524	BESB	Biological & Health Sciences	1967	41705	78363
0525	HREC	Health And Recreation Building	1931	32436	78363
0526	LIBR	James C. Jernigan Library	1968	140147	78363
0527	INDT	A L Gross Industry & Technology Building	1970	21469	78363
0528	SPEC	G E Steinke Physical Ed Center	1971	99034	78363
0529	KINE	Kinesiology/Rec. Sports Field House	1998	626	78363
0533	RHOD	Robert D Rhode Hall	1973	76032	78363
0535	BUSA	Business Administration Building	1976	42595	78363
0537	COUH	Robert B. Cousins Hall	1935	23808	78363
0538	SEAL	Edward W. Seale Hall	1935	22883	78363
0540	MCCU	George W Mc Culley Hall	1977	6204	78363
0542		Center For Applied Research & Entrepreneurship	1950	28012	78363
0543	DOTT	F.H. Dotterweich Engineering Hall	1978	12781	78363
0544	HAGL	J.W. Howe Agriculture Lab Center	1977	21913	78363
0546	FCBL	Farm Classroom Building	1954	1560	78363
0550	MCEL	McNeil Engineering Lab Building	1984	14873	78363
0559		Wilson's Hardware Building	1912	7078	78363
0560	ENGC	Engineering Complex	2001	80418	78363
0561		Green House Research Building	2010	1524	78363
0562		Green House 1	2010	2260	78363
0563		Green House 2	2010	1552	78363
0600	JOAU	Edward N. Jones Auditorium	1942	23020	78363
0601	PRES	Presidents Home	1925	3759	78363
0602	PRGR	President's Garage & Apt.	1986	1424	78363
0603	ARTA	Art Annex	1958	3290	78363
0606	JCMU	Loftin Hall - Conner Museum	1935	13111	78363

BUILDING NO.	BUILDING CODE	BUILDING NAME	YEAR BUILT	GROSS SQUARE FOOTAGE	ZIP CODE
0622		Perks Building	2010	3546	78363
0623	ATSB	Agricultural Mechanics Building	2009	18480	78363
0626	CUP1	Central Plant 1	1960	3728	78363
0627	CP1A	Central Plant 1 Annex	1961	2667	78363
0628	CUP2	Central Plant 2	1966	5985	78363
0630	VEHS	Vehicle Storage Bldg (Physical Plant)	1973	7500	78363
0631	PHYP	Physical Plant Building	1974	12800	78363
0632	PPSH	Physical Plant-Shop Building	1975	11301	78363
0635	MCGS	Maintenance Center III Garage-Storage	1983	12400	78363
0651	POLB	Pole Barn	1953	4000	78363
0654	UNGL	Alkek Ungulate Research Facility	2008	5203	78363
0655	PATL	Pathology Lab	2002	1261	78363
0656	AVBL	Aviary Building	2004	4643	78363
0657	WILD	Wild Life Center	2005	9768	78363
0658		Horse Pavilion	2010	1778	78363
0659		Feed Grain Barn	2010	964	78363
0660	PLMS	Plant Materials Center	1967	2516	78363
0662	SWBN	Swine Barn	1976	989	78363
0663	SHBN	Sheep Barn	1975	800	78363
0665	SWNU	Swine Nutrition Barn	1977	3900	78363
0666	BFHO	Beef Herdsman Office	2000	248	78363
0667	AISB	Artificial Insemination Lab	1977	936	78363
0668	NUBC	Nutrition (Cattle) Barn	1977	1033	78363
0669	FARR	Farrowing Building-Swine	1975	1500	78363
0670	FOMS	Farm Office & Machine Storage	1982	3800	78363
0671		Farm Animal Facility	2012	9434	78363
0678	WFMR	Farm Managers Residence Weslaco	1947	1894	78599
0679	WDIR	Directors Residence - Weslaco	1949	2264	78599
0680	WPTR	Chemical Storage - Weslaco	1951	228	78599
0681	WMS1	Machine Shed 1 Weslaco	1952	3000	78599
0682	WMS2	Machine Shed 2 Srf	1966	3000	78599
0683	WVSQ	Citrus Center Visitors Quarters	1996	3605	78599
0684		Citrus Center Building	2010	24422	78599
0685	WCRL	Classroom/Lab - Weslaco	1947	2546	78599
0687	WFSB	Fruit Sizing Building Srf	1969	4800	78599
0688	WMS3	Machine Shed 3 Weslaco	1969	4800	78599
0689	WPHB	Postharvest Building Weslaco	1982	8000	78599
0690	WILR	Insectary/Lunchroom Weslaco	1975	1732	78599
0691	WGH1	Greenhouse 1 Weslaco	1959	880	78599
0692	WGH2	Greenhouse 2 Weslaco	1972	880	78599
0693	WGH3	Greenhouse 3/Headhouse 2 Weslaco	1978	2948	78599
0694	WHH1	Headhouse 1 Weslaco	1971	660	78599
0695	WCST	Chemical Storage Weslaco	1979	2400	78599
0697	WPTG	Pathology Greenhouse	1996	2583	78599

BUILDING NO.	BUILDING CODE	BUILDING NAME	YEAR BUILT	GROSS SQUARE FOOTAGE	ZIP CODE
0698	WCLB	Citrus Center Laundry Building	1996	121	78599
0700	SSBL	Support Services	1970	6194	78363
0701	CRCA	Clement Rehabilitation Ctr./Athletic Dr. R.	1951	9732	78363
0702	ATHO	Athletic Offices Building	1964	3264	78363
0703	MESG	Mesquite Grove Bbq Building	1962	988	78363
0706	JVHO	Javelina House	1935	1659	78363
0707	JHCC	James H. Clement	2000	5940	78363
0724	RSFC	Student Recreation Center	2010	37348	78363
0725	MSUB	Memorial Student Union Building	1950	80161	78363
0726	BOOK	University Bookstore	1963	11726	78363
0740	UNIV	University Village	2009	211683	78363
0741	JSHC	Mesquite Village West: Home Of The Honors College	2011	104563	78363
0742		Javelina Dining Hall	2011	18745	78363
0745	LEWH	Lorine J. Lewis Hall	1956	60064	78363
0746	EKHL	Robert C. Eckhardt Hall	1956	34955	78363
0747	POTH	Ernest H. Poteet Hall	1960	71648	78363
0748	LYNC	John F. Lynch Hall	1963	47391	78363
0749	MART	J. C. Martin Hall	1966	87650	78363
0750	LSWC	Student Health & Wellness	1970	9142	78363
0752	TBHL	Turner-Bishop Hall	1971	163370	78363
0753		St. Aquinas Center	1981	4831	78363
0760	SFPB	Softball Field Press Box	1997	402	78363
0761	BBPB	Baseball Field Press Box	1998	400	78363
0762		Armstrong Station	1975	3861	78363
0763		Javelina Gift Shop	2012	1669	78363
0764		Ticket Booth 1	2012	80	78363
0765		Ticket Booth 2	2012	80	78363

RESIDENCE HALL OCCUPANCY

FIGURE 40. RESIDENCE HALL OCCUPANCY, FALL SEMESTERS 2011-2015

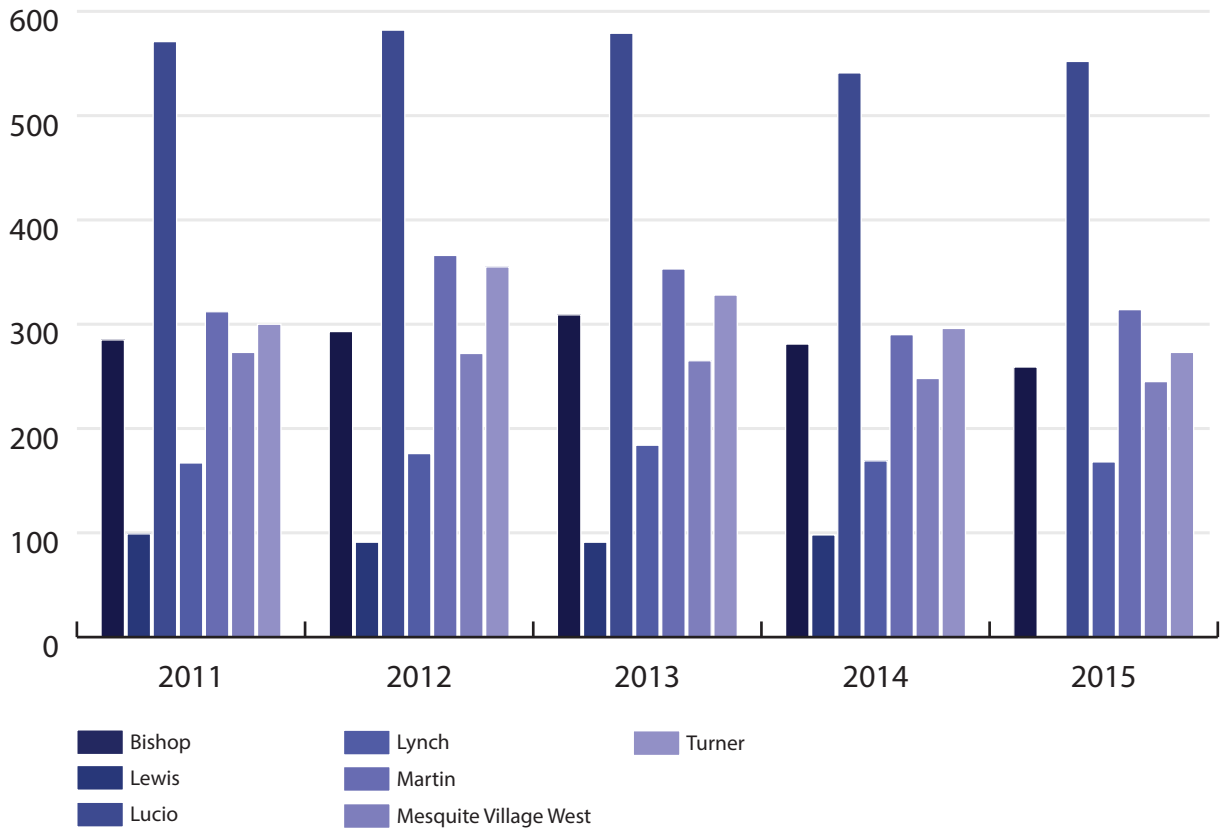
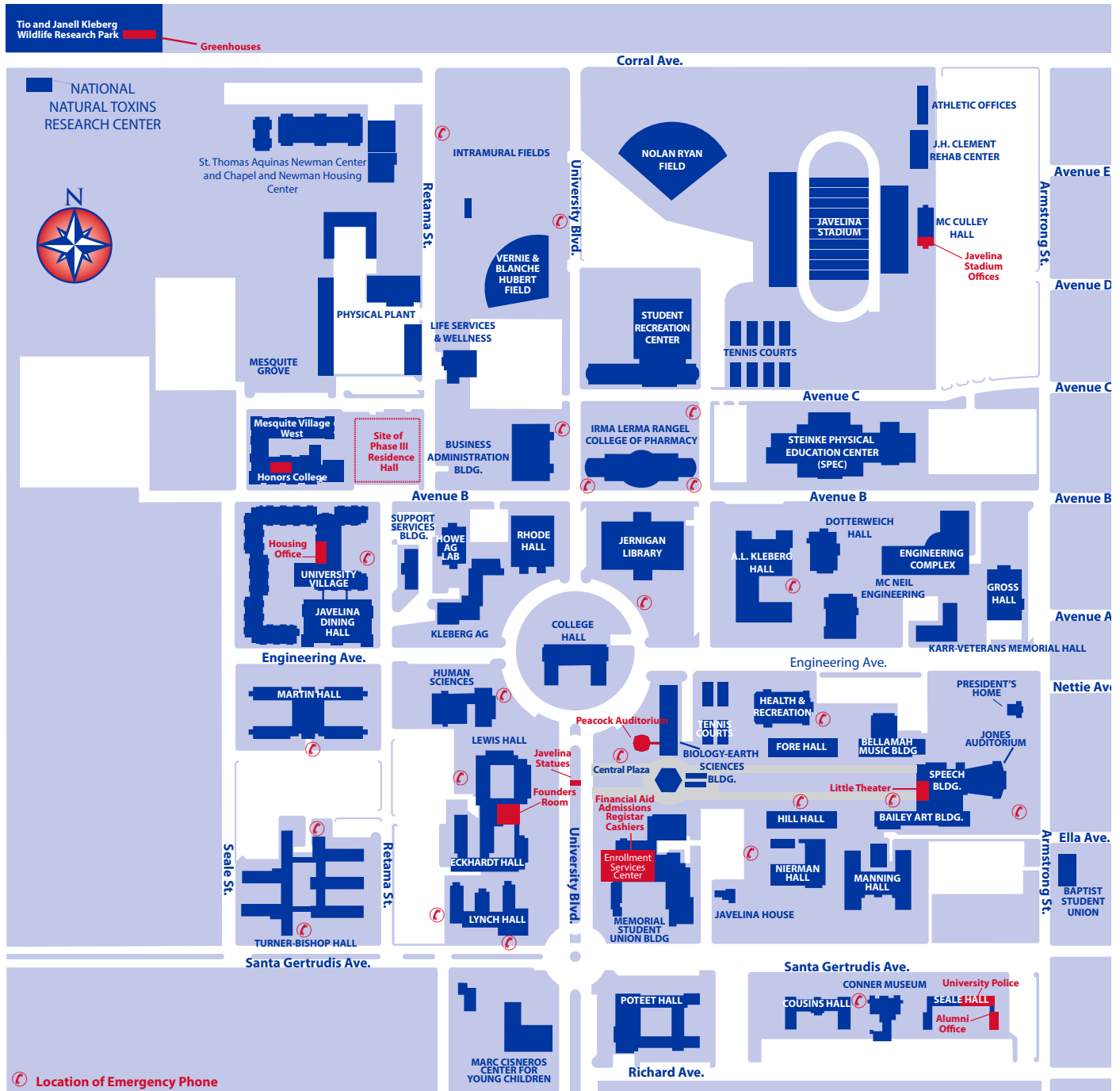
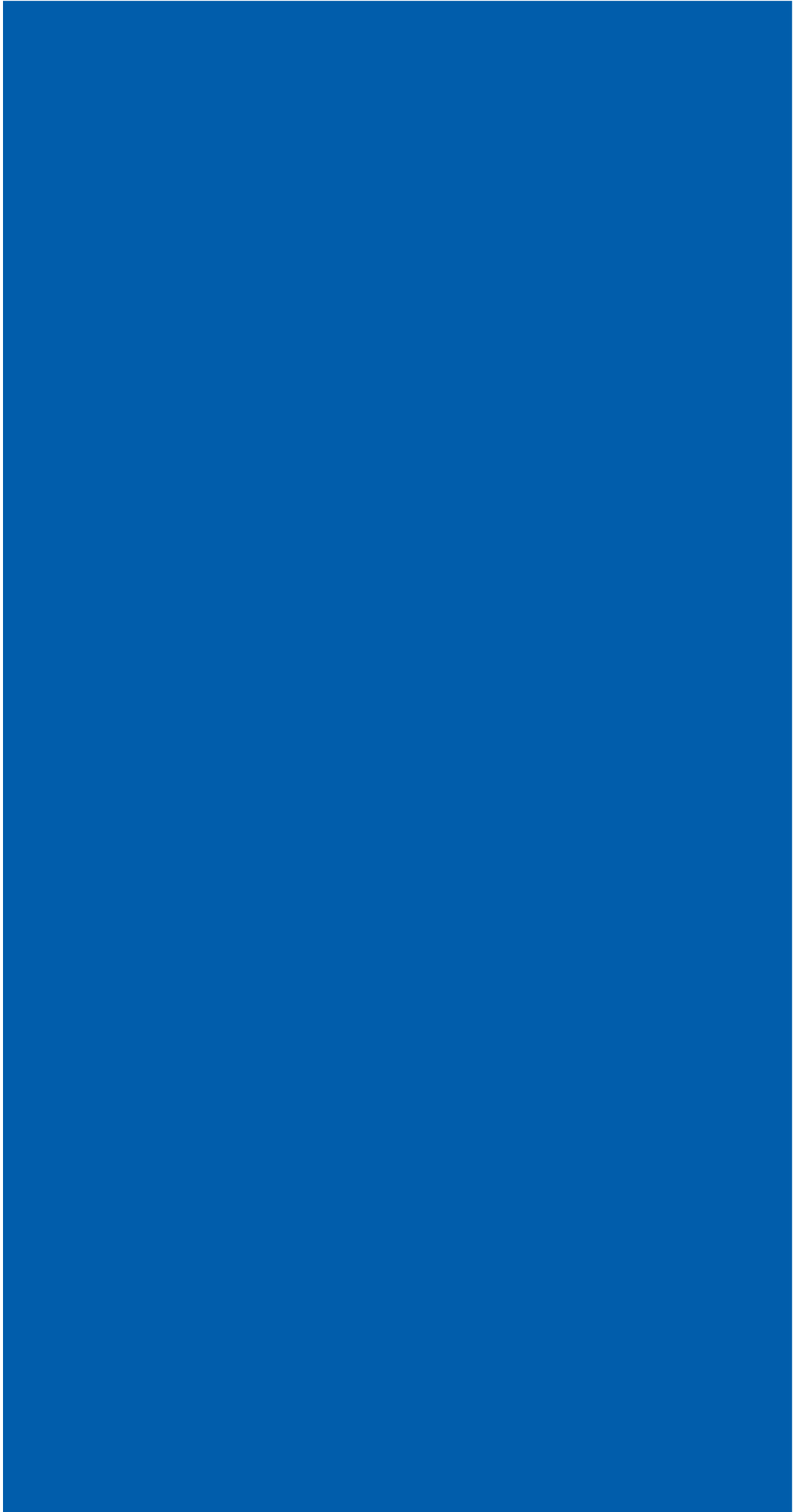


TABLE 44. RESIDENCE HALL OCCUPANCY, FALL SEMESTERS 2011-2015

HALL	FALL 2011	FALL 2012	FALL 2013	FALL 2014	FALL 2015
Bishop	285	293	309	281	259
Lewis	99	91	91	98	
Lucio (University Village)	571	582	579	541	552
Lynch	167	176	184	169	168
Martin	312	366	353	290	314
Mesquite Village West	273	272	265	248	245
Turner	300	355	328	296	273
Total	2,007	2,135	2,109	1,923	1,811

CAMPUS MAP





SECTION 5: APPENDIX



DATA REQUEST FORM

OFFICE OF INSTITUTIONAL RESEARCH INFORMATION SERVICE REQUEST

REQUESTER - Person to contact with questions or clarifications of request	
Name: _____	Date: _____
Department: _____	Box: _____
Phone: _____	Fax: _____
Email: _____	
Address: _____	
★ Signature: _____	
(required)	
All requests are subject to the Privacy Act of 1974.	

REQUEST - Please include any selection criteria, such as *classification = freshman*, as well as time period, such as *Fall 2009* or *academic year 2009-2010*. List the information needed, such as *Name, Student ID, GPA* or *Permanent Address*. Also describe the layout and grouping of information, such as *sorted by ethnicity*.

★ Description: _____

Please specify the purpose for the information you are requesting. For example: Departmental Assessment, List of Students for *Scholarship_Name*, Data for Proposal for *Grant_Name*, Information Needed by *Accreditation_Agency*, Survey Name performed by *External_Agency*.

★ Purpose: _____

Return By: Email Fax Call Mail Pick-up Due Date _____

FOR INTERNAL USE ONLY

Request ID: _____	Duration: _____ H _____ M
	Emergency <input type="checkbox"/>
Received By: _____	Date: _____
Processed By: _____	Date: _____
Entered By: _____	Date: _____
Checked By: _____	Date: _____
Referred To: _____	Date: _____
Priority: H <input type="checkbox"/> M <input type="checkbox"/> L <input type="checkbox"/>	

PLEASE ALLOW 3-5 BUSINESS DAYS FOR YOUR REQUEST TO BE COMPLETED
FAX: 361-593-4141

SURVEY

FACTBOOK SURVEY

Please take a few moments to complete this questionnaire and return it by mail to MSC 215 or fax it to (361) 593-4141, Office of Institutional Research and Strategic Planning. Your cooperation will assist us in improving the quality of the Fact book.

Please rate the usefulness of each section:

	Did not use	Not Useful	Somewhat Useful	Useful	Very Useful
1. The University	()	()	()	()	()
2. University Statistics	()	()	()	()	()
3. University First-time Students	()	()	()	()	()
4. University Faculty and Staff Information	()	()	()	()	()
5. Fiscal, Research, and Financial Aid	()	()	()	()	()
6. Facilities	()	()	()	()	()
7. Appendix	()	()	()	()	()

Please rate the quality of the following:

	Poor	Fair	Good	Excellent
1. Fonts	()	()	()	()
2. Graphics	()	()	()	()
3. Charts	()	()	()	()
4. Text	()	()	()	()
5. General Content	()	()	()	()
6. General Appearance	()	()	()	()

How often have you referred
Or plan to refer to the Factbook?

	Never	Seldom	Often	Frequently
	()	()	()	()

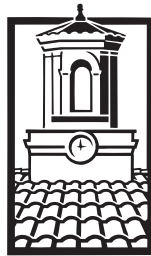
For which purpose(s) did you utilize the Factbook? Please select all that apply.

() Not utilized () Internal Reports () Recruitment () External Reports () General Information
() Grants Other _____

What is your classification?

() Department Chair () Faculty () Researcher () Administrator () Staff () Other

Feel free to include any comments or suggest any information to be included in the next edition.



TEXAS A&M
UNIVERSITY
KINGSVILLE

Office of Institutional Research & Assessment
MSC 215
College Hall Room 231
955 University Blvd.
Kingsville, TX 78363