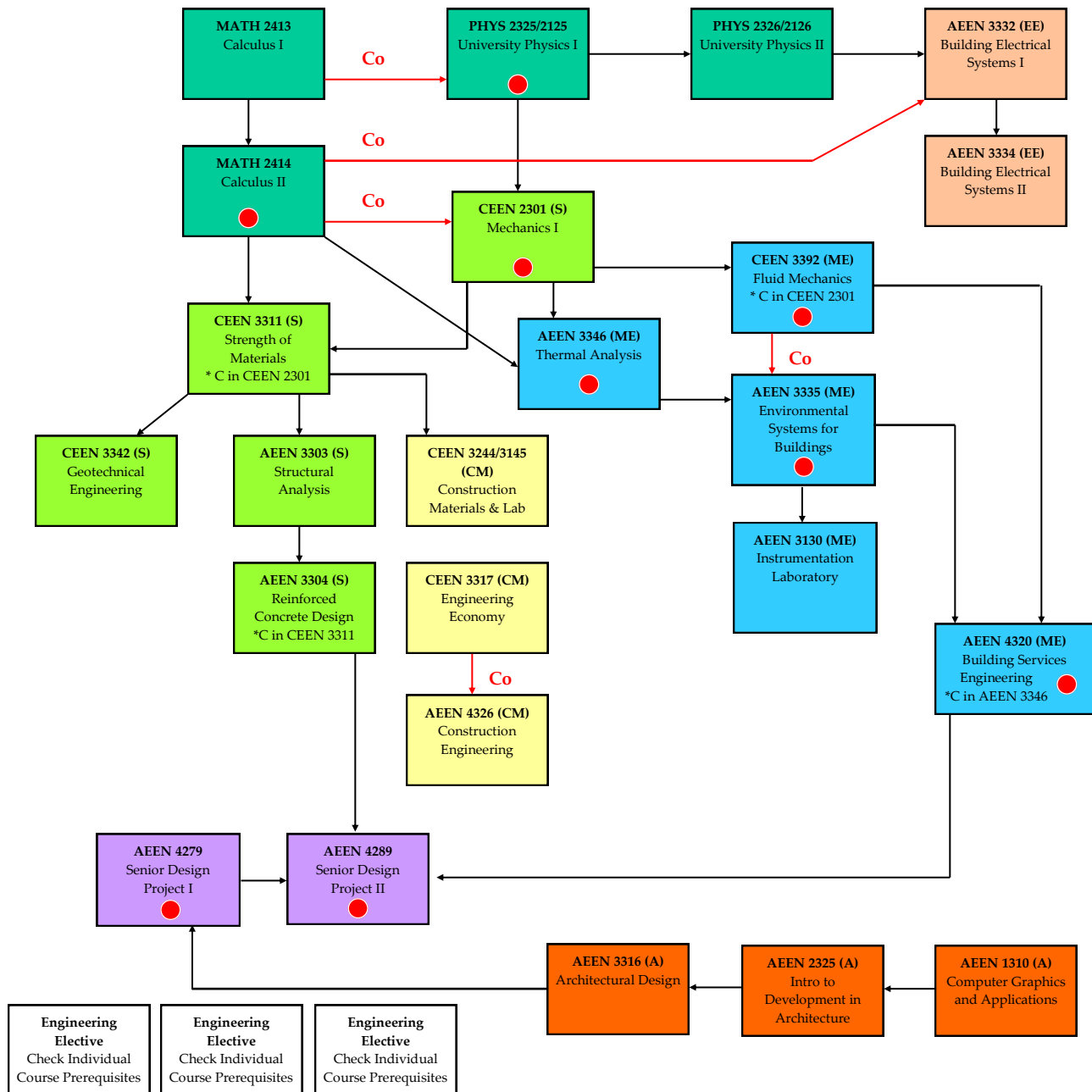


TAMUK Architectural Engineering Program 2023-2024 Catalog Prerequisite Flow Chart

Note: Most 3000 and 4000 level classes are offered only once per year.



Key:

Green Box (S designation) = Structural Engineering (15 hours without electives)

Blue Box (ME designation) = Mechanical Systems (13 hours without electives)

Brown Box (EE designation) = Electrical Systems (6 hours without electives)

Yellow Box (CM designation) = Construction Management (9 hours without electives)

Orange Box (A designation) = Architecture (9 hours without electives)

Purple Box = Capstone senior design sequence

Dark Green Box = Mathematics and Physics prerequisites

White Box = Engineering Elective (9 hours)

Boxes with Red Dot = Courses along Critical Path to Graduation

Black arrow = Prerequisite course sequence

Red arrow (Co designation) = Credit or registration course sequence

* Indicates a prerequisite minimum grade requirement