

ABOUT **THE PROGRAM**

The Master's professional degree offers individualized preparation for students who have completed undergraduate programs in special education or related areas. The program stresses field-based learning and experiences while offering ample opportunities to participate in teaching, research, and service.

SUPPLEMENTAL **CERTIFICATION**

Supplemental certification courses are available for currently certified teachers who wish to prepare for the State of Texas Examination, and Educational Diagnostician.



CONTACT **US**

Department of Teacher and Bilingual Education

Rhode Hall MSC 251

Texas A&M University-Kingsville

Kingsville, Texas 78363-8202

361-593-2871 or 361-593-4785

SCAN FOR MORE INFO



◆ ◆ ◆ ◆ ◆ ◆ ◆ ◆

Texas A&M University-Kingsville is accredited by the Commission on Colleges of the Southern Association of College and Schools (1866 Southern Lane, Decatur, GA 3033-4097; telephone number 404-679-4501) to award bachelor's, masters and doctoral degrees. Texas A&M University-Kingsville does not discriminate on the basis of race, color, national origin, sex, disability, age, or veteran's status in its program and activities. If you have questions concerning EO/AA/ADA, please contact the Office of Compliance at 361-593-4758



TEXAS A&M
UNIVERSITY
KINGSVILLE®

COLLEGE OF EDUCATION & HUMAN PERFORMANCE

TEXAS A&M UNIVERSITY-KINGSVILLE®



MASTER'S DEGREE IN SPECIAL EDUCATION (ONLINE)

EMPLOYMENT OPPORTUNITIES

According to the Bureau of Labor Statistics, “the number of special education teachers is expected to increase by 12% from 2018 to 2028, which is faster than the average of all occupations.”



REQUIRED COURSEWORK

A Master's Degree in Special Education requires 36 graduate hours.

EDSE 5304	Research in Special Education
EDSE 5313	Legislative, Litigation & Advocacy
EDSE 5320	Special Ed: Special Problems
EDSE 5360	Accommodating Diverse Populations in the Classroom
EDSE 5361	Educational Psychological Measurement
EDSE 5362	Classroom Organization & Management
EDSE 5364	Designing Instructional & Behavioral Programs
EDSE 5373	Development & Disability

(24 Core Courses)

M.ed. IN SPECIAL EDUCATION (3 credit hours)

EDRG 5372 Developmental Reading

OR

EDRG 5376 Special Problems in Reading

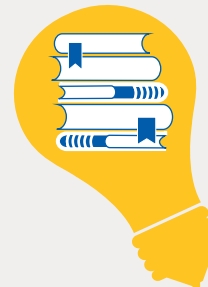
Supporting Field: (9 credit hours)

M.ed. IN SPECIAL EDUCATION WITH EDUCATIONAL DIAGNOSTICIAN CERTIFICATION

EDSE 5365 Adv. Practicum in Sp.Ed.
EDSE 5366 Individual Psychological & Education Testing

EDSE 5367 Assessment of Individuals with Severe Disabilities

EDSE 5370 Identification of the Young Child with Special Needs



HOW TO APPLY

Admission to the program is open to anyone who meets entrance requirements, regardless of ethnic background or national origin. Enrollment limitations are based exclusively on the availability of faculty and resources. In making admission decisions, the faculty engages in a comprehensive, systematic review of the applicant's academic proficiency and potential. Items examined in the review include but are not limited to, the following:

- Transcripts showing a bachelor's degree and a GPA of 2.8 or higher
- MAT or GRE scores
- Background consistent with the Texas Code of Conduct

Applications must be submitted at

www.applytexas.org