

SUPPLEMENTAL CERTIFICATION:

Supplemental certification courses are also available for currently certified teachers who wish to prepare for the State of Texas Examination.

EMPLOYMENT OPPORTUNITIES:

According to the Bureau of Labor Statistics, “the number of special education teachers is expected to increase by 17% from 2008 to 2018, which is faster than the average of all occupations.”



COLLEGE OF EDUCATION & HUMAN PERFORMANCE

TEXAS A&M UNIVERSITY-KINGSVILLE®

DEPARTMENT OF TEACHER AND BILINGUAL EDUCATION
MSC 196
700 University Blvd.
Kingsville, Texas 78363-8202

DR. PATRICIA HUSKIN
Phone: 361-593-4912
Fax : 361-593-3255
Email: Patricia.Huskin@tamuk.edu

College Scholarships

Many scholarships are available each year. More information can be found at www.tamuk.edu/finaid/sch_info/

◆ ◆ ◆ ◆ ◆ ◆ ◆ ◆ ◆ ◆

Texas A&M University-Kingsville is accredited by the Commission on Colleges of the Southern Association of College and Schools (1866 Southern Lane, Decatur, GA 3033-4097; telephone number 404-679-4501) to award bachelor's, masters and doctoral degrees. Texas A&M University-Kingsville does not discriminate on the basis of race, color, national origin, sex, disability, age, or veteran's status in its program and activities. If you have questions concerning EO/AA/ADA, please contact the Office of Compliance at 361-593-4758

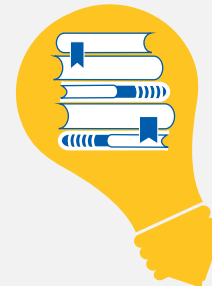


M.Ed. IN SPECIAL EDUCATION (ONLINE)

The M.Ed. professional degree offers individualized preparation for students who have completed undergraduate programs in special education or related areas. The program stresses field-based learning and experiences while offering ample opportunities to participate in teaching, research, and service.

Applications must be submitted at www.applytexas.org and include:

- ★ Transcripts showing a bachelor's degree and a GPA of 2.8 or higher
- ★ MAT or GRE scores
- ★ Background consistent with the Texas Code of Conduct
- ★ International students must include TOEFL scores



OUR PROGRAM

Total of 36 credit hours

- EDSE 5304** Research in Special Education
- EDSE 5313** Legislative, Litigation & Advocacy
- EDSE 5320** Special Ed: Special Problems
- EDSE 5360** Accommodating Diverse Populations in the Classroom
- EDSE 5361** Educational Psychological Measurement
- EDSE 5362** Classroom Organization & Management
- EDASE 5364** Designing Instructional & Behavioral Programs
- EDSE 5373** Development & Disability



REQUIRED COURSES FOR **M.Ed. IN SPECIAL EDUCATION** (3 credit hours):

EDRG 5372 Developmental Reading

OR

EDRG 5376 Special Problems in Reading
Supporting Field: (9 credit hours)

REQUIRED COURSES FOR **M.Ed. IN SPECIAL EDUCATION WITH EDUCATIONAL DIAGNOSTICIAN CERTIFICATION:**

- EDSE 5365** Adv. Practicum in Sp.Ed.
- EDSE 5366** Individual Psychological & Education Testing
- EDSE 5367** Assessment of Individuals with Severe Disabilities
- EDSE 5370** Identification of the Young Child with Special Needs

For more information: gradschool@tamuk.edu